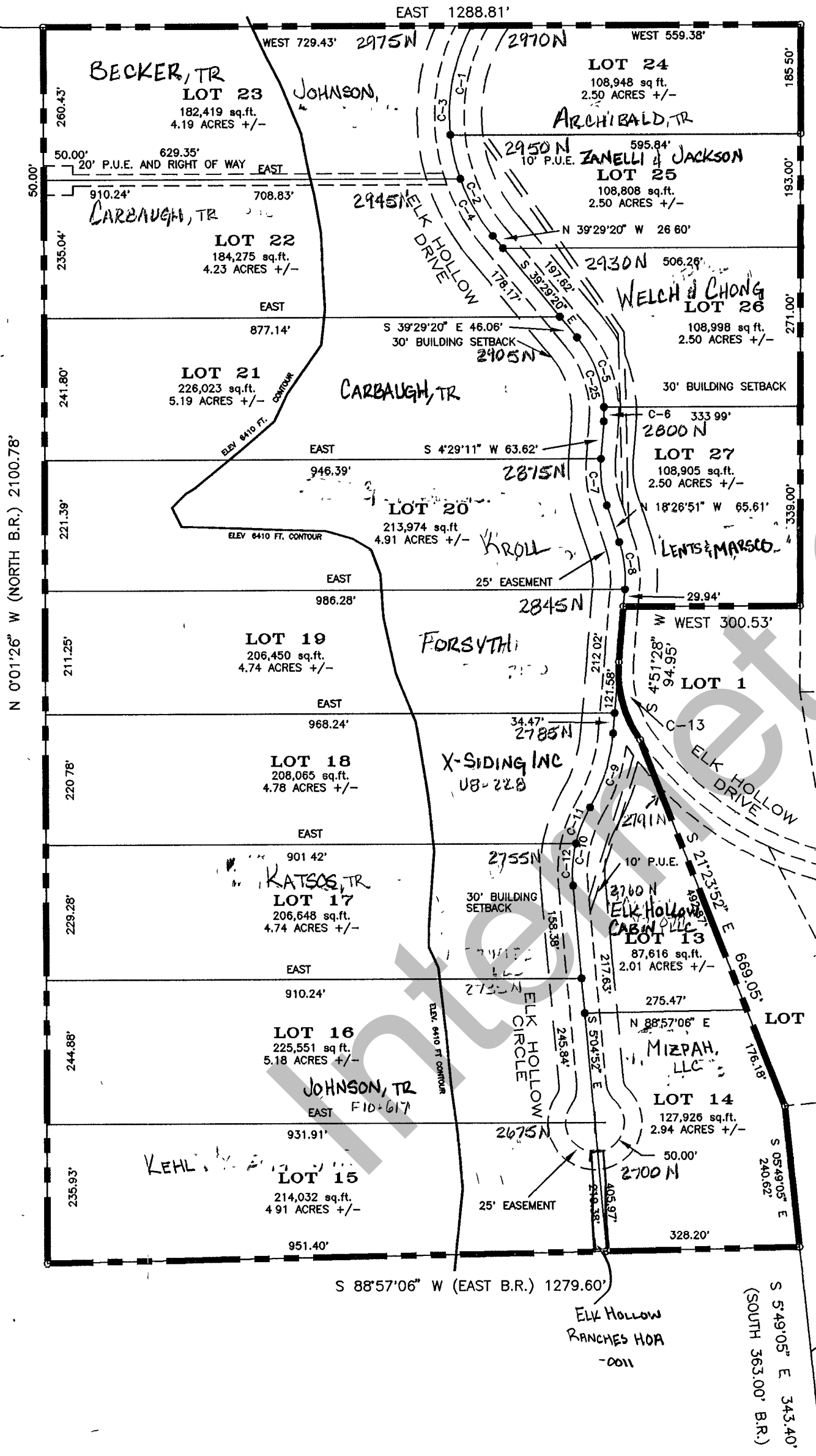


SCALE: 1 INCH = 200 FEET

IDAHO
 UTAH



CURVE	RADIUS	LENGTH	TANGENT	CHORD	BEARING	DELTA
C-1	321.85'	192.04'	98.97'	189.20'	S 11°20'59" W	34°11'09"
C-2	321.85'	189.56'	97.62'	186.84'	N 22°36'58" W	33°44'45"
C-3	321.85'	269.00'	142.92'	261.24'	N 04°29'57" E	47°53'14"
C-4	321.85'	112.60'	56.88'	112.02'	N 29°28'00" W	20°02'40"
C-5	200.00'	129.14'	66.91'	126.91'	N 20°59'27" W	36°59'46"
C-6	200.00'	24.36'	12.20'	24.35'	S 00°59'48" W	06°58'45"
C-7	200.00'	80.05'	40.57'	79.52'	N 06°58'50" W	22°56'01"
C-8	200.00'	81.35'	41.25'	80.79'	N 06°47'41" W	23°18'18"
C-9	300.00'	132.27'	67.23'	131.20'	S 17°29'19" W	25°15'41"
C-10	225.00'	138.23'	71.37'	136.07'	S 12°31'09" W	35°12'01"
C-11	225.00'	66.21'	33.35'	65.98'	N 21°41'19" E	16°51'41"
C-12	225.00'	72.02'	36.32'	71.71'	N 04°05'18" E	18°20'20"
C-13	200.00'	139.50'	72.72'	136.69'	N 15°07'25" W	39°57'46"
C-25	200.00'	153.50'	80.75'	149.76'	N 17°30'05" W	43°58'31"

S 0°14'24" W (SOUTH B.R.) 988.50'

ELK HOLLOW RANCHES
 PHASE 1

N 87°10'18" W 232.91'
 (WEST 232.00' B.R.)

S 89°13'49" E 1062.26' (EAST 1088.00' B.R.)

FOUND PILE OF STONES
 SOUTHEAST CORNER
 SECTION 31
 TOWNSHIP 15 NORTH
 RANGE 5 EAST
 SALT LAKE BASE AND MERIDIAN

46-31-020-Lots

REVISIONS	ELK HOLLOW RANCHES PHASE 2	SECTION 31 T. 15 N., R. 5 E. S.L.B. & M.	SCALE 1"=200'
-----------	-------------------------------	--	------------------