

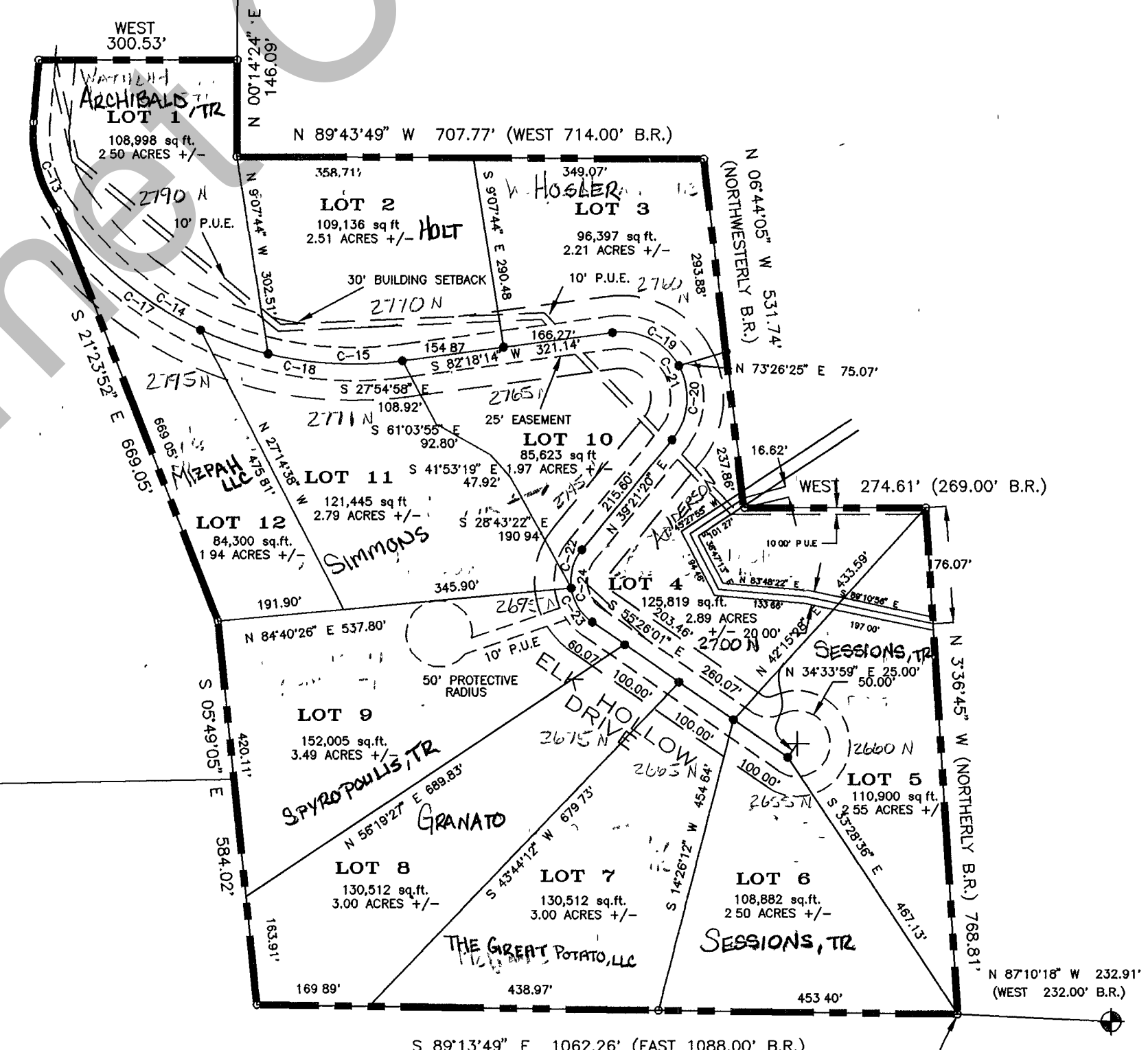
SCALE: 1 INCH = 200 FEET

IDAHO
 UTAH

CURVE	RADIUS	LENGTH	TANGENT	CHORD	BEARING	DELTA
C-1	321.85'	381.60'	216.81'	359.64'	S 05°31'23" E	67°55'54"
C-2	200.00'	153.50'	80.75'	149.76'	S 17°30'05" E	43°58'31"
C-3	200.00'	80.05'	40.57'	79.52'	N 06°58'50" W	22°56'01"
C-4	200.00'	81.35'	41.25'	80.79'	S 06°47'41" E	23°18'18"
C-9	300.00'	132.27'	67.23'	131.20'	S 17°29'19" W	25°15'41"
C-10	225.00'	138.23'	71.37'	136.07'	S 12°31'09" W	35°12'01"
C-13	200.00'	139.50'	72.72'	136.69'	N 15°07'25" W	39°57'46"
C-14	550.00'	396.06'	207.05'	387.55'	N 55°44'04" W	41°15'31"
C-15	550.00'	204.78'	103.59'	203.59'	N 87°01'48" W	21°19'56"
C-17	550.00'	286.79'	146.74'	283.55'	N 50°02'36" W	25°52'35"
C-18	550.00'	314.05'	161.43'	309.79'	N 81°20'20" W	32°42'53"
C-19	100.00'	119.60'	68.12'	112.60'	N 63°26'00" W	68°31'33"
C-20	100.00'	119.60'	68.12'	112.60'	N 05°05'33" E	68°31'33"
C-21	100.00'	239.20'	254.20'	186.12'	N 29°10'13" W	137°03'06"
C-22	75.00'	62.04'	32.92'	60.29'	N 15°39'30" E	47°23'40"
C-23	75.00'	62.04'	32.92'	60.29'	S 31°44'11" E	47°23'40"
C-24	75.00'	124.08'	81.55'	110.40'	S 08°02'21" E	94°47'21"

FUTURE DEVELOPMENT

ELK HOLLOW
 CIRCLE



46-31-010-Lots

REVISIONS	ELK HOLLOW RANCHES PHASE 1 AMND.	SECTION 31 T. 15 N., R. 5 E. S.L.B.& M.	SCALE
			1" = 200'