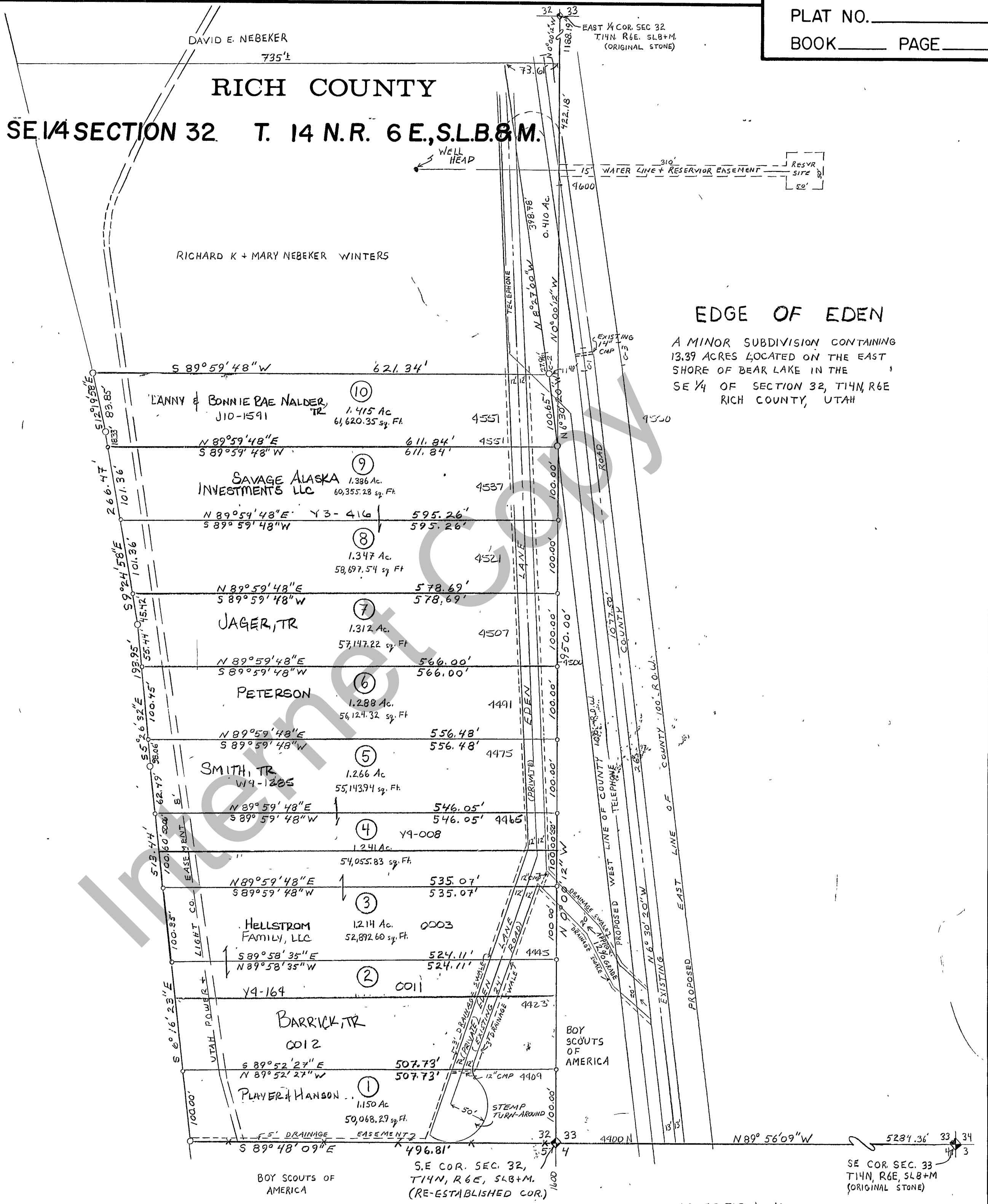


RICH COUNTY  
 SE 1/4 SECTION 32 T. 14 N. R. 6 E., S.L.B. & M.

EDGE OF EDEN

A MINOR SUBDIVISION CONTAINING  
 13.39 ACRES LOCATED ON THE EAST  
 SHORE OF BEAR LAKE IN THE  
 SE 1/4 OF SECTION 32, T14N, R6E  
 RICH COUNTY, UTAH

BEAR LAKE



REVISIONS			EDGE OF EDEN	Section 32 T. 14 R. 6 E		book	page

42-32-210-1013

SE COR. SEC. 33  
 T14N, R6E, SLB+M  
 (ORIGINAL STONE)

BOY SCOUTS OF AMERICA

S.E. COR. SEC. 32,  
 T14N, R6E, SLB+M.  
 (RE-ESTABLISHED COR.)