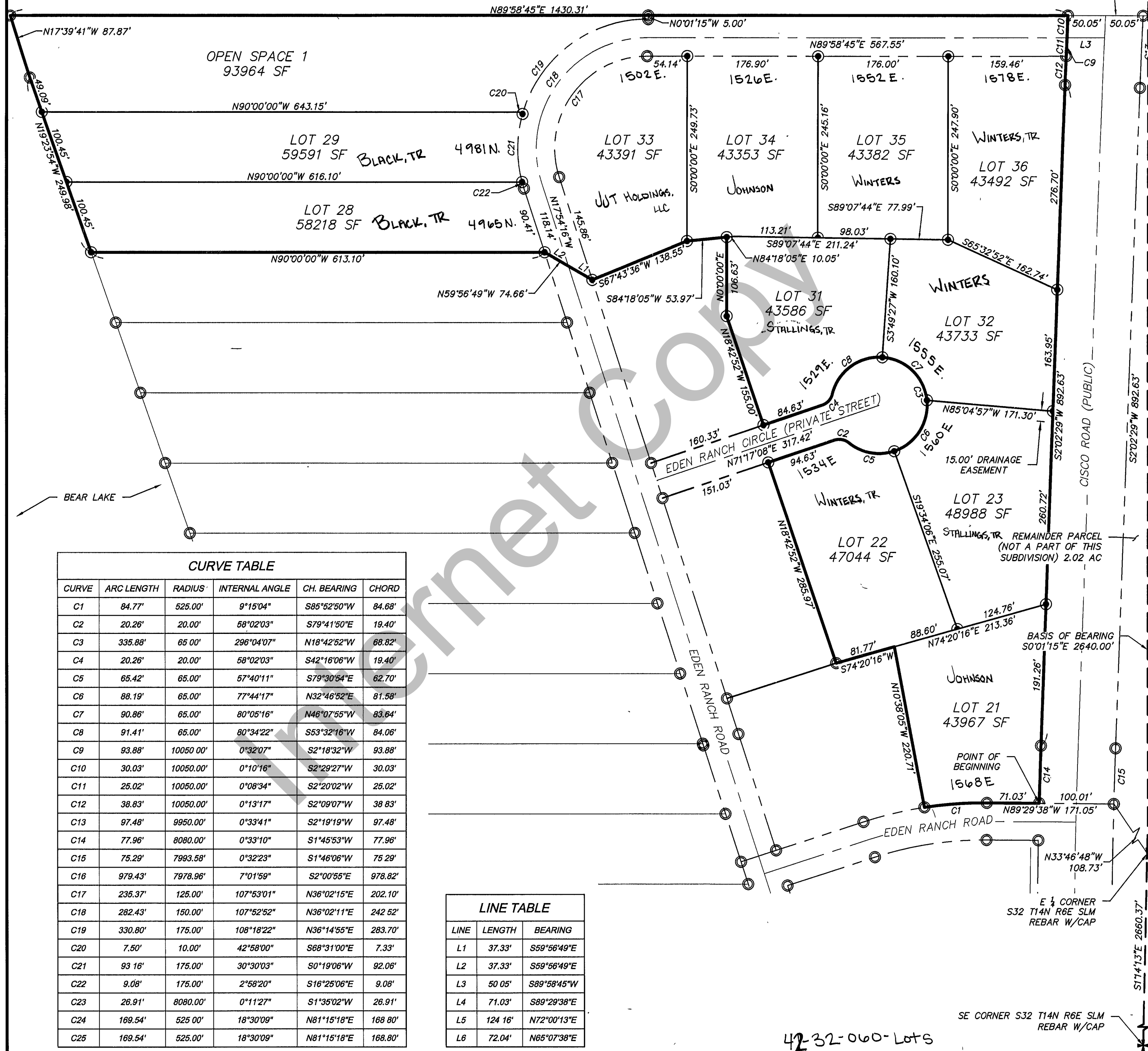


RICH COUNTY, UTAH

PLAT NO. _____
BOOK _____ PAGE _____

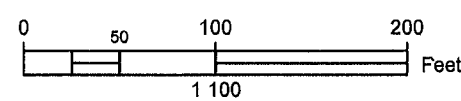


CURVE TABLE

CURVE	ARC LENGTH	RADIUS	INTERNAL ANGLE	CH. BEARING	CHORD
C1	84.77'	525.00'	9°15'04"	S85°52'50"W	84.68'
C2	20.26'	20.00'	58°02'03"	S79°41'50"E	19.40'
C3	335.88'	65.00'	296°04'07"	N18°42'52"W	68.82'
C4	20.26'	20.00'	58°02'03"	S42°16'06"W	19.40'
C5	65.42'	65.00'	57°40'11"	S79°30'54"E	62.70'
C6	88.19'	65.00'	77°44'17"	N32°46'52"E	81.58'
C7	90.86'	65.00'	80°05'16"	N46°07'55"W	83.64'
C8	91.41'	65.00'	80°34'22"	S53°32'16"W	84.06'
C9	93.88'	10050.00'	0°32'07"	S2°18'32"W	93.88'
C10	30.03'	10050.00'	0°10'16"	S2°29'27"W	30.03'
C11	25.02'	10050.00'	0°08'34"	S2°20'02"W	25.02'
C12	38.83'	10050.00'	0°13'17"	S2°09'07"W	38.83'
C13	97.48'	9950.00'	0°33'41"	S2°19'19"W	97.48'
C14	77.96'	8080.00'	0°33'10"	S1°45'53"W	77.96'
C15	75.29'	7993.58'	0°32'23"	S1°46'06"W	75.29'
C16	979.43'	7978.96'	7°01'59"	S2°00'55"E	978.82'
C17	235.37'	125.00'	107°53'01"	N36°02'15"E	202.10'
C18	282.43'	150.00'	107°52'52"	N36°02'11"E	242.52'
C19	330.80'	175.00'	108°18'22"	N36°14'55"E	283.70'
C20	7.50'	10.00'	42°58'00"	S68°31'00"E	7.33'
C21	93.16'	175.00'	30°30'03"	S0°19'06"W	92.06'
C22	9.08'	175.00'	2°58'20"	S16°25'06"E	9.08'
C23	26.91'	8080.00'	0°11'27"	S1°35'02"W	26.91'
C24	169.54'	525.00'	18°30'09"	N81°15'18"E	168.80'
C25	169.54'	525.00'	18°30'09"	N81°15'18"E	168.80'

LINE TABLE

LINE	LENGTH	BEARING
L1	37.33'	S59°56'49"E
L2	37.33'	S59°56'49"E
L3	50.05'	S89°58'45"W
L4	71.03'	S89°29'38"E
L5	124.16'	N72°00'13"E
L6	72.04'	N65°07'38"E



REVISION No. _____
DATE: _____

EDEN RANCH PHASE 4

SECTION 32
T. 14 N R. 6 E

BOOK _____ PAGE _____
SCALE: 1"=100'

42-32-060-Lots