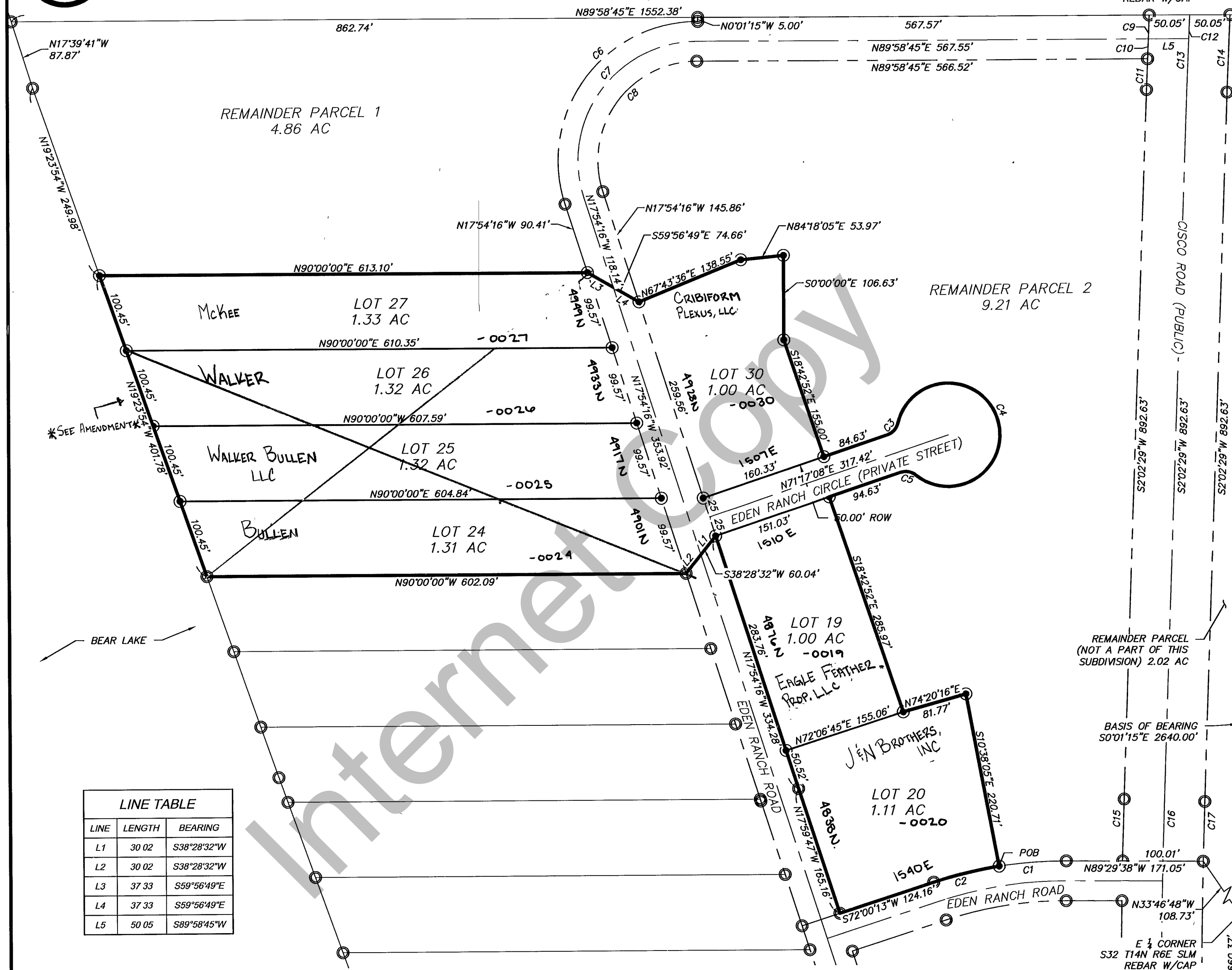


RICH COUNTY, UTAH

PLAT NO. _____
 BOOK _____ PAGE _____



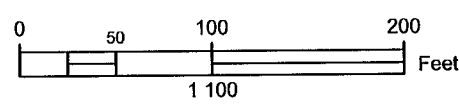
SEE AMENDMENT

LINE TABLE		
LINE	LENGTH	BEARING
L1	30.02	S38°28'32"W
L2	30.02	S38°28'32"W
L3	37.33	S59°56'49"E
L4	37.33	S59°56'49"E
L5	50.05	S89°58'45"W

CURVE TABLE					
CURVE	ARC LENGTH	RADIUS	INTERNAL ANGLE	CH BEARING	CHORD
C1	84.77'	525.00'	9°15'04"	S85°52'50"W	84.68'
C2	84.77'	525.00'	9°15'04"	S76°37'45"W	84.68'
C3	20.26'	20.00'	58°02'03"	N42°16'06"E	19.40'
C4	335.88'	65.00'	296°04'07"	S18°42'52"E	68.82'
C5	20.26'	20.00'	58°02'03"	N79°41'50"W	19.40'
C6	330.80'	175.00'	108°18'22"	N36°14'55"E	283.70'

CURVE TABLE					
CURVE	ARC LENGTH	RADIUS	INTERNAL ANGLE	CH BEARING	CHORD
C7	282.43'	150.00'	107°52'52"	N36°02'11"E	242.52'
C8	235.37'	125.00'	107°53'01"	N36°02'15"E	202.10'
C9	30.03'	10050.00'	0°10'16"	N2°29'27"E	30.03'
C10	25.02'	10050.00'	0°08'34"	N2°20'02"E	25.02'
C11	93.88'	10050.00'	0°32'07"	S2°18'32"W	93.88'
C12	30.03'	10000.00'	0°10'19"	N2°30'12"E	30.03'

CURVE TABLE					
CURVE	ARC LENGTH	RADIUS	INTERNAL ANGLE	CH BEARING	CHORD
C13	65.65'	10000.00'	0°22'34"	N2°13'46"E	65.65'
C14	97.48'	9950.00'	0°33'41"	S2°19'19"W	97.48'
C15	77.96'	8080.00'	0°33'10"	S1°45'53"W	77.96'
C16	76.62'	8030.00'	0°32'48"	S1°46'05"W	76.62'
C17	1054.72'	7980.00'	7°34'22"	S1°44'42"E	1053.96'



REVISION No. _____
 DATE: _____

EDEN RANCH PHASE 3

SECTION 32
 T. 14 N R. 6 E

BOOK _____ PAGE _____
 SCALE: 1"=100'

42-32-050-Lots

SE CORNER S32 T14N R6E SLM REBAR W/CAP