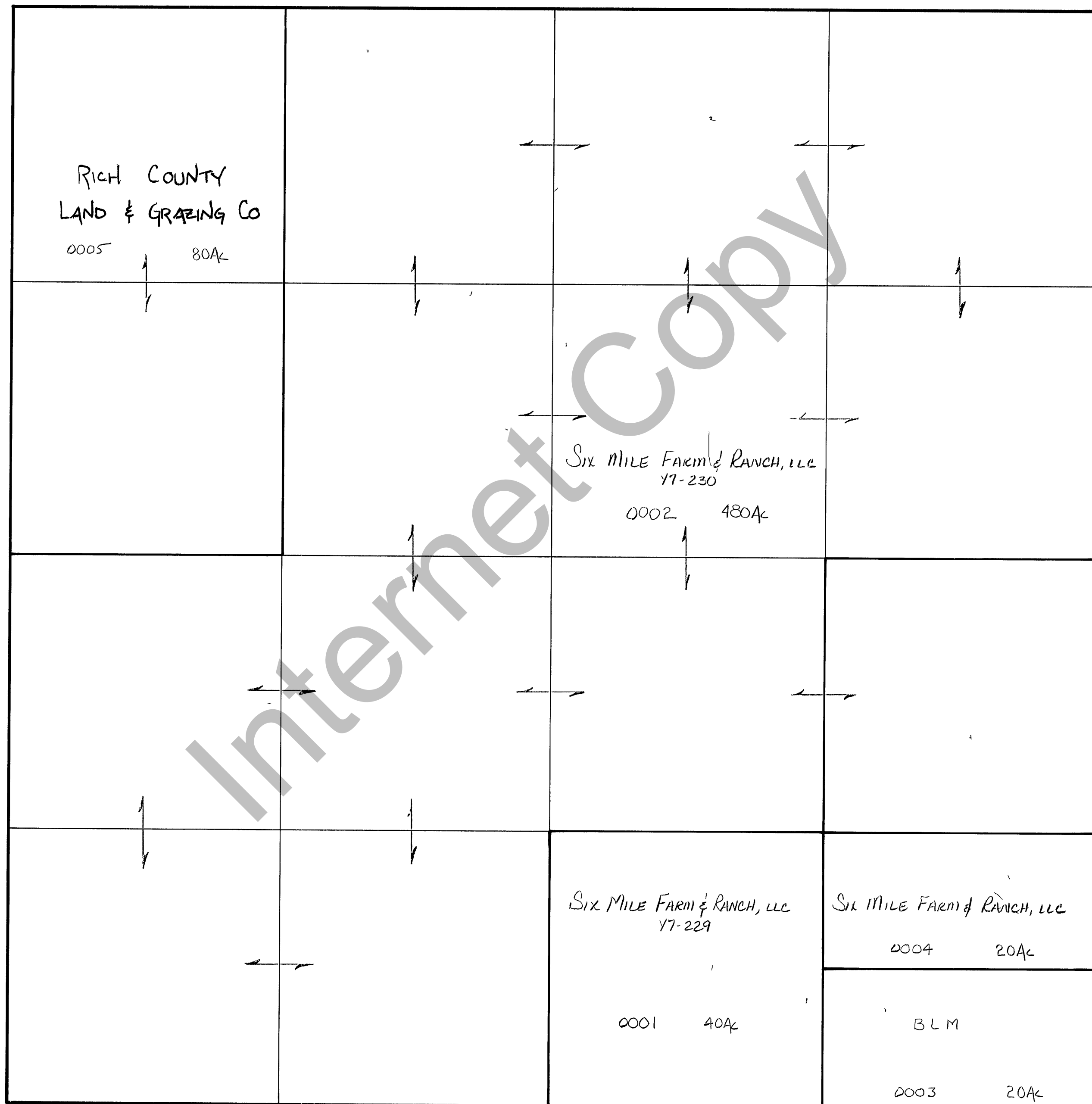


RICH COUNTY
SECTION 27, T. 13 N. R. 7 E., S.L.B. & M.

SERIAL NO = 38-27-000-PARCEL



REVISIONS	

THIS PLAT IS MADE SOLELY FOR THE PURPOSE OF ASSISTING IN LOCATING THE LAND, AND THE RECORDER ASSUMES NO LIABILITY FOR VARIATIONS, IF ANY, WITH AN ACTUAL SURVEY.

Section 27 T 13 N. R. 7E.

book page

drawn by DW date 12-79

scale 1" = 400'