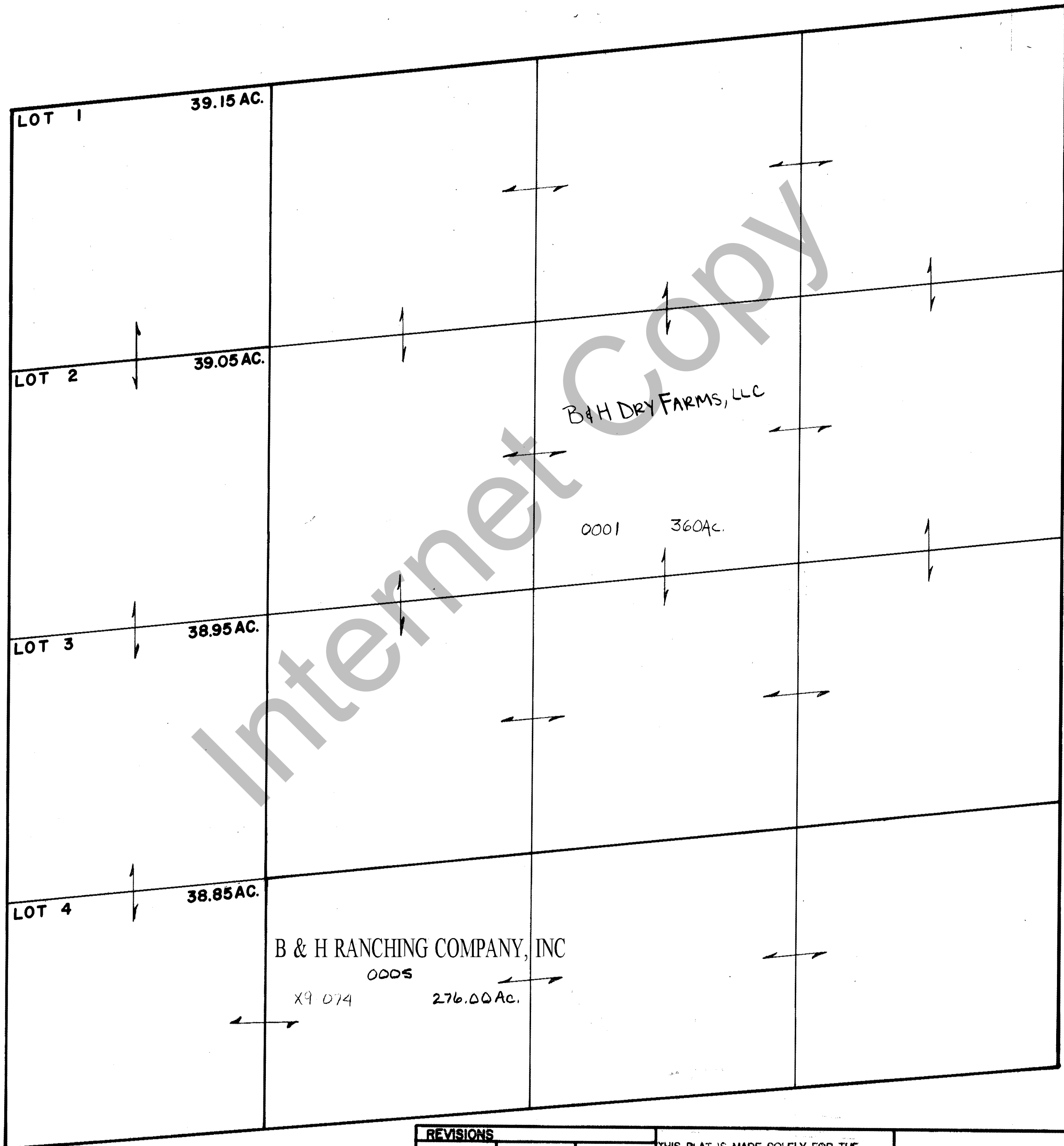


RICH COUNTY  
 SECTION 7, T. 13 N. R. 7 E., S.L.B. & M.

SERIAL NO. = 38-07-000-PARCEL



Internet Copy

REVISIONS	

THIS PLAT IS MADE SOLELY FOR THE PURPOSE OF ASSISTING IN LOCATING THE LAND, AND THE RECORDER ASSUMES NO LIABILITY FOR VARIATIONS, IF ANY, WITH AN ACTUAL SURVEY.

Section 7 T. 13 N. R. 7E book page  
 drawn by DW date 12-79 scale 1" = 400'