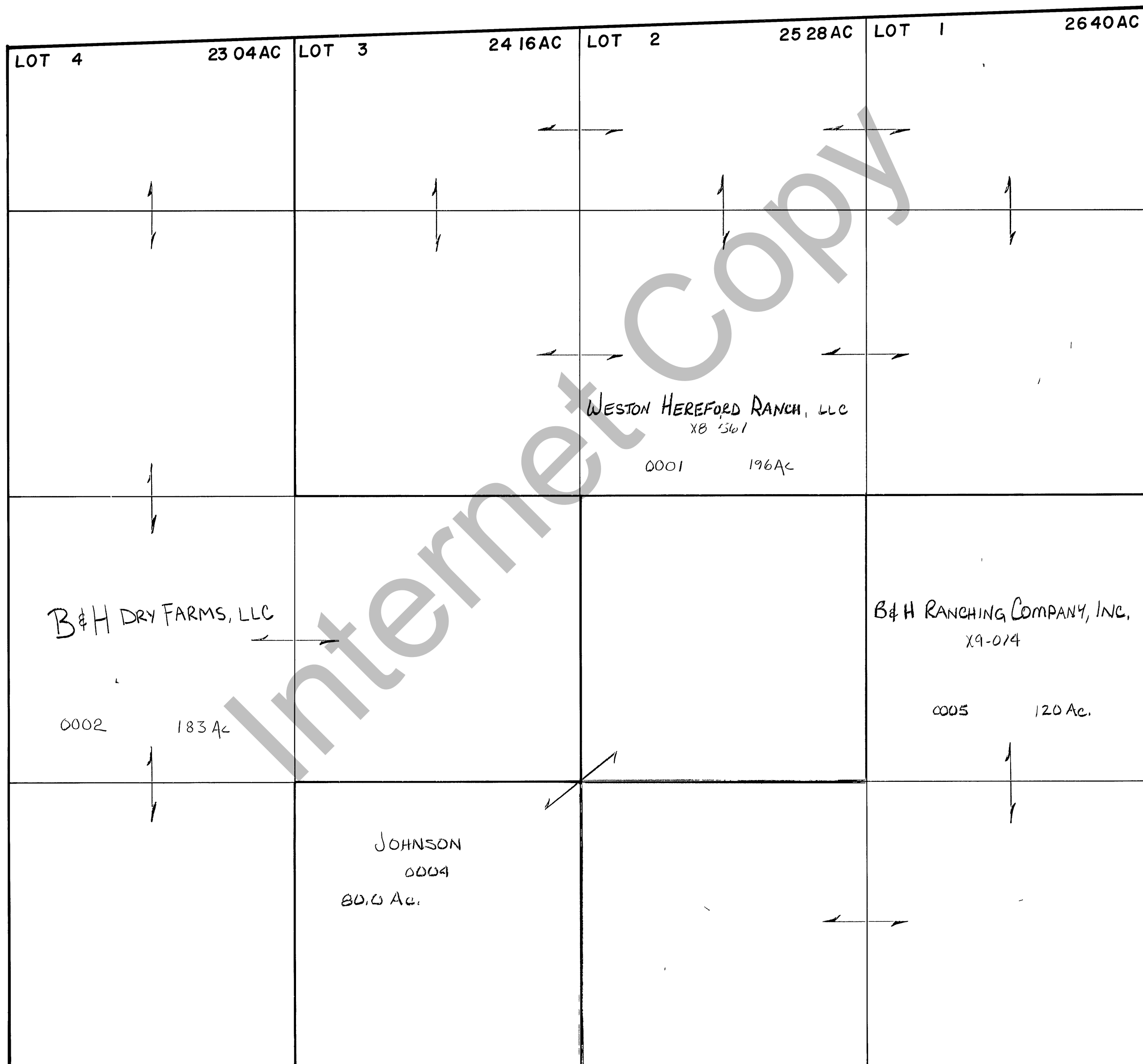


RICH COUNTY
SECTION 5, T. 13 N. R. 7 E., S.L.B. & M.

SERIAL NO = 38-05-000-PARCEL



REVISIONS		

THIS PLAT IS MADE SOLELY FOR THE PURPOSE OF ASSISTING IN LOCATING THE LAND, AND THE RECORDER ASSUMES NO LIABILITY FOR VARIATIONS, IF ANY, WITH AN ACTUAL SURVEY

Section 5 T 13 N. R 7 E.
drawn by DW date 12-79

book page
scale 1" = 400'