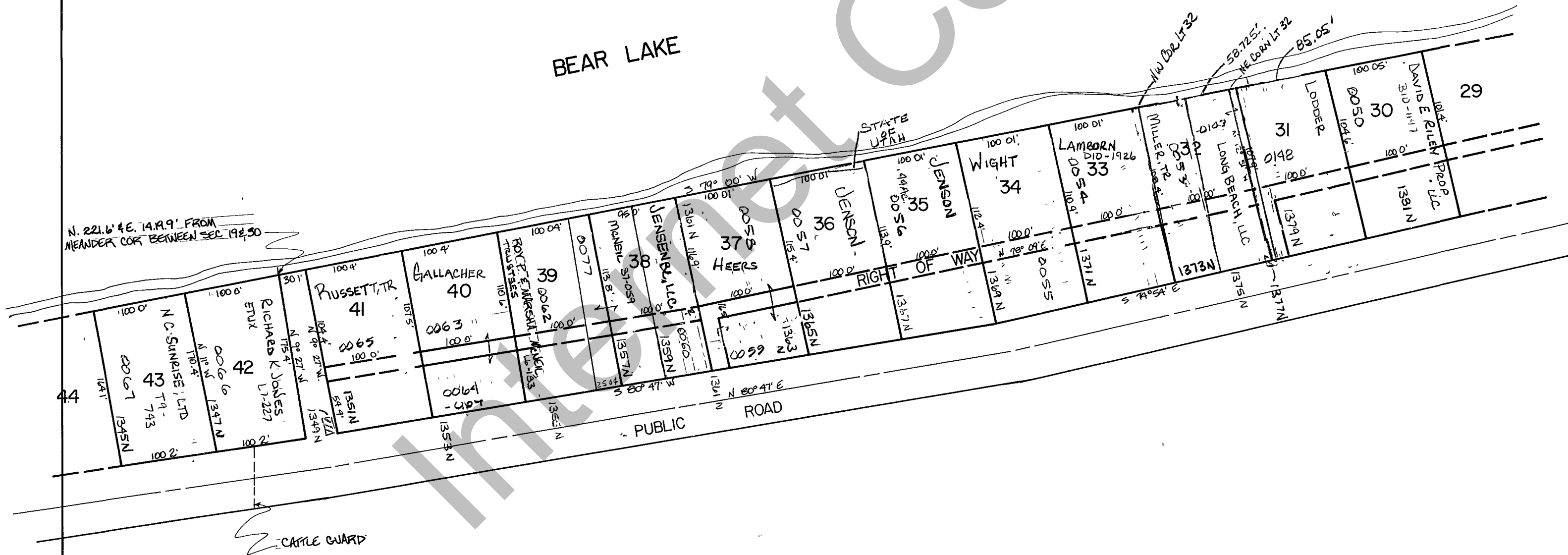


RICH COUNTY  
PART OF SEC. 19 & 20, T. 13 N., R. 6 E., S. L. B. & M.

BEAR LAKE



N. 221.6' & E. 14.99' FROM MEANDER COR. BETWEEN SEC. 19 & 20

SERIAL No: 37-19-010-PARCEL

REVISIONS			SIDDOWAY SUBDIVISION	Section 19, 20, T. 13 N., R. 6 E.	book page
				drawn by L.M.	date JAN. 79