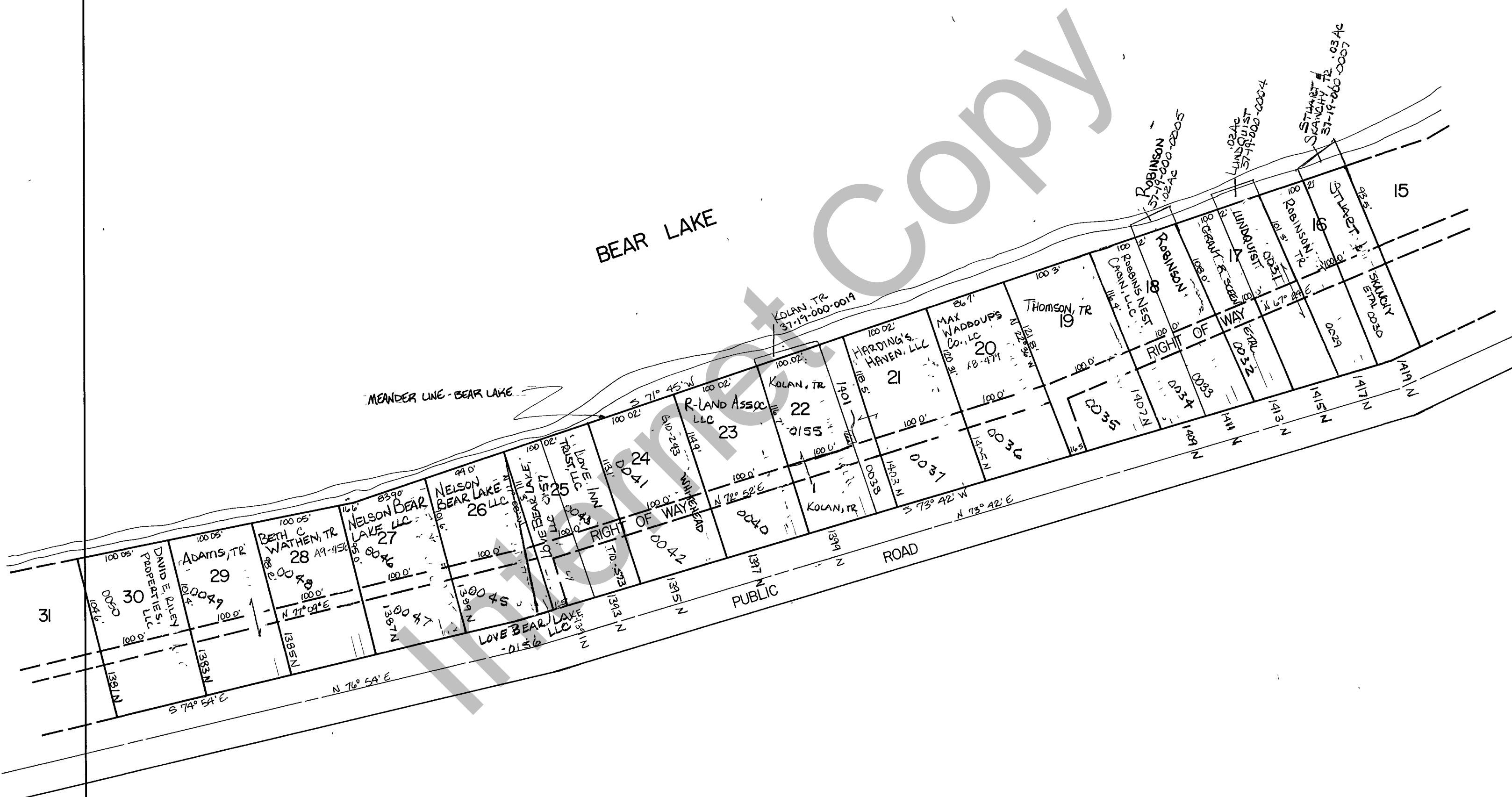


RICH COUNTY  
PART OF SEC. 19 & 20, T. 13N., R. 6E., S.L.B. & M.



SERIAL No = 37-19-010 PARCEL

REVISIONS			SIDDOWAY SUBDIVISION	Section 19, 20, T. 13N. R. 6E.	
					book
				drawn by L.M.	date JAN 79
					scale 1" = 100'