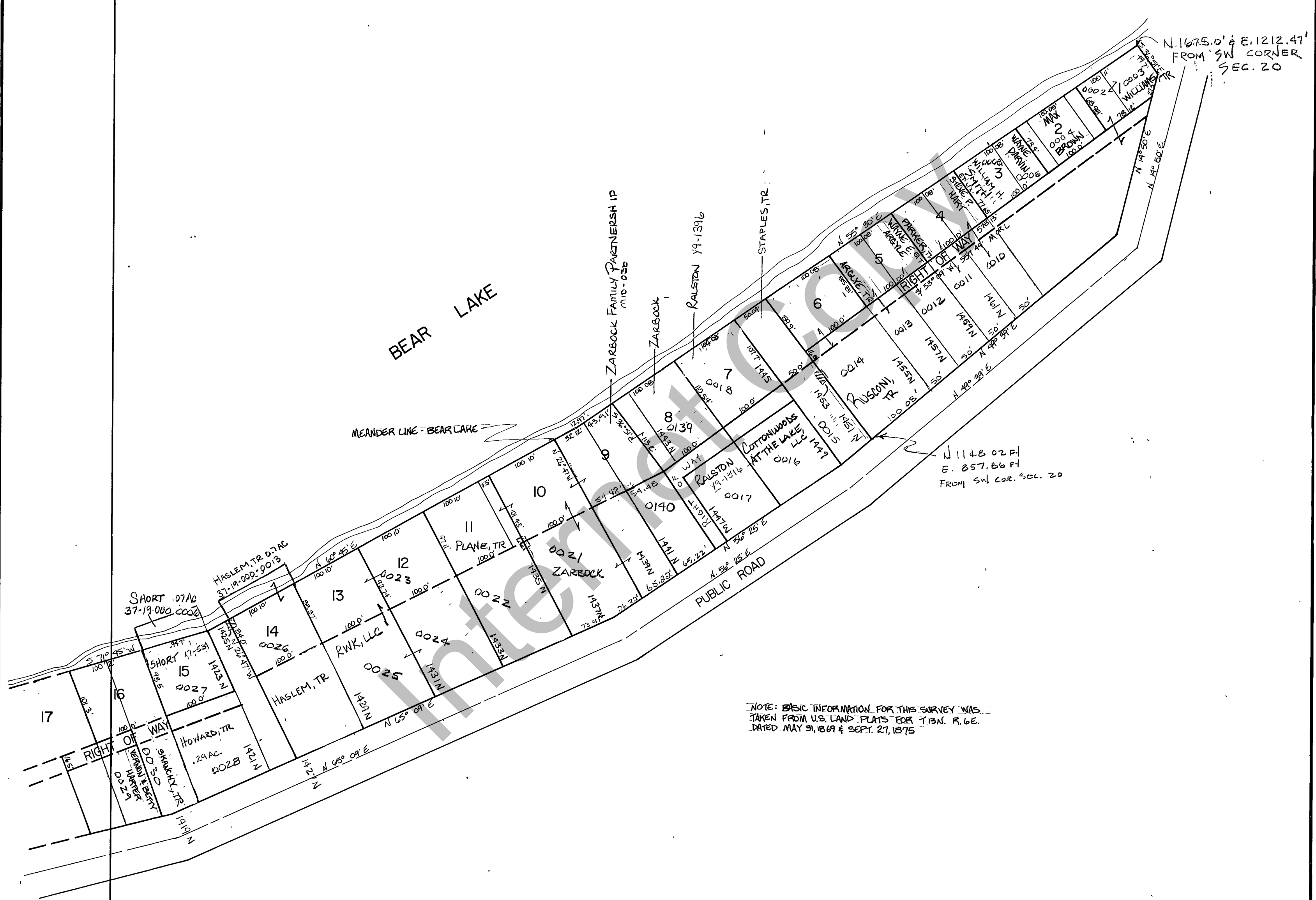


RICH COUNTY

PART OF SEC.19&20,T.13N.,R.6E.,S.L.B.&M.



NOTE: BASIC INFORMATION FOR THIS SURVEY WAS TAKEN FROM U.S. LAND PLATS FOR T.13N., R.6E., DATED MAY 31, 1869 & SEPT. 27, 1875

SERIAL NO: 37-19-010-PARCEL

REVISIONS	

SIDDOWAY SUBDIVISION

Section 19, 20, T.13N., R. 6E.		book	page
drawn by L.M.	date JAN. 79		
		scale 1"=100'	