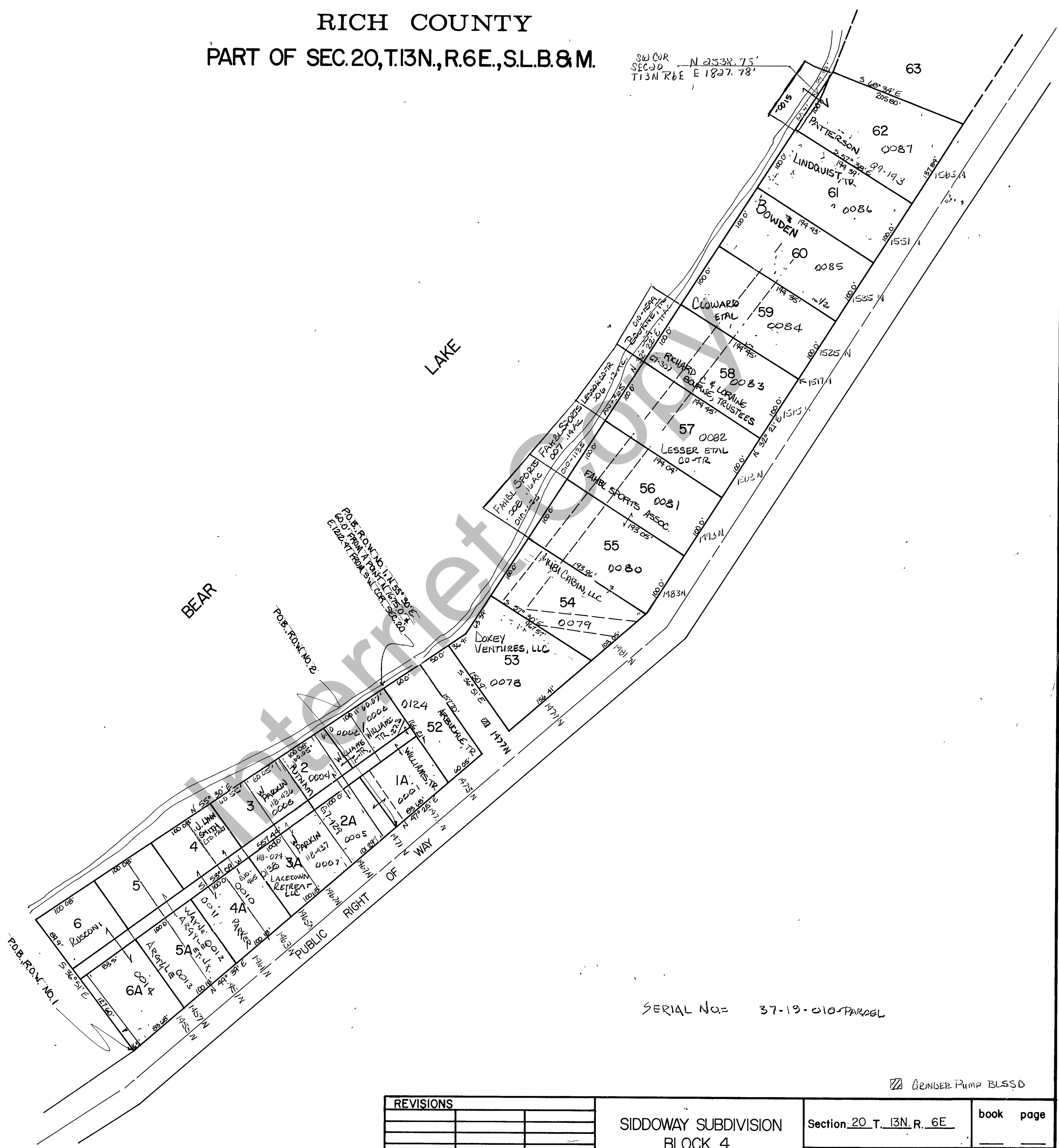


RICH COUNTY
PART OF SEC. 20, T. 13N., R. 6E., S. 1B. & M.



SW COR SEC 20 T13N R6E N 2538.75' E 1827.78'

P.O.B. ROW NO. 1 N 155° 30' E 60.0' FROM A POINT 11.6750' + E 120.2' FROM S.W. COR. SEC. 20.

P.O.B. ROW NO. 2

P.O.B. ROW NO. 1

SERIAL No. = 37-19-010-PARCEL

GRINDER PUMP BLES'D

REVISIONS	

SIDDOWAY SUBDIVISION
BLOCK 4

Section 20 T. 13N. R. 6E

book page

drawn by L.M.

date JAN. 79

scale 1" = 100'