

RICH COUNTY
 PART OF SEC. 20, T. 13N., R. 6E., S. L.B. & M.

P.O.B., R.O.W. NO. 8 N. 3921.74'
 + E. 2160.68' FROM S.W. COR. SEC. 20

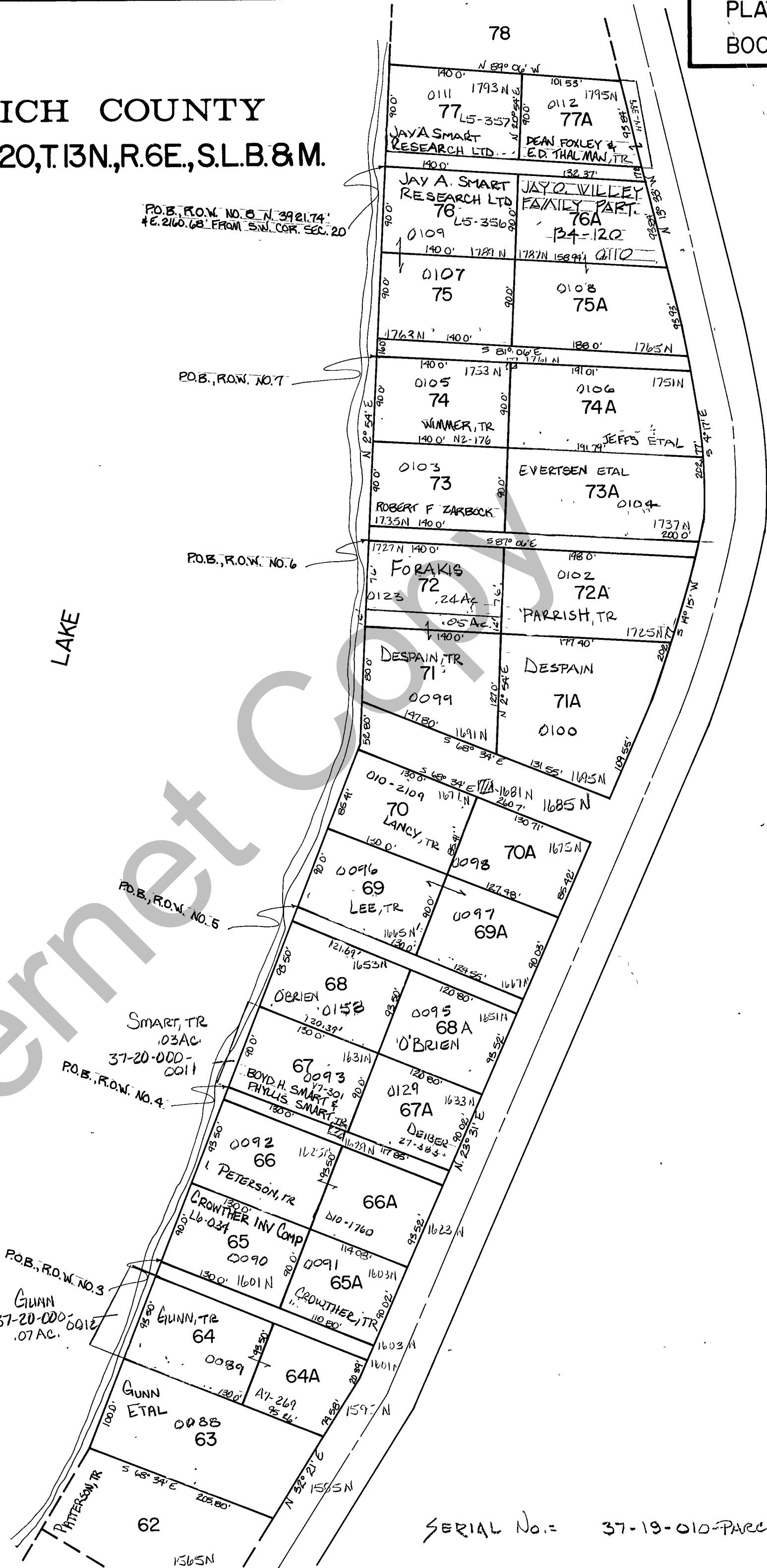
P.O.B., R.O.W. NO. 7

P.O.B., R.O.W. NO. 6

P.O.B., R.O.W. NO. 5

SMART, TR
 0.3 AC.
 37-20-000-0011
 P.O.B., R.O.W. NO. 4

P.O.B., R.O.W. NO. 3
 GUNN
 37-20-000-0012
 0.7 AC.



SERIAL No. = 37-19-010-PARCEL

REVISIONS			SIDDOWAY SUBDIVISION BLOCK 4	Section 20 T. 13N. R. 6E.	
				drawn by L.M.	date JAN. 79
					scale 1" = 100'