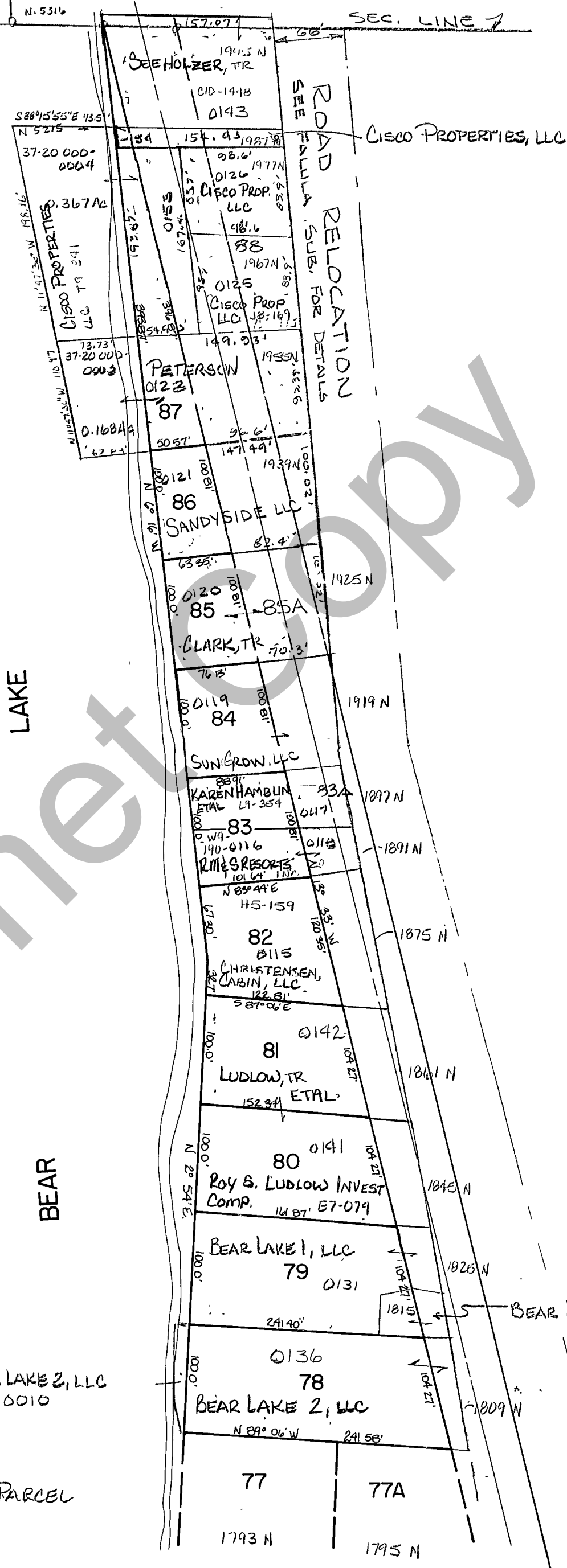


RICH COUNTY PART OF SEC. 20, T.13N., R.6E., S.L.B. & M.



Internet COPY

SERIAL NO. OUTSIDE SUBS:
37-20-000-PARCEL

SERIAL No. = 37-19-010-LTS

REVISIONS	

SIDDOWAY SUBDIVISION
BLOCK 4

Section 20 T.13N. R.6E.	book _____	page _____
drawn by L.M.	date JAN. 79	scale 1" = 100'