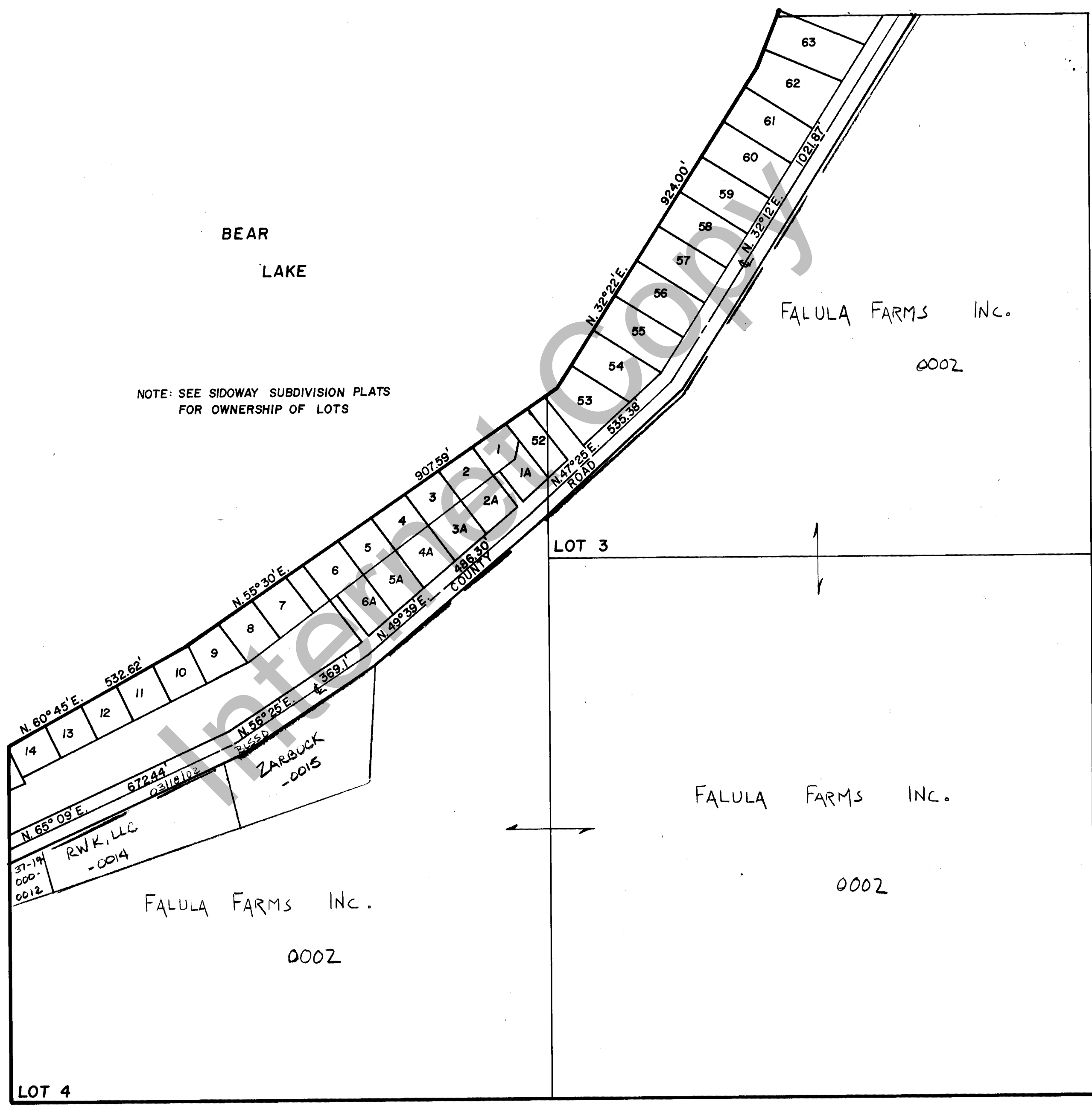


RICH COUNTY
 SW 1/4, SECTION 20, T.13N.R.6E.,S.L.B.&M.

SERIAL NO.= 37-20-000 PARCEL



NOTE: SEE SIDOWAY SUBDIVISION PLATS FOR OWNERSHIP OF LOTS

REVISIONS		

THIS PLAT IS MADE SOLELY FOR THE PURPOSE OF ASSISTING IN LOCATING THE LAND, AND THE RECORDER ASSUMES NO LIABILITY FOR VARIATIONS, IF ANY, WITH AN ACTUAL SURVEY.

Section 20 T.13N.R. 6E. book page
 drawn by DW date 4-80 scale 1"=200'