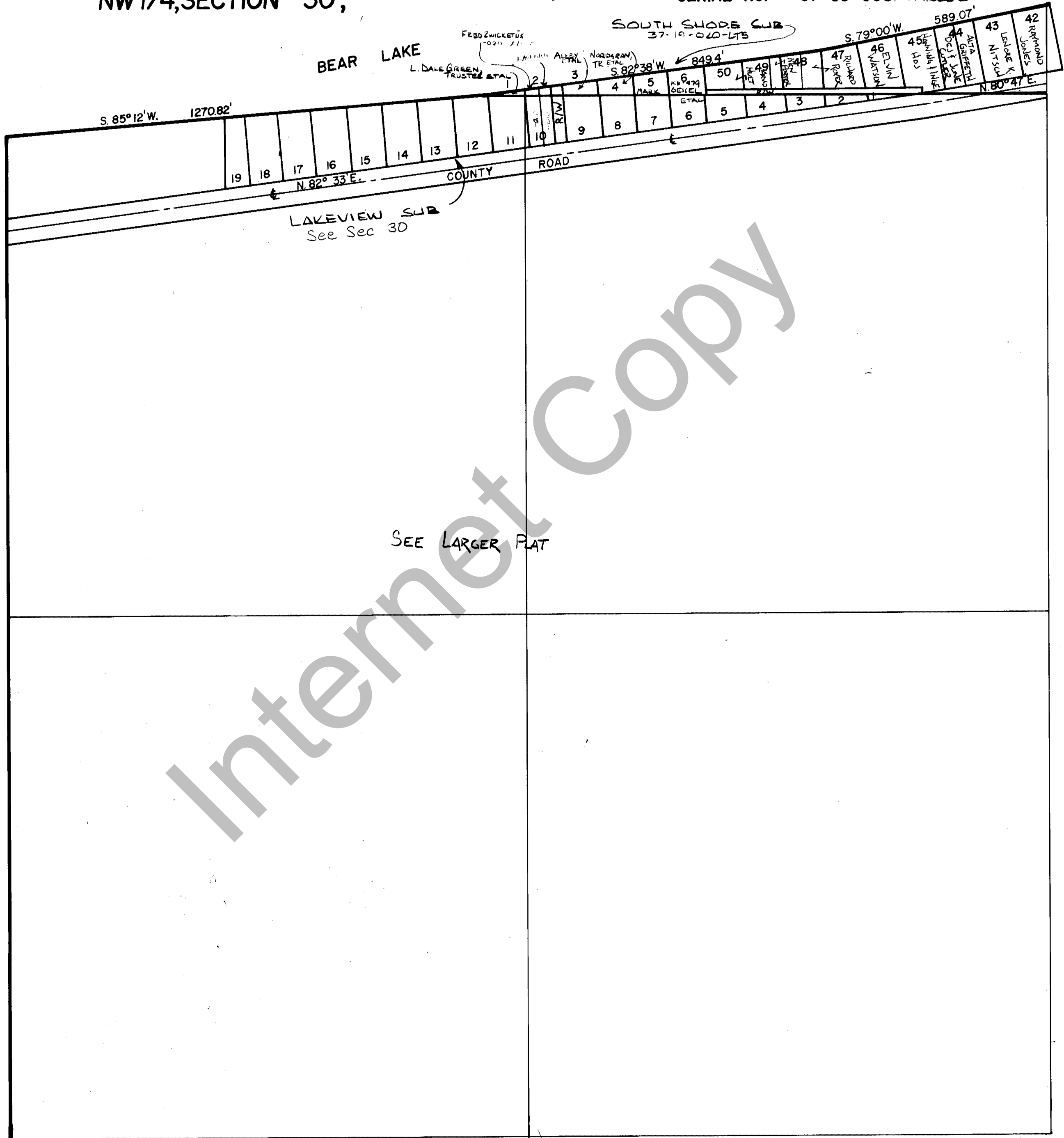


RICH COUNTY

SW 1/4, SECTION 19, T. 13 N. R. 6 E., S.L.B. & M. SERIAL NO.= 37-30-000-PARCEL
NW 1/4, SECTION 30,



SEE LARGER PLAT

REVISIONS		

THIS PLAT IS MADE SOLELY FOR THE PURPOSE OF ASSISTING IN LOCATING THE LAND, AND THE RECORDER ASSUMES NO LIABILITY FOR VARIATIONS, IF ANY, WITH AN ACTUAL SURVEY.

Section 19 & 30 T. 13 N. R. 6 E.	book	page
drawn by DW	date 4-80	scale 1"=200'