

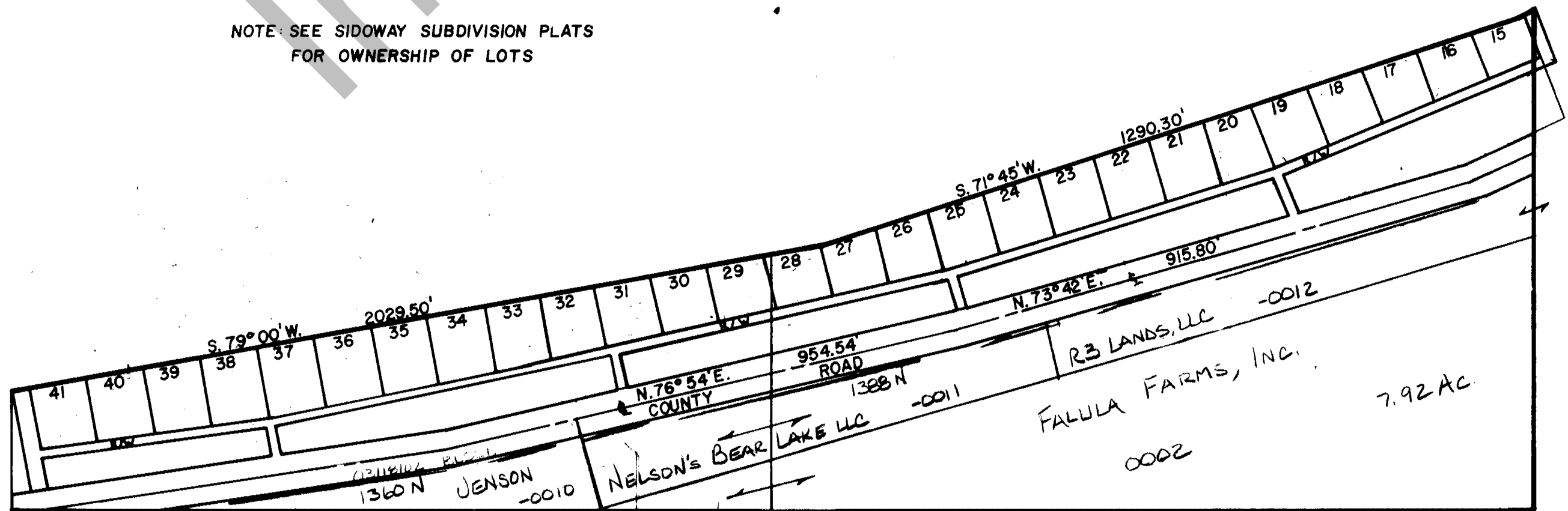
RICH COUNTY  
 SE 1/4, SECTION 19, T. 13 N. R. 6 E., S.L.B. & M.

SERIAL NO. = 37-19-000-PARCEL.

Internet Copy

BEAR  
 LAKE

NOTE: SEE SIDOWAY SUBDIVISION PLATS  
 FOR OWNERSHIP OF LOTS



T.M.S.

REVISIONS	

THIS PLAN IS VOID FOR THE  
 PURPOSE OF ASSISTING IN LOCATING  
 THE LAND AND THE RECORDED AS  
 BEING NO LIABILITY FOR VARIATIONS  
 IF ANY WITH AN ACTUAL SURVEY

Section 19 T. 13 N. R. 6 E.		book	page
drawn by DW	date 4-80	scale 1" = 200'	