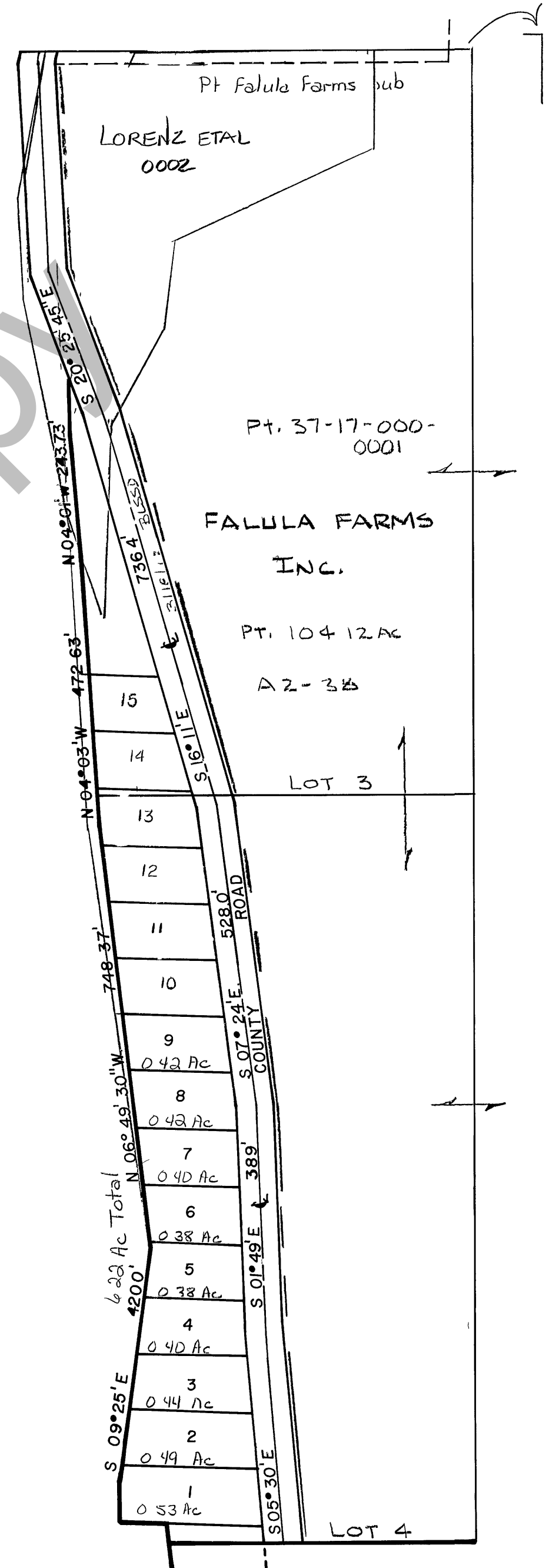


RICH COUNTY
 SW1/4, SECTION 17, T.13 N.R. 6 E., S.L.B.&M.

SERIAL NO 37-17-000 - PARCEL

BEAR
 LAKE



NOTE SEE FALULA FARMS SUBDIVISION
 FOR OWNERSHIP OF PLATS

REVISIONS	

THIS PLAT IS MADE SOLELY FOR THE
 PURPOSE OF RECORDING IN LOCATING
 THE LAND AND IS NOT TO BE CONSIDERED AS
 A GUARANTEE OF ACCURACY. THE SURVEYOR
 ASSUMES NO LIABILITY FOR ERRORS OR OMISSIONS
 IF ANY WITH AN ACTUAL SURVEY

Section 17 T 13N R 6E		book	page
drawn by DW	date 4-80	scale 1" = 200'	

T.M.S.