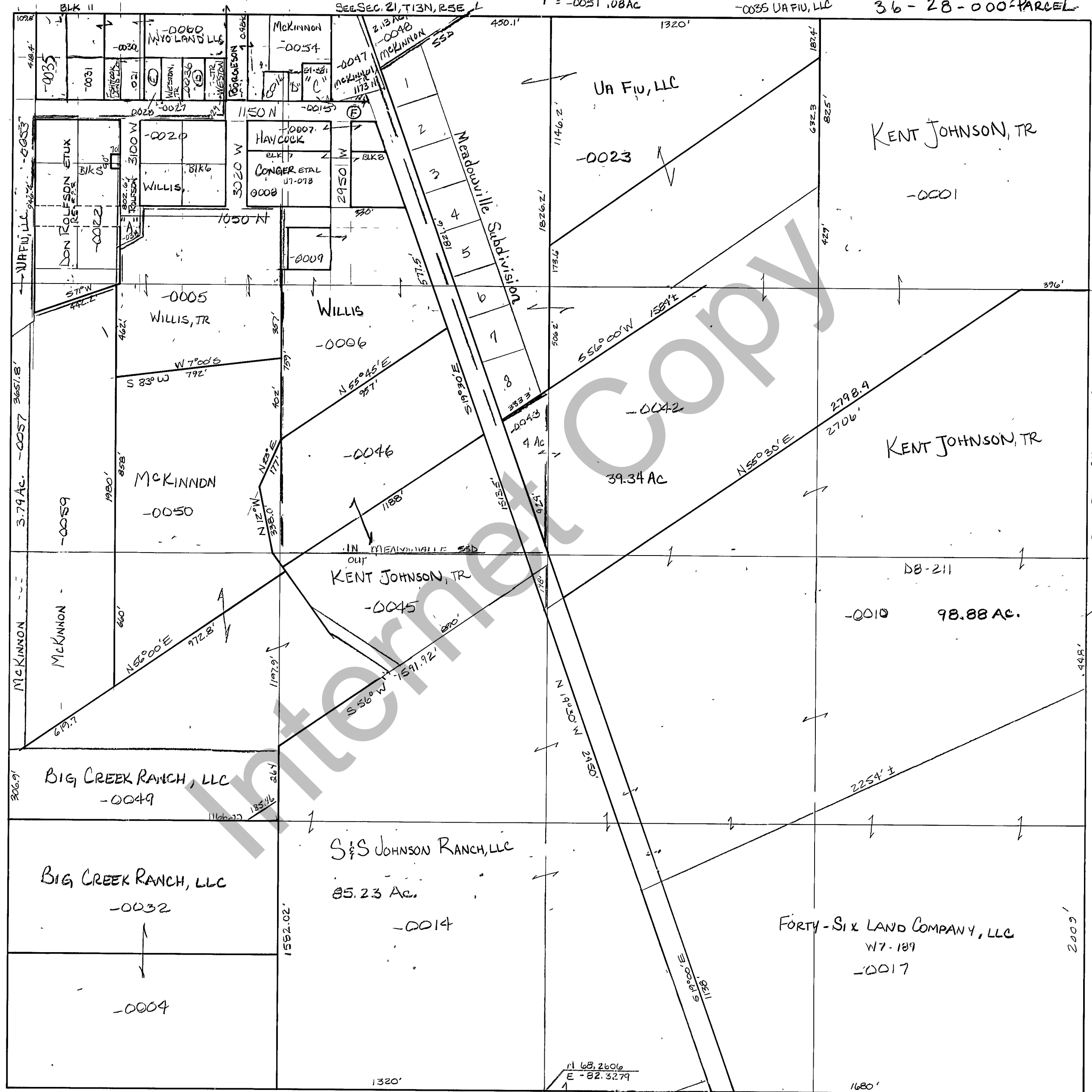


RICH COUNTY
 SECTION 28, T.13N., R.5E., S.L.B.&M.

"A" = LeMASTERS
 "B" = JAY W WESTON RB-310-336
 "C" = -0015 ARCHULETA
 MEADOWVILLE TOWNSITES

"D" = WILLIS -0040
 "E" = WYO LAND, LLC -0028
 "F" = -0051 .08AC

-0016-WILLIS
 -0035 UA FIO, LLC
 36-28-000-PARCEL



SEE SEC. 27, T13N, R5E

N 68.2606
 E - 82.3279

SEE SEC 33,
 T13N, R5E

REVISIONS	

THIS PLAT IS MADE SOLELY FOR THE PURPOSE OF ASSISTING IN LOCATING THE LAND, AND THE RECORD HEREON ASSUMES NO LIABILITY FOR VARIATIONS, IF ANY, WITH AN ACTUAL SURVEY.

Section 28 T.13N. R. 5E		book	page
drawn by GP	date NOV 1978		
		scale 1" = 400'	