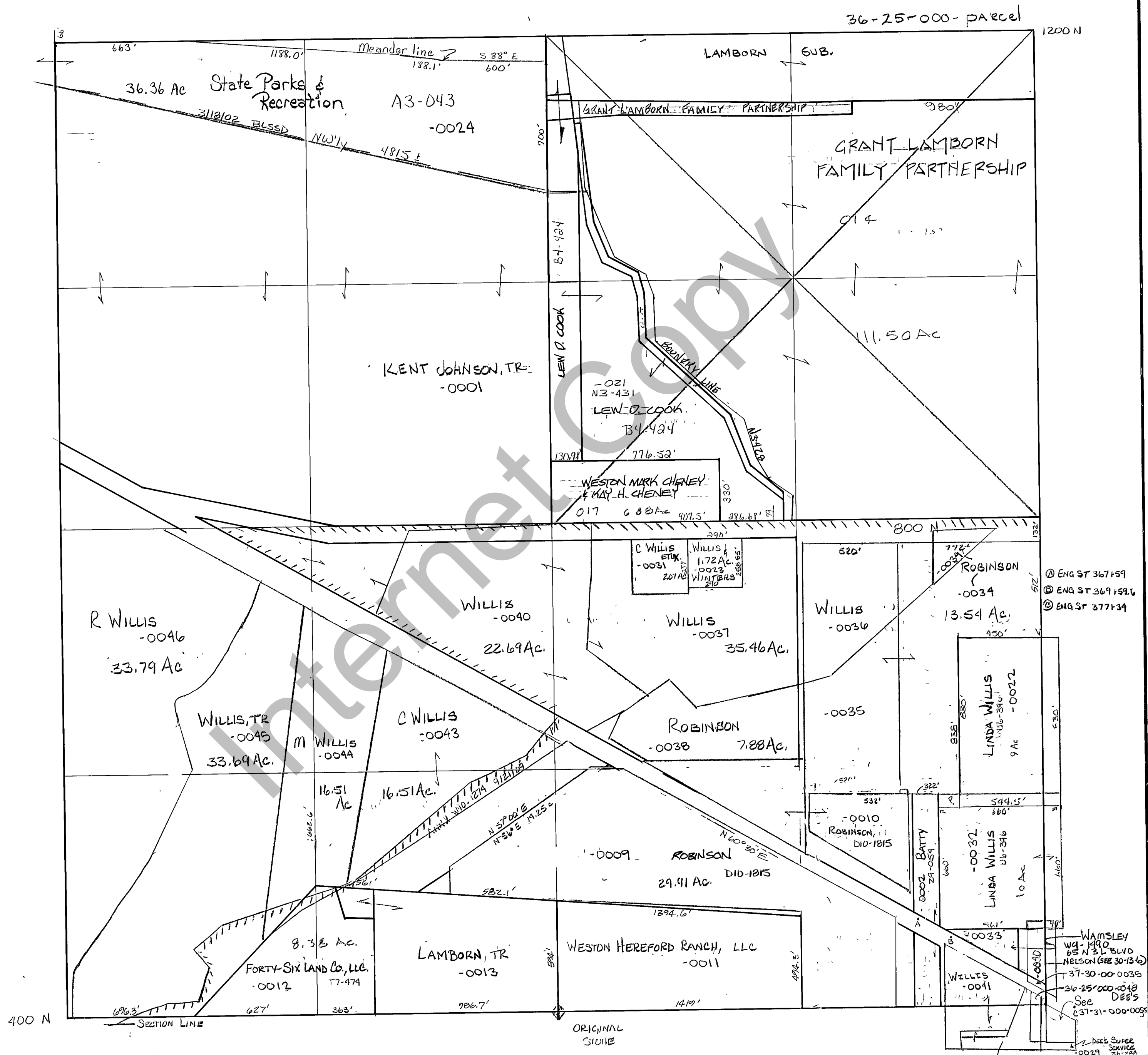


# RICH COUNTY SECTION 25, T.13N., R.5E., S.L.B.&M.



- ① ENG ST 367159
- ② ENG ST 369159.6
- ③ ENG ST 377134

REVISIONS	

THIS PLAT IS MADE SOLELY FOR THE PURPOSE OF ASSISTING IN LOCATING THE LAND, AND THE RECORDER ASSUMES NO LIABILITY FOR VARIATIONS, IF ANY, WITH AN ACTUAL SURVEY

DEES SUPER SERVICE 00647

Section 25 T.13N R.5E

drawn by GP date NOV 1978 scale 1"=400'

book page