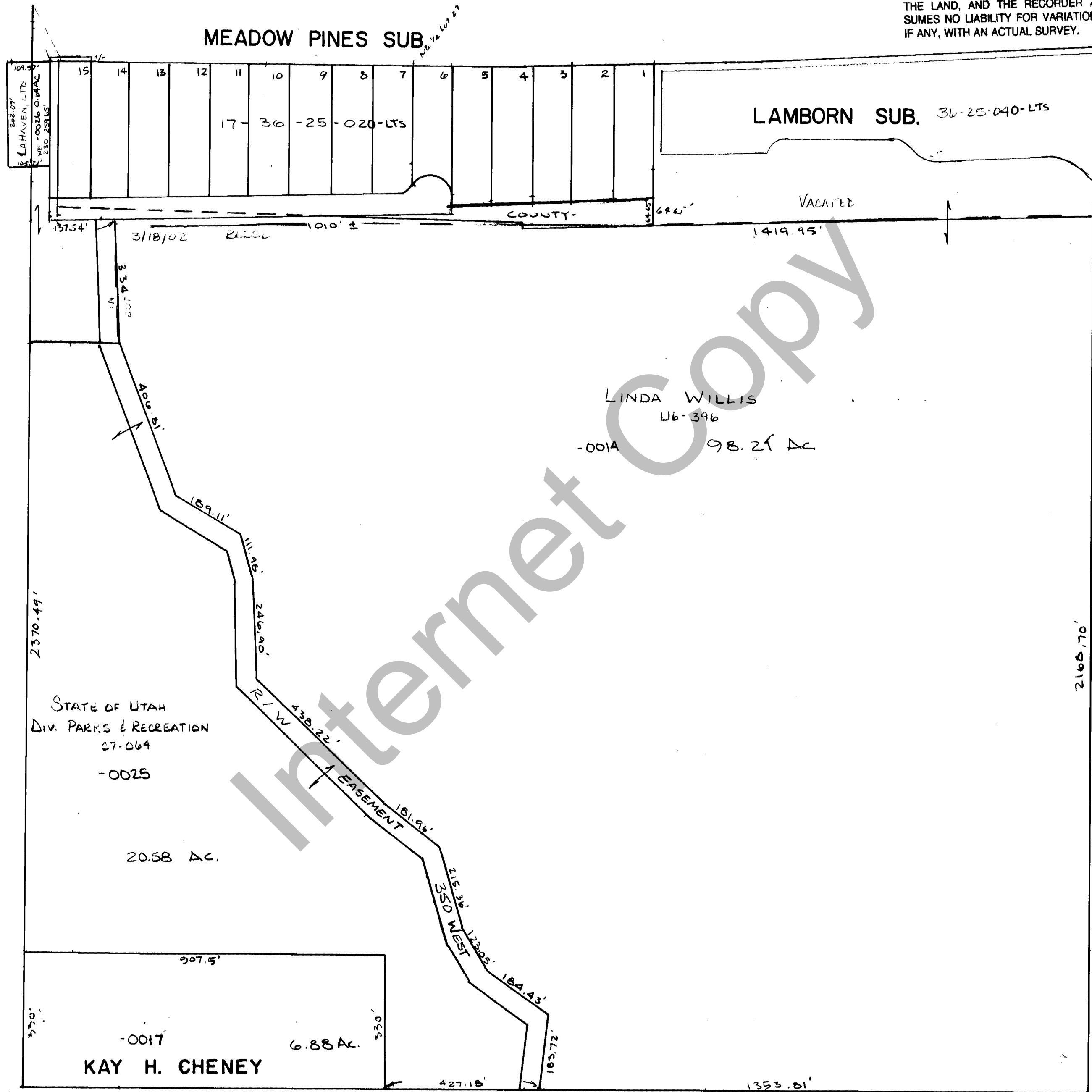


RICH COUNTY
NE/4, SEC 25, T.13 N. R. 5 E.

THIS PLAT IS MADE SOLELY FOR THE PURPOSE OF ASSISTING IN LOCATING THE LAND, AND THE RECORDER ASSUMES NO LIABILITY FOR VARIATIONS, IF ANY, WITH AN ACTUAL SURVEY.



REVISIONS	INITIAL	AND DATE

NOTES

U.S.T.C.
approval
Date:

PLAT DEPARTMENT
RICH COUNTY, UTAH

NE 1/4
Section 25 T13NR 5E
drawn by: DE date: 7-82

book page
scale 1"=200'