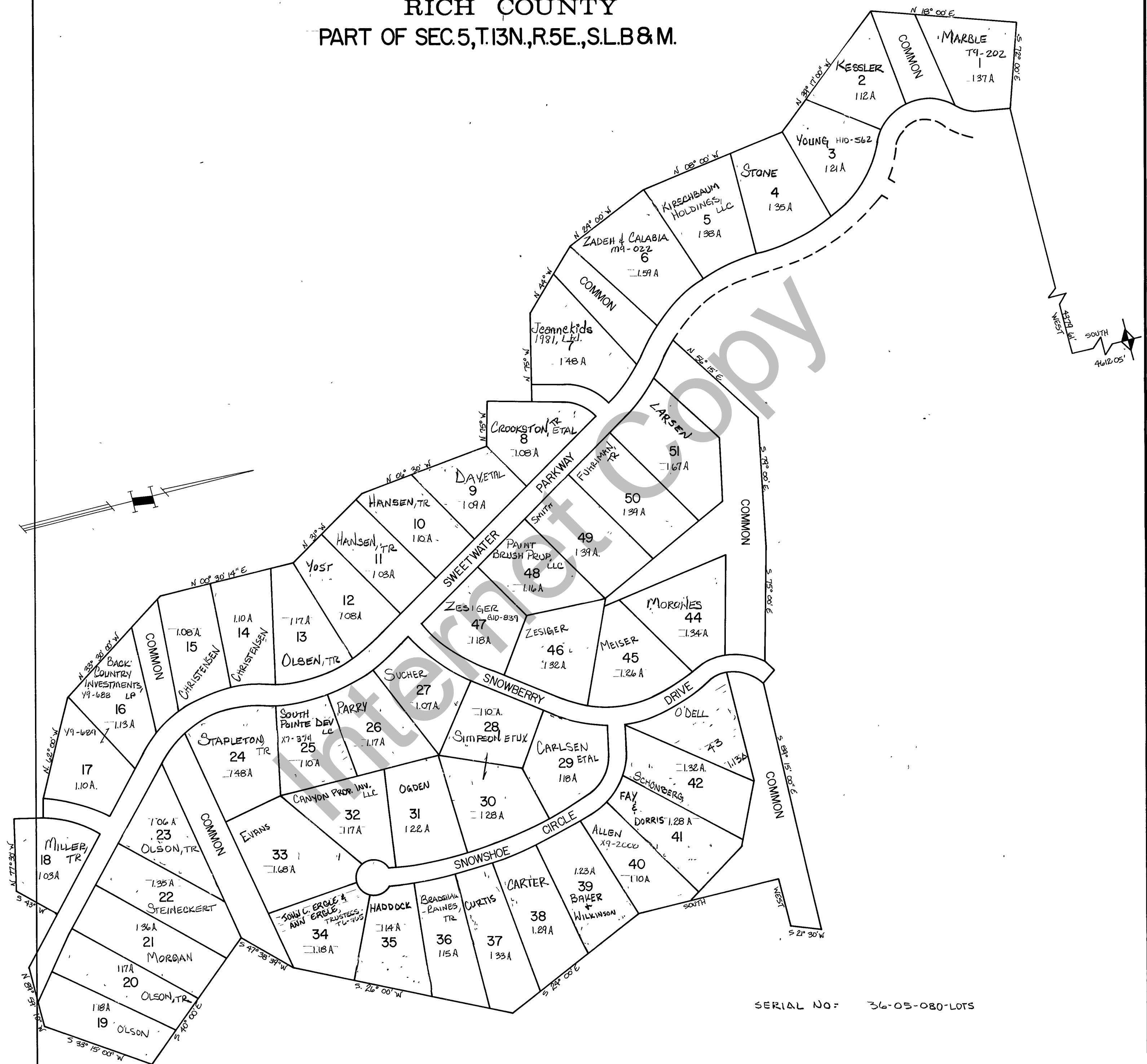


RICH COUNTY
 PART OF SEC. 5, T. 13N., R. 5E., S. 1B & M.



SERIAL NO: 36-05-080-LOTS

REVISIONS		SWEETWATER PARK SUBDIVISION NO. 8	Section 5 T. 13N. R. 5E		book	page
			drawn by L.M.	date DEC. 78	scale 1" = 200'	