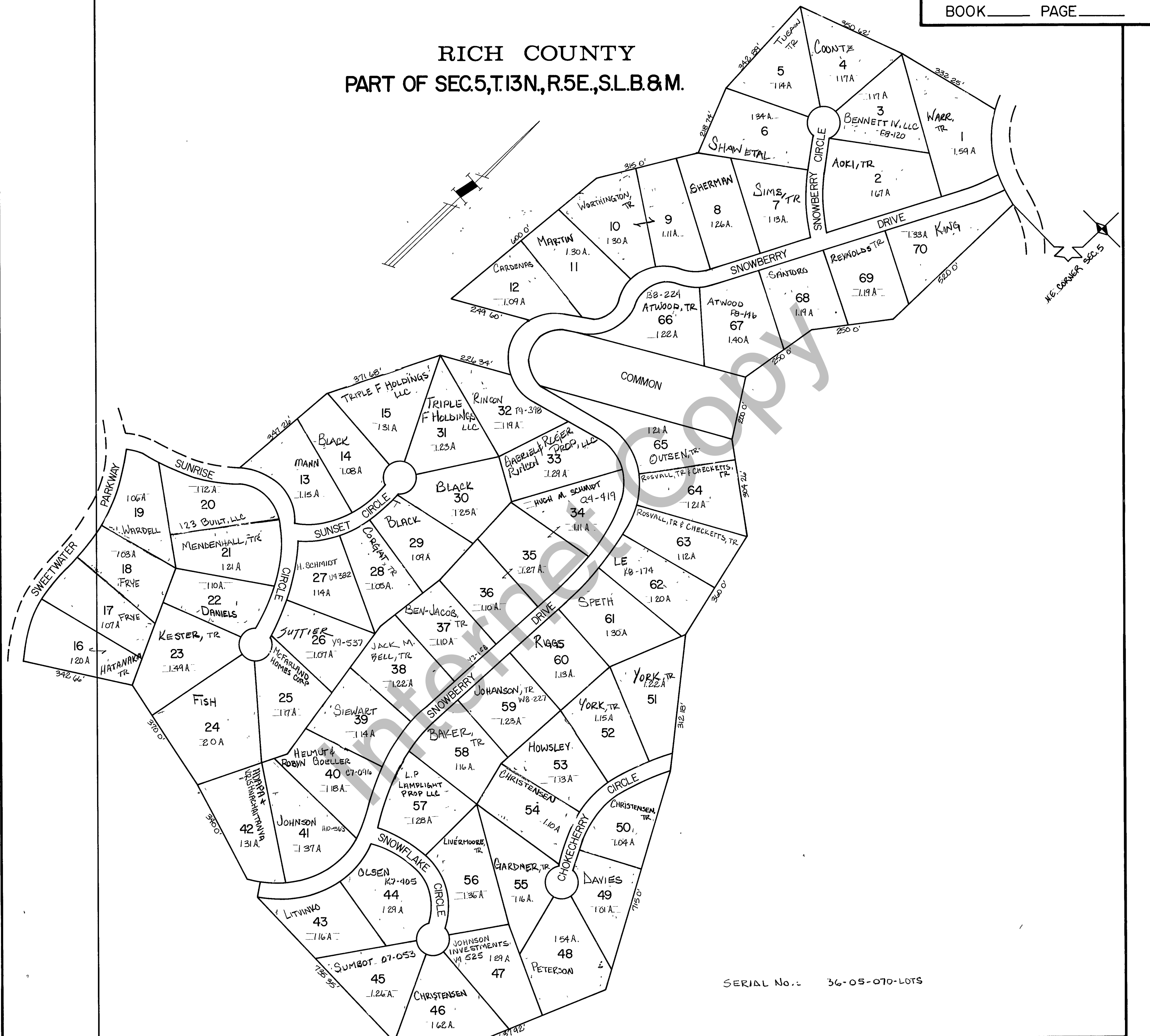


RICH COUNTY
PART OF SEC.5,T.13N.,R.5E.,S.L.B.&M.



SERIAL No.: 36-05-070-LOTS

REVISIONS	

SWEETWATER PARK
SUBDIVISION NO. 7

Section 5 T.13N. R. 5E.	book	page
drawn by L.M.	date DEC. 78	scale 1" = 200'