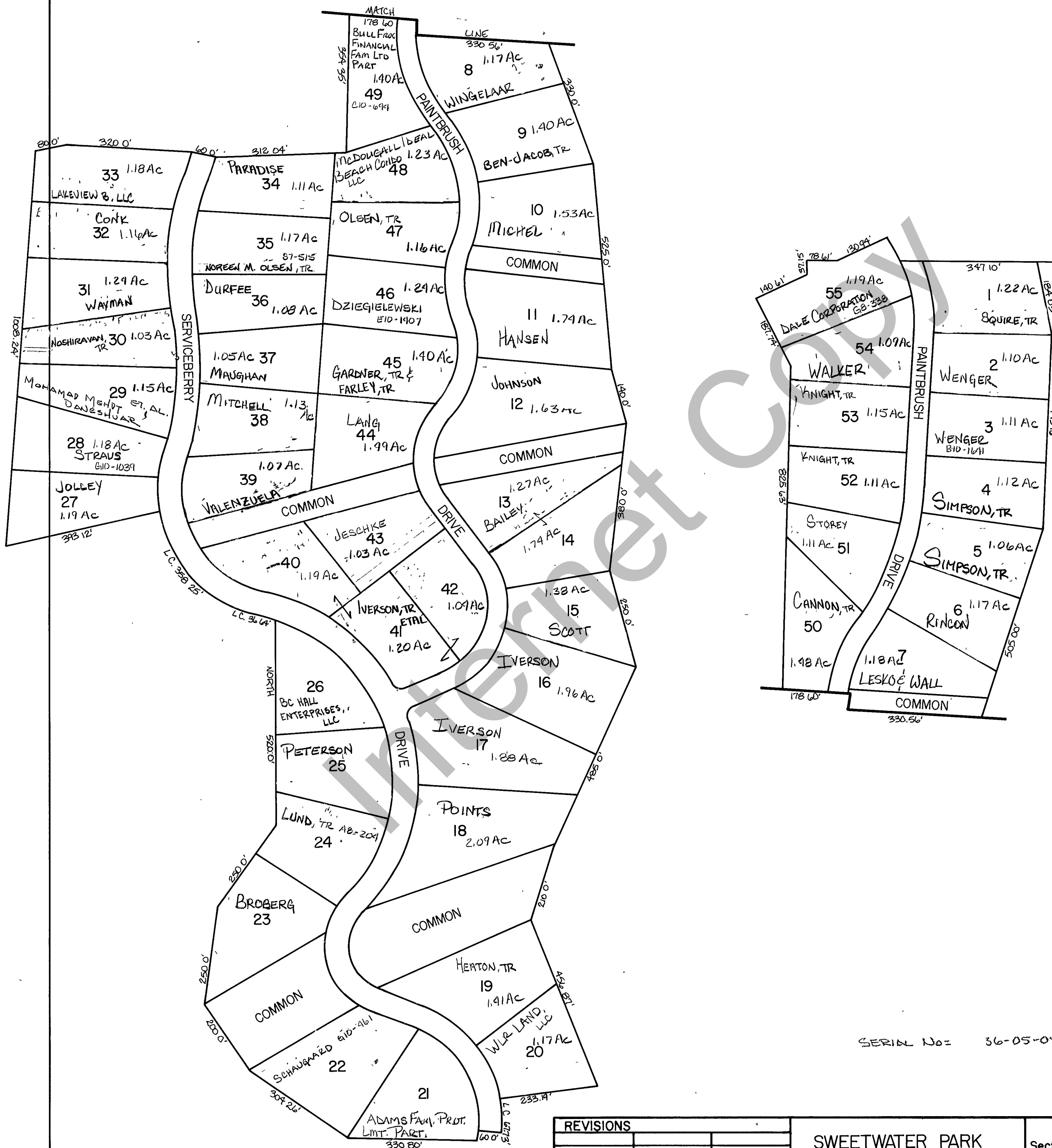


RICH COUNTY PART OF SEC. 5, T. 13N., R. 5E., S. 1B. & M.



SERIAL No = 36-05-050-LOTS

REVISIONS	

SWEETWATER PARK
SUBDIVISION NO. 5

Section <u>5</u> T. <u>13N.</u> R. <u>5E.</u>	book _____ page _____
drawn by L.M.	date DEC. 78
scale 1" = 200'	