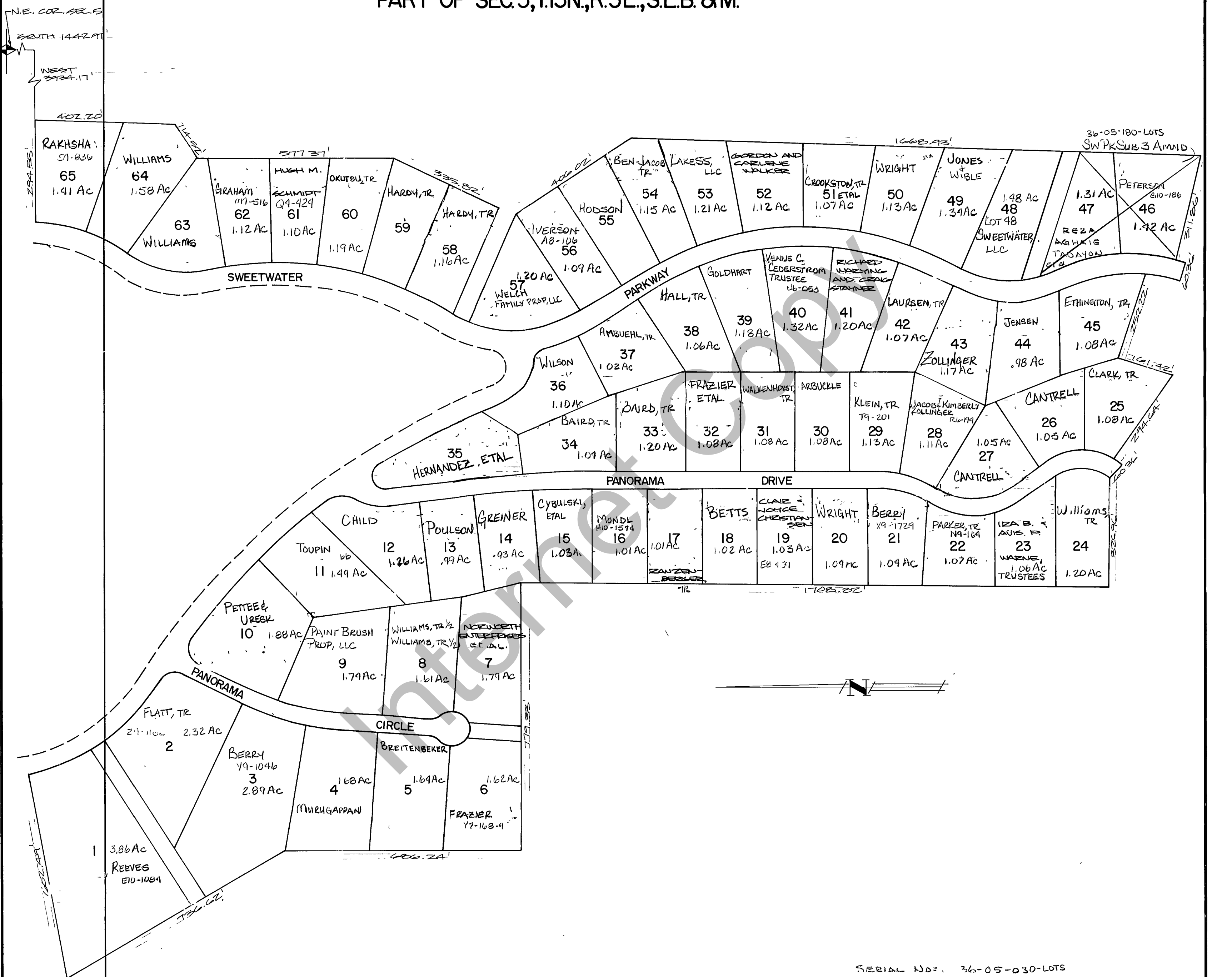


RICH COUNTY

PART OF SEC. 5, T. 13N., R. 5E., S.L.B. & M.



SERIAL NO. 36-05-030-LOTS

REVISIONS	SWEETWATER PARK SUBDIVISION NO. 3	Section 5 T. 13N. R. 5E.		book page
		drawn by DK	date DEC. 1978	scale 1" = 100'