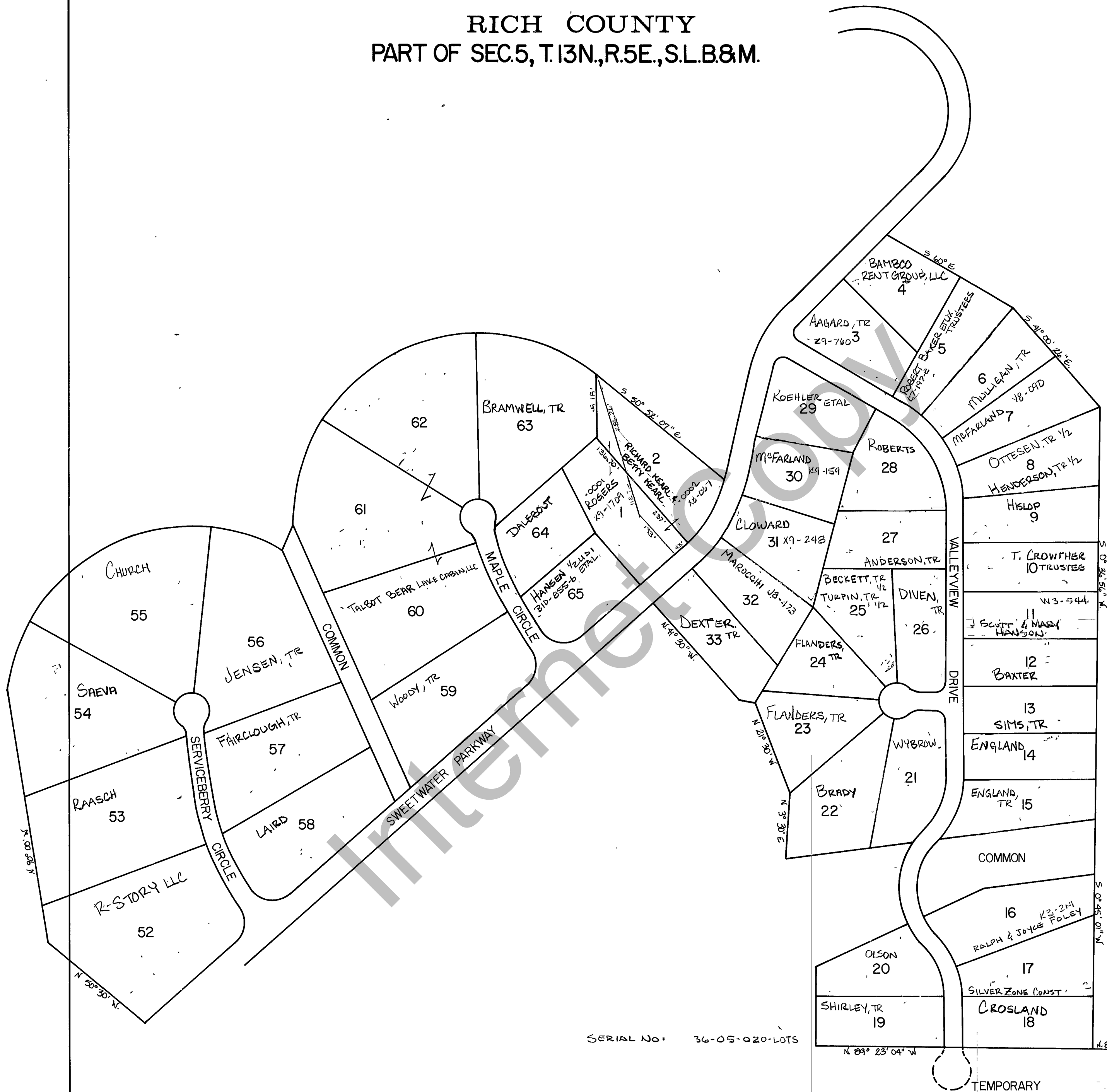


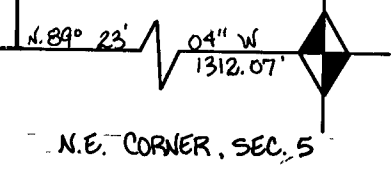
# RICH COUNTY

## PART OF SEC. 5, T. 13N., R. 5E., S.L. B & M.



SERIAL NO: 36-05-020-LOTS

ALL LOTS NOT MARKED OWNED BY SWEETWATER INC.



REVISIONS	SWEETWATER PARK SUBDIVISION NUMBER 2	Section 5 T. 13N. R. 5E.	book page

drawn by L.M. date NOV 78 scale 1" = 200'