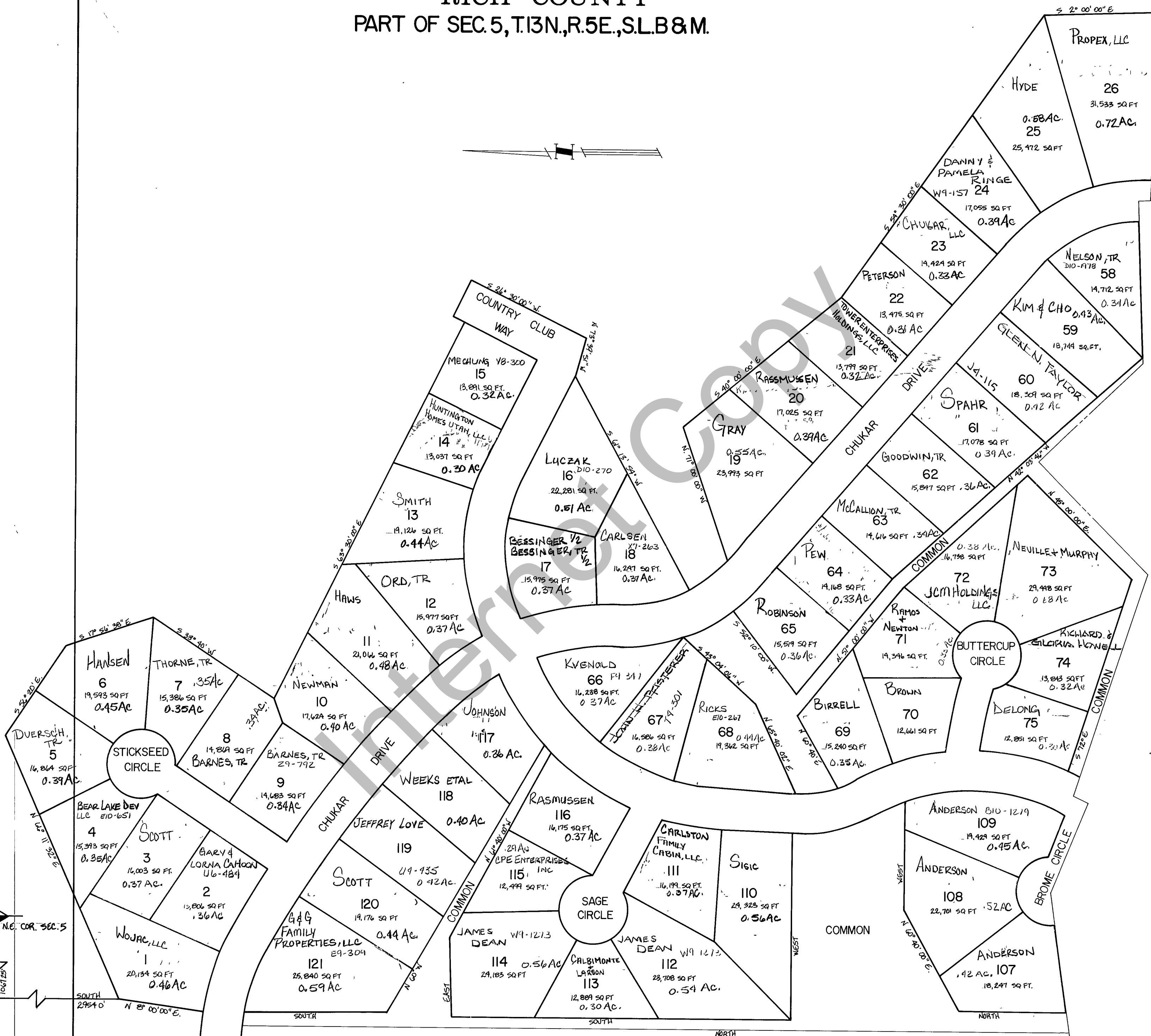
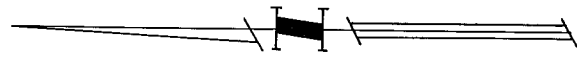


# RICH COUNTY PART OF SEC. 5, T.13N., R.5E., S.L.B & M.



SERIAL No.: 56-05-140-LOT

REVISIONS	

SWEETWATER PARK  
OMEGA SUBDIVISION  
NO. 3 AMENDMENT

Section 5 T.13N. R.5E	book	page
drawn by L.M.	date NOV. 78	scale 1" = 100'