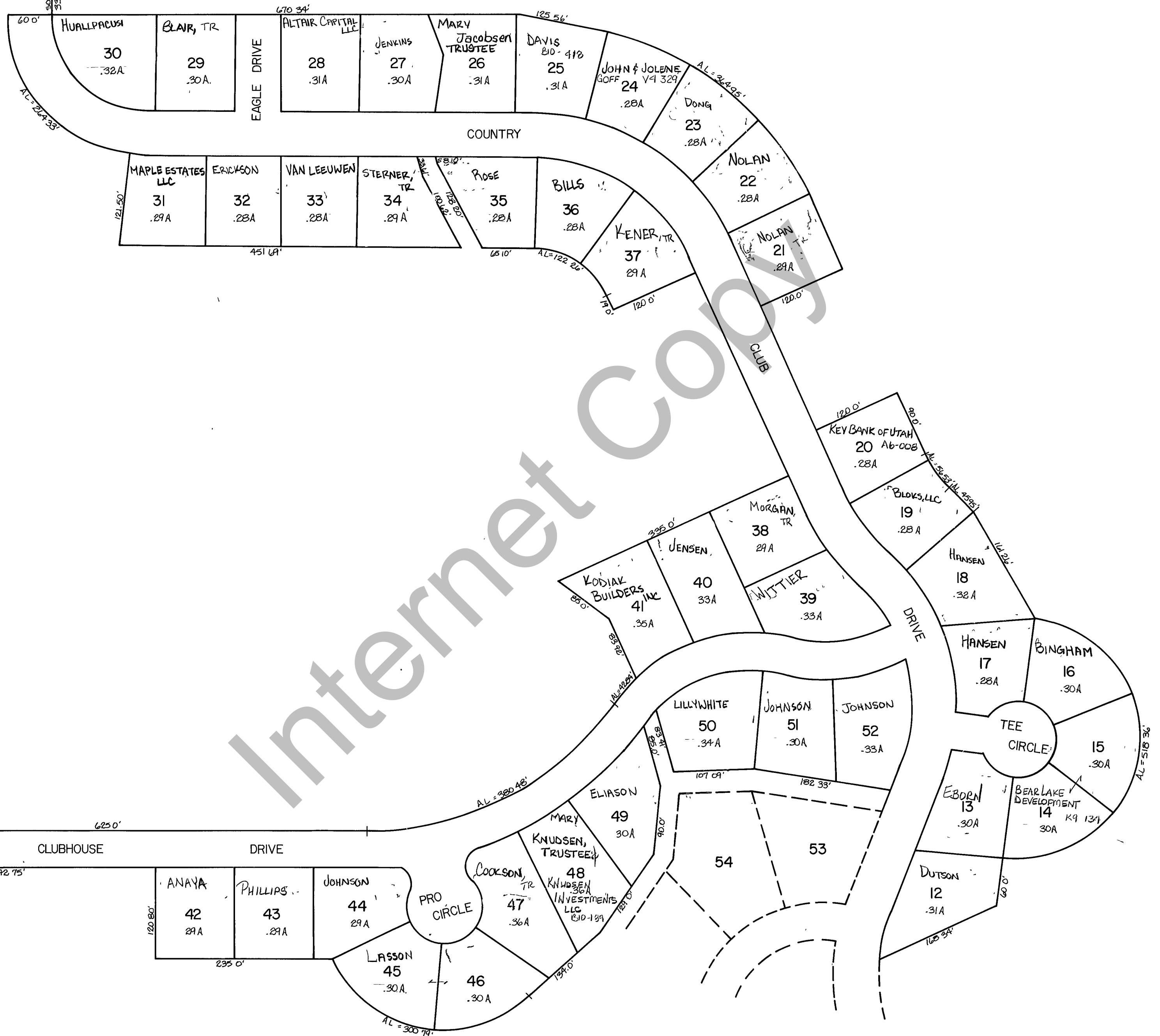
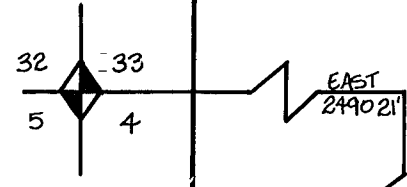


RICH COUNTY PART OF SEC. 4, T. 13N., R. 5E., S. 1B. & M.



Internet Copy

36-04-040-LOTS

REVISIONS	

SWEETWATER PARK
GOLF COURSE
SUBDIVISION NO. 4

Section 4 T. 13N. R. 5E.	book _____ page _____
drawn by L.M.	date DEC. 78
scale 1" = 100'	