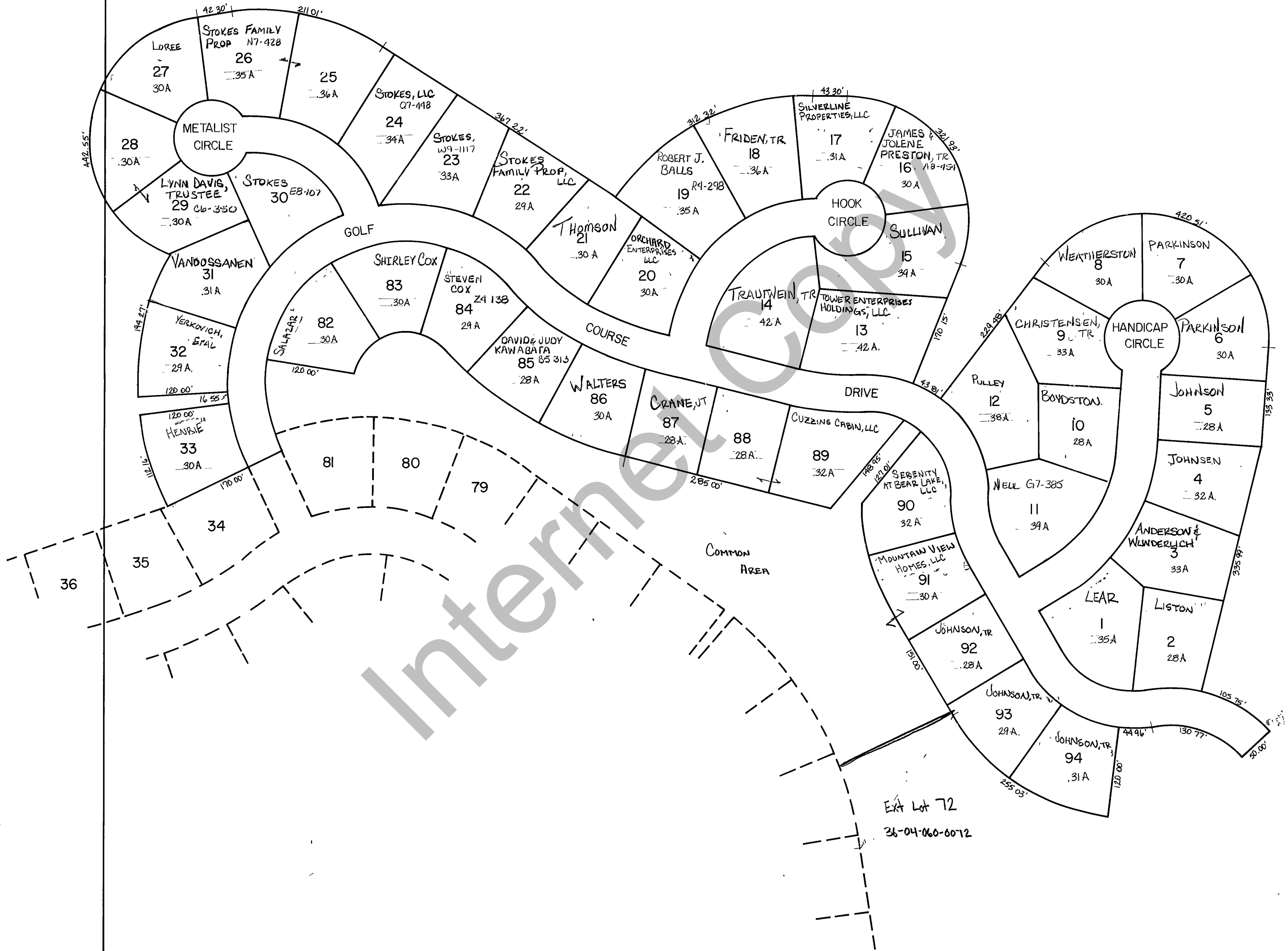


RICH COUNTY  
 PART OF SEC. 4, T. 13N., R. 5E., S. L.B. & M.



36-04-060-LOTS

REVISIONS			SWEETWATER PARK GOLF COURSE SUBDIVISION NO. 6	Section 4 T. 13N. R. 5E.		book	page
				drawn by L.M.	date NOV 78	scale 1" = 100'	