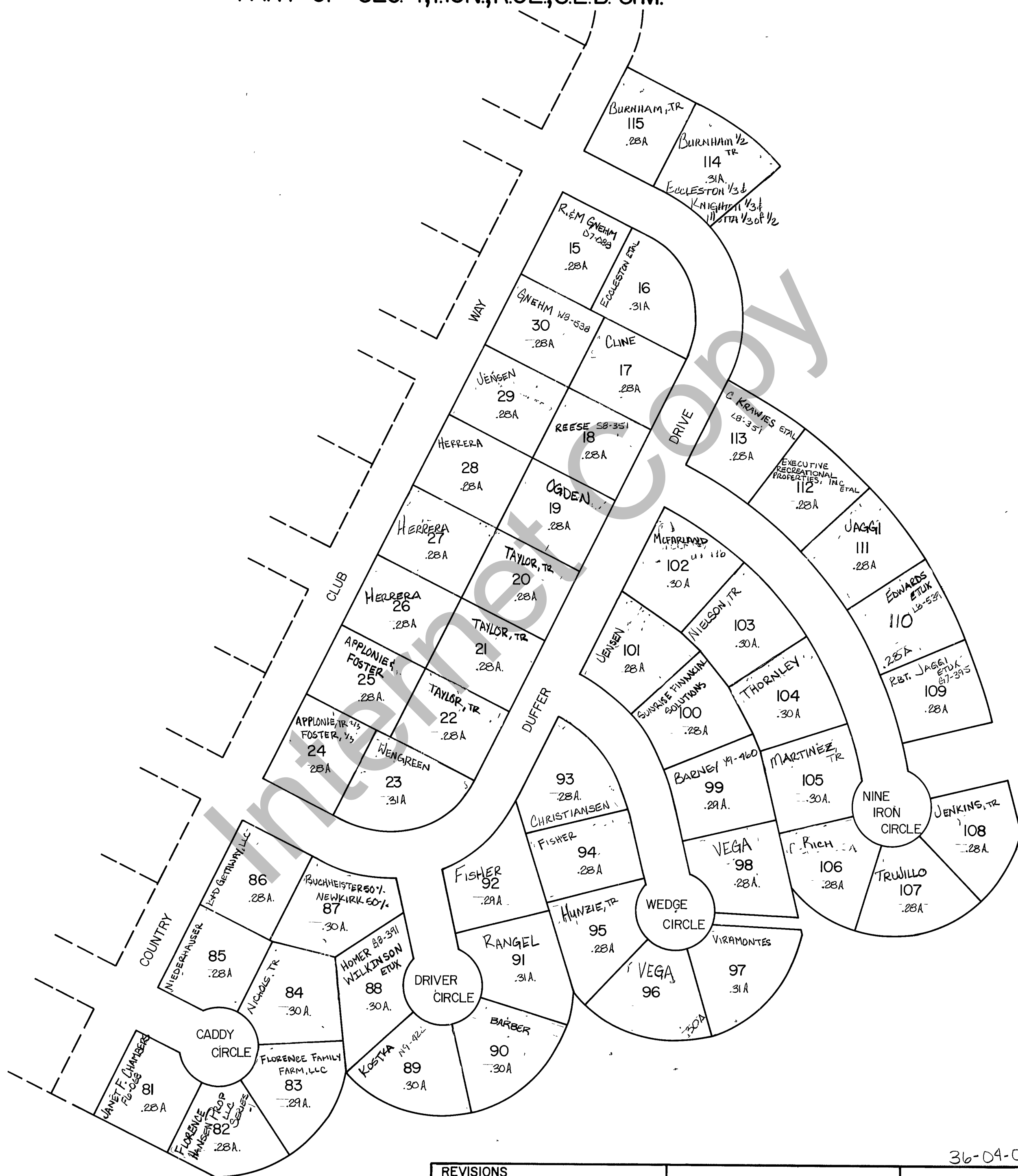


# RICH COUNTY PART OF SEC. 4, T.13N., R.5E., S.L.B. & M.



36-04-020-LOTS

REVISIONS	

SWEETWATER PARK  
GOLF COURSE  
SUBDIVISION NO. 2

Section 4 T.13N. R.5E	book	page
drawn by L.M.	date DEC. 78	scale 1"=100'