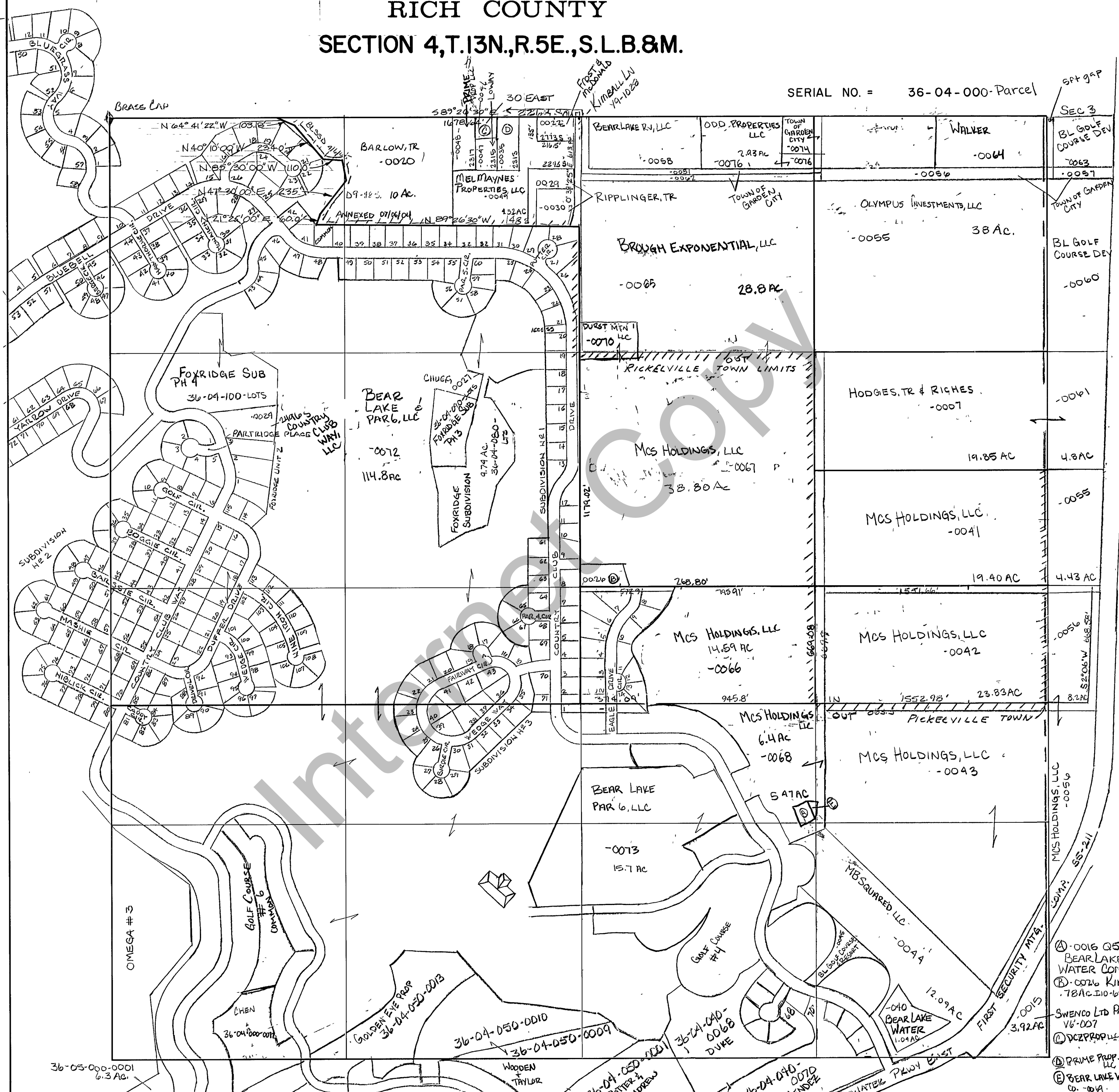


**RICH COUNTY**  
**SECTION 4, T.13N., R.5E., S.1.B.&M.**

SERIAL NO. = 36-04-000-Parcel



**REVISIONS**

NO.	DESCRIPTION

THIS PLAT IS MADE SOLELY FOR THE PURPOSE OF ASSISTING IN LOCATING THE LAND, AND THE RECORDER ASSUMES NO LIABILITY FOR VARIATIONS, IF ANY, WITH AN ACTUAL SURVEY.

Section 4 T. 13N R. 5E book page \_\_\_\_\_  
 drawn by BHU date 4/7/31 scale 1"=400'

- Ⓐ 0016 Q5-551 BEAR LAKE WATER COMP.
- Ⓑ 0026 KIMBALL 78 AC. I10-1632 TR
- Ⓒ SWENCO LTD PART V6-007
- Ⓓ DEZPROP 44-0046
- Ⓔ PRIME PROP-0035 LLC
- Ⓕ BEAR LAKE WATER CO. 0049