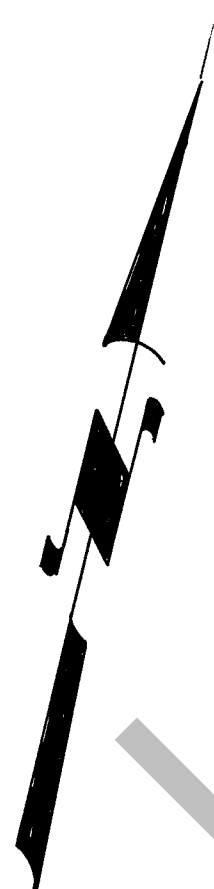
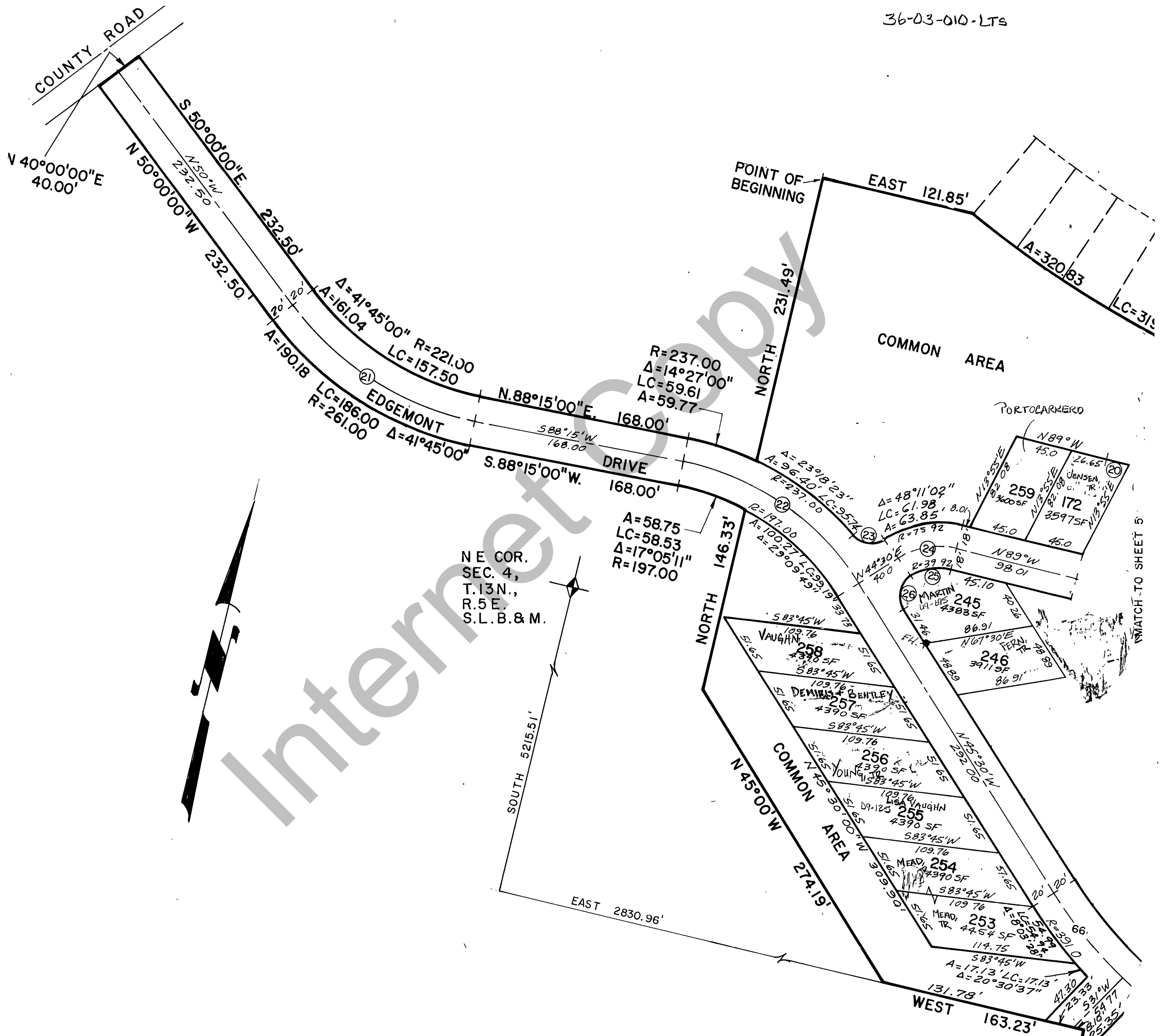


RICH COUNTY

36-03-010-LTs



Internet Copy

WATCH TO SHEET 5

172, 245-246, 253-259

SHEET 7 OF 10

	SWEETWATER PARK TRAILER & CAMPER PARK SHEET 2 OF 3	Section <u>3</u> Township <u>13 N</u> Range <u>5E</u>	Book <u>    </u> Pg <u>    </u> Scale <u>1"=60'</u>
--	--	--	--