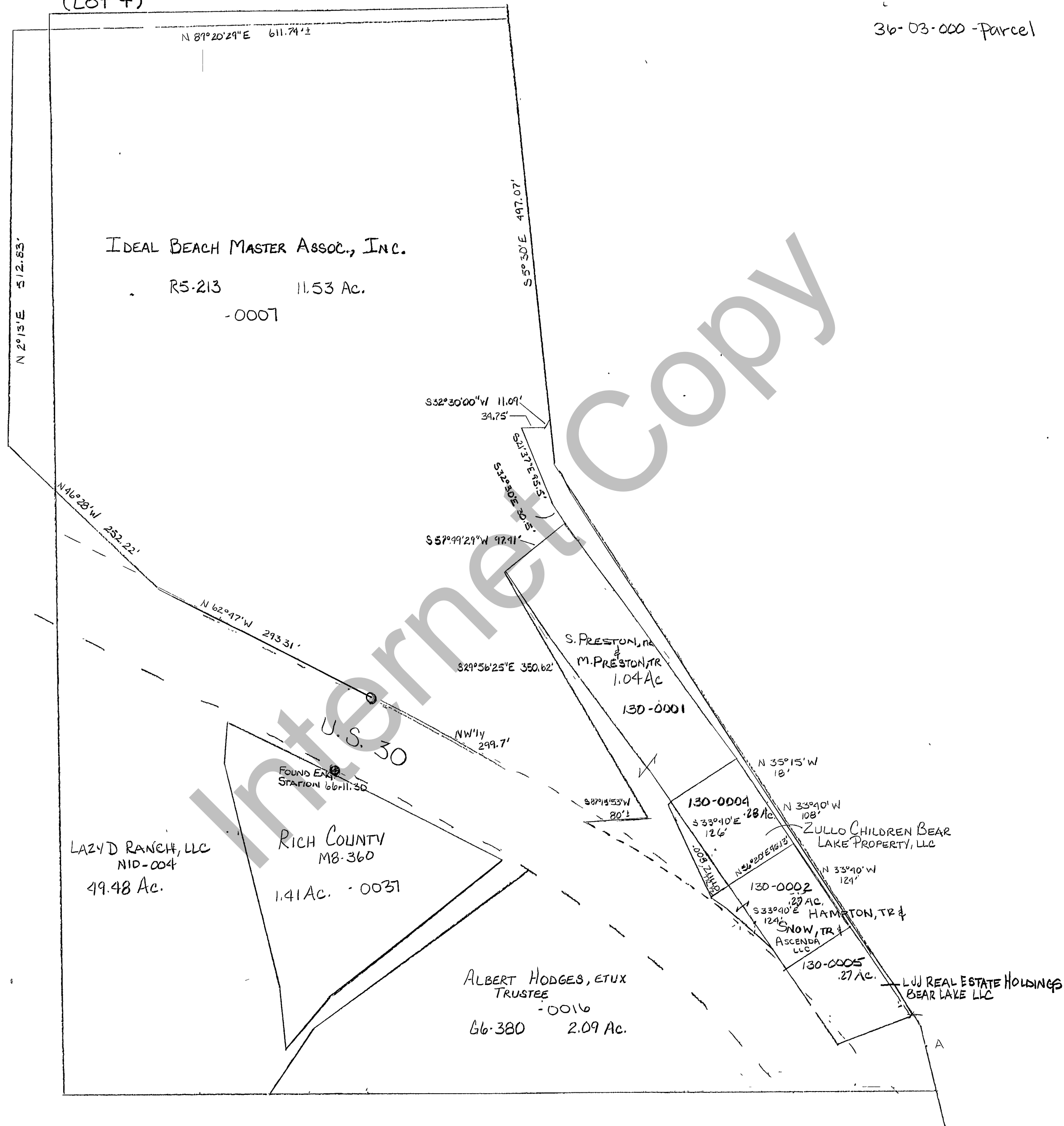


RICH COUNTY

SW 1/4 NE 1/4, SECTION 3, T. 13 N. R. 5 E., S.L.B. & M. (LOT 4)

36-03-000 - parcel



REVISIONS	

THIS PLAT IS MADE SOLELY FOR THE PURPOSE OF ASSISTING IN LOCATING THE LAND, AND THE RECORDER ASSUMES NO LIABILITY FOR VARIATIONS, IF ANY, WITH AN ACTUAL SURVEY.

SW 1/4 NE 1/4 Section 3 T. 13 N. R. 5 E.		book	page
drawn by DA	date 02-88	scale 1"=100'	