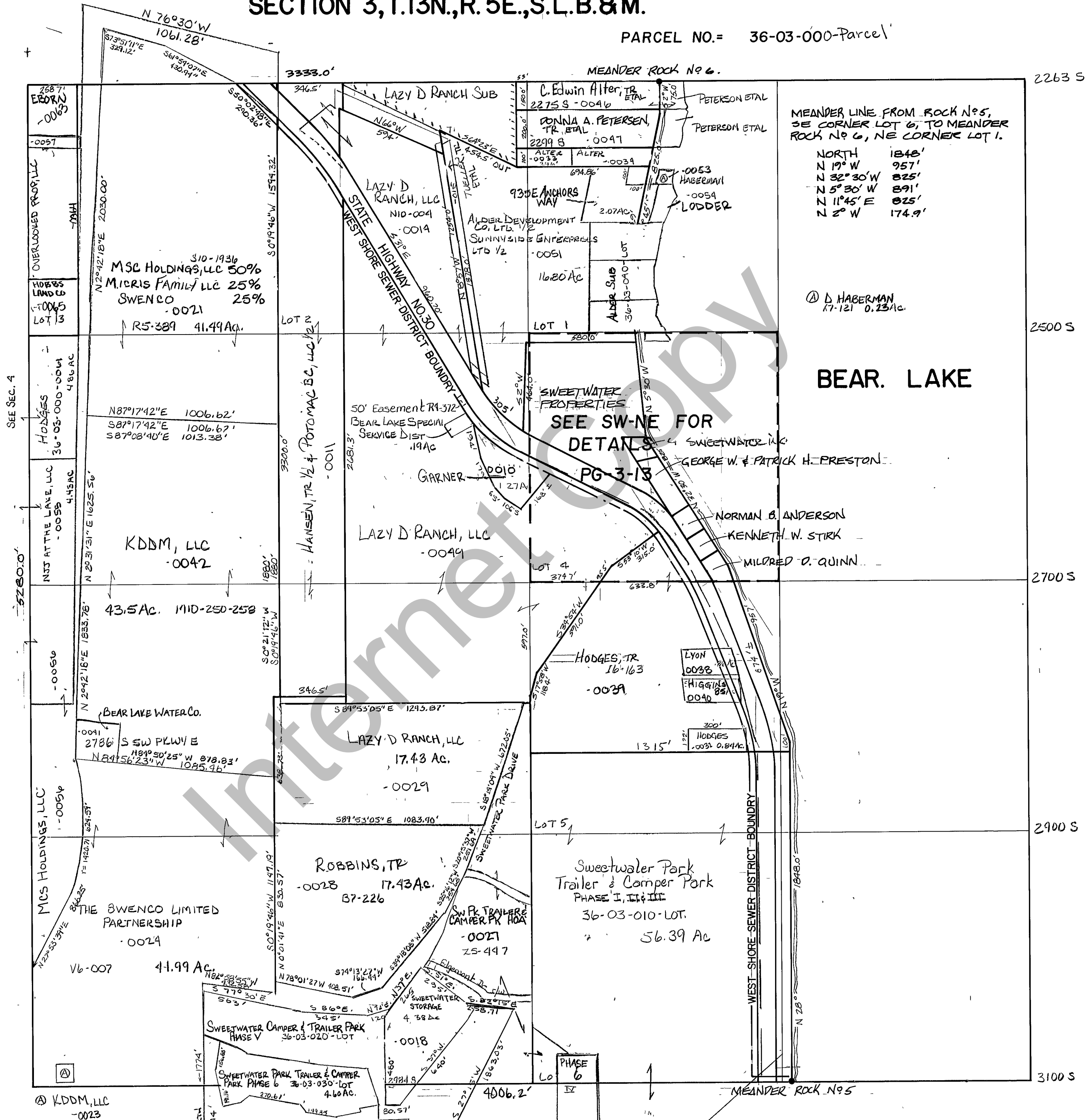


RICH COUNTY
SECTION 3, T.13N., R. 5E., S.L.B.&M.

PARCEL NO.= 36-03-000-Parcel



MEANDER LINE FROM ROCK No. 5,
 SE CORNER LOT 6, TO MEANDER
 ROCK No. 6, NE CORNER LOT 1.

NORTH	1848'
N 19° W	957'
N 32° 30' W	825'
N 5° 30' W	891'
N 11° 45' E	825'
N 2° W	174.9'

Ⓐ D. HABERMAN
 17-121 0.23Ac.

BEAR LAKE

SEE SW-NE FOR
 DETAILS

PG 3-13

SEE SEC. 4

5280.0'

5280.0'

5280.0'

Ⓐ KDDM, LLC
 -0023

PH. V, L.L.C. K7-193
 36-10-000-0007

REVISIONS	

THIS PLAT IS MADE SOLELY FOR THE
 PURPOSE OF ASSISTING IN LOCATING
 THE LAND, AND THE RECORDING THEREON,
 ASSUMES NO LIABILITY FOR VARIATIONS,
 ERRORS OR OMISSIONS WITH AN ACTUAL SURVEY.

Section 3 T.13N R.5E	book	page
drawn by GP	date NOV 1978	scale 1"=400'