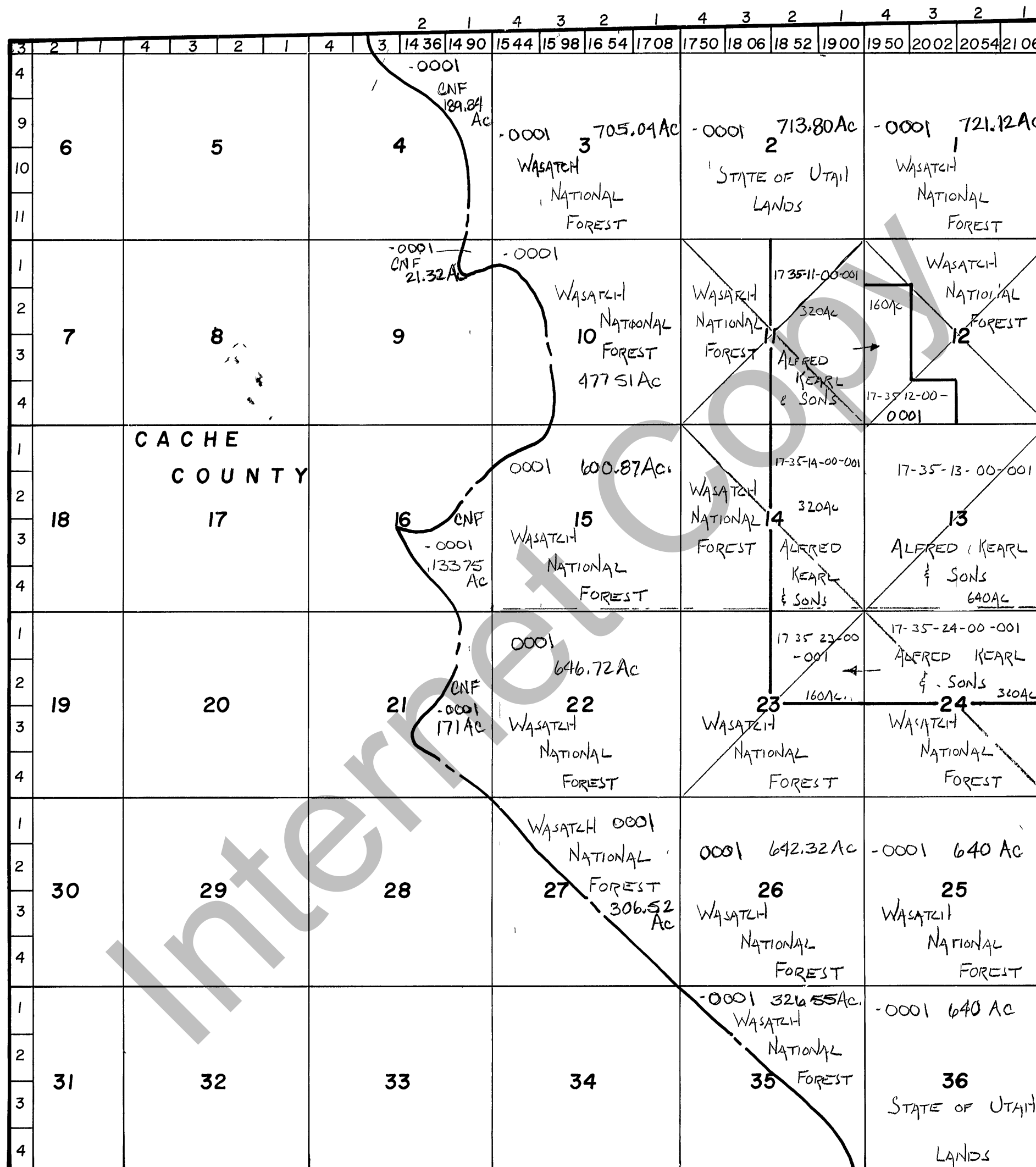


RICH COUNTY

T.13 N.R.4E., S.L.B.&M.

SERIAL NO = 35-SEC-000-Parcel



GARDEN CITY OUTSIDE
LAKE TOWN OUTSIDE

REVISIONS	

Section T 13 N. R 4E. book page

drawn by DW date 12-79 scale 1"=3000