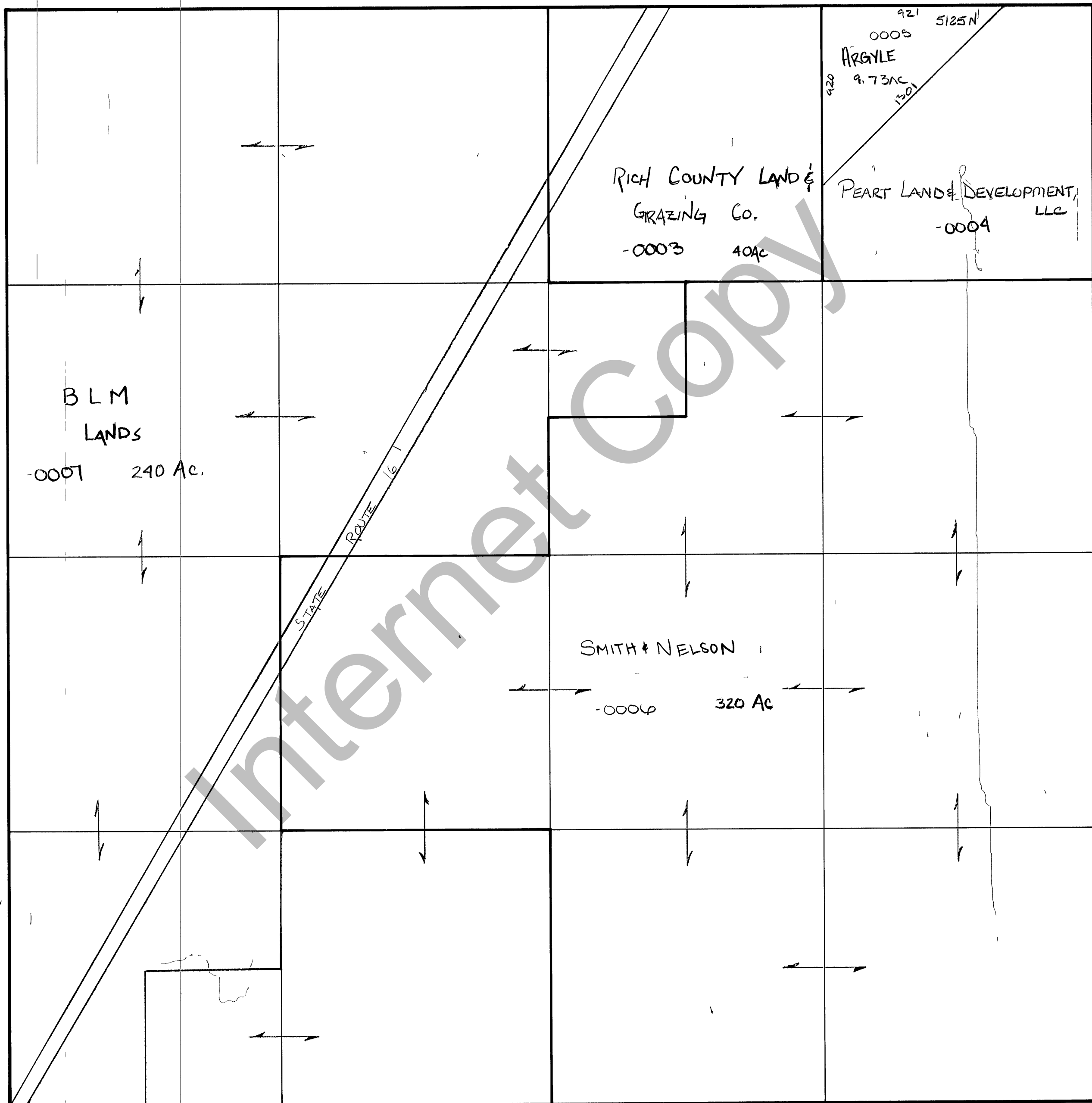


RICH COUNTY
SECTION 27 , T. 12 N. R. 7 E., S.L.B. & M.

SERIAL NO = 33-27-000-Parcel



Internet Copy

REVISIONS

THIS PLAT IS MADE SOLELY FOR THE PURPOSE OF ASSISTING IN LOCATING THE LAND AND THE RECORDER ASSUMES NO LIABILITY FOR VARIATIONS, IF ANY, WITH AN ACTUAL SURVEY.

Section 27 T 12N R 7E

drawn by DW date 12-79

book page

scale 1" = 400'