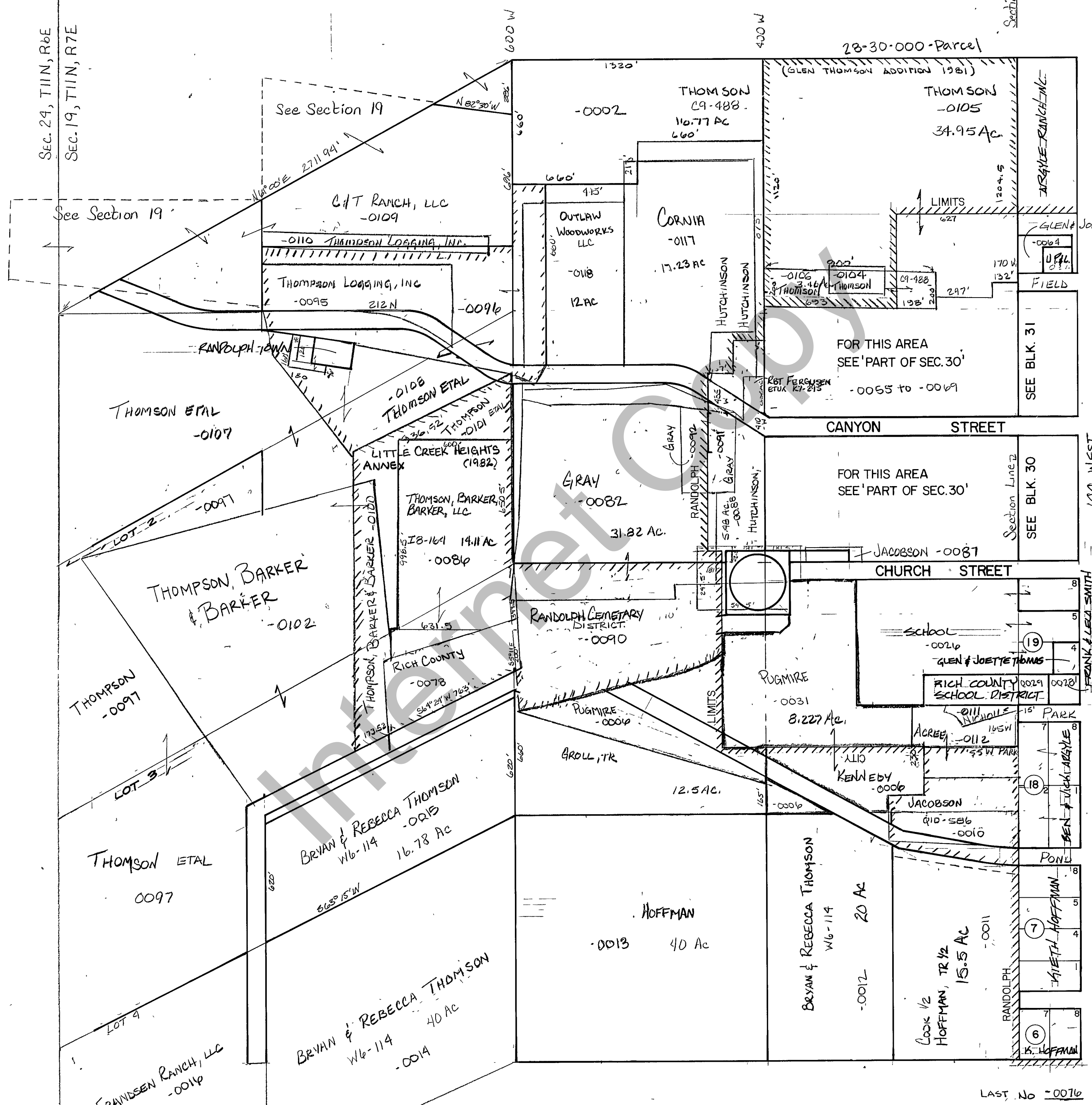


THIS PLAT IS MADE SOLELY FOR THE PURPOSE OF ASSISTING IN LOCATING THE LAND, AND THE RECORDER ASSUMES NO LIABILITY FOR VARIATIONS, IF ANY, WITH AN ACTUAL SURVEY.

# RICH COUNTY

## SECTION 30, T.11N., R.7E., S.L.B. & M.

PLAT NO. \_\_\_\_\_  
BOOK \_\_\_\_\_ PAGE \_\_\_\_\_



SEC. 24, T11N, R6E  
SEC. 19, T11N, R7E

Section Line 2000

See Section 19

See Section 19

28-30-000-Parcel

(GLEN THOMPSON ADDITION 1981)

THOMPSON  
C9-488  
110.77 AC  
660'

THOMPSON  
-0105  
34.95 AC

CHIT RANCH, LLC  
-0109

-0110 THOMPSON LOGGING, INC.

THOMPSON LOGGING, INC  
-0095 212N

OUTLAW  
WOODWORKS  
LLC  
-0118  
12 AC

CORNIA  
-0117  
17.23 AC

-0106 THOMPSON  
-0104 THOMPSON

FOR THIS AREA  
SEE 'PART OF SEC. 30'

-0055 to -0069

THOMPSON ETAL  
-0107

-0108 THOMPSON ETAL

LITTLE CREEK HEIGHTS  
ANNEX (1982)

THOMPSON, BARKER,  
BARKER, LLC  
18-164 14.11 AC  
-0081p

GRAY  
-0082  
31.82 AC.

THOMPSON, BARKER  
& BARKER  
-0102

THOMPSON  
-0097

RANDOLPH CEMETARY  
DISTRICT  
-0090

JACOBSON -0087  
CHURCH STREET

SCHOOL  
-0021p  
GLEN & JOETTE THOMAS

RICH COUNTY  
SCHOOL DISTRICT  
-0029 0028

PUGMIRE  
-0031  
8.227 AC.

GROLL, TR  
-001p  
12.5 AC.

KENWEDY  
-0006

JACOBSON  
910-586  
-0010

THOMPSON ETAL  
0097

BRYAN & REBECCA THOMPSON  
W6-114 16.78 AC  
-0015

HOFFMAN  
-0013 40 AC

BRYAN & REBECCA THOMPSON  
W6-114 20 AC  
-0012

Book 1/2  
HOFFMAN, TR 1/2  
15.5 AC  
-0011

FRANSEN RANCH, LLC  
-0014p

BRYAN & REBECCA THOMPSON  
W6-114 40 AC  
-0014

LAST No -0016

REVISIONS				
RANDOLPH CITY SURVEY				Section 30 T.11N. R. 7E
drawn by GP		date DEC 1978		book page
scale 1"=400'				