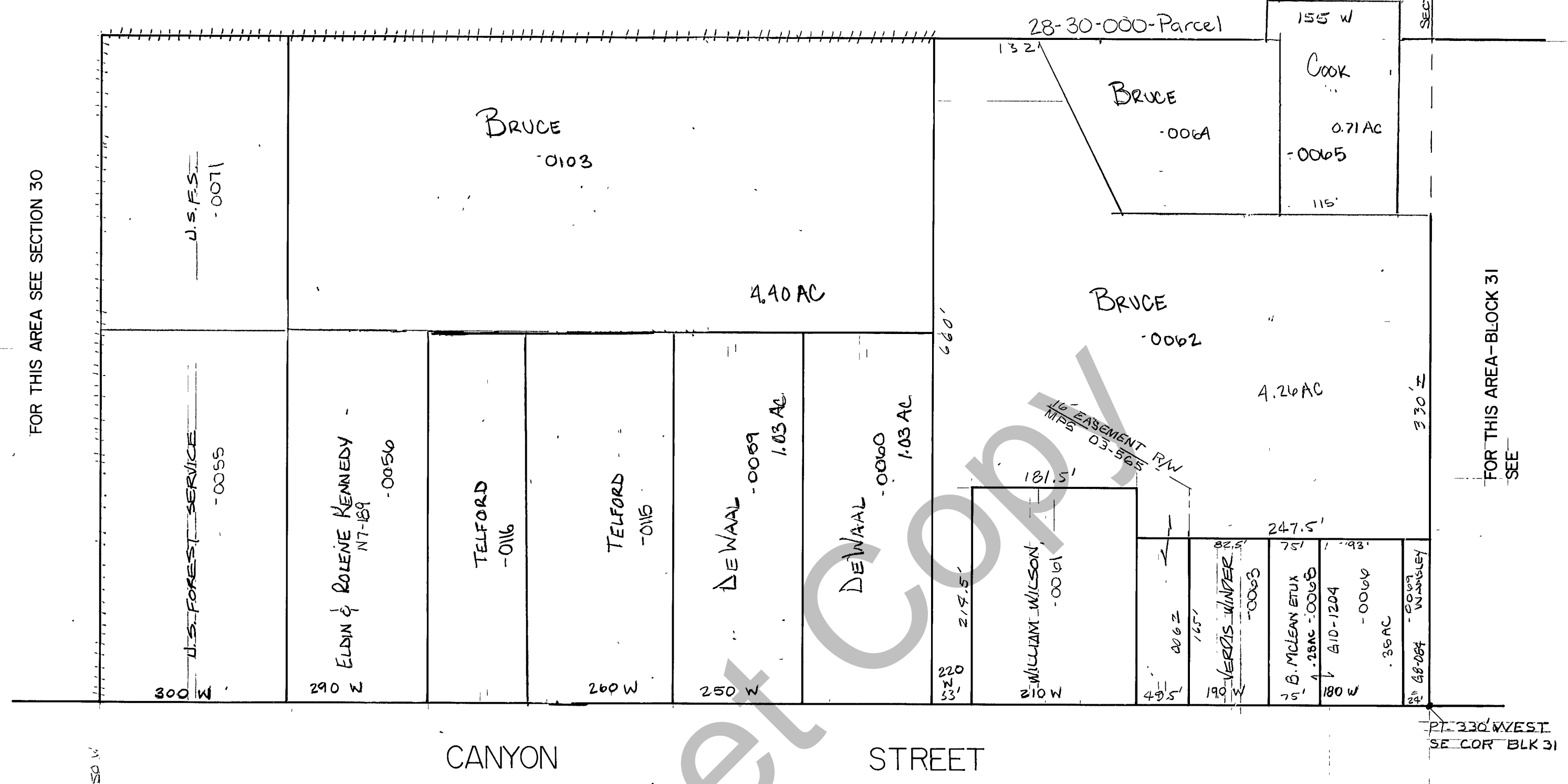


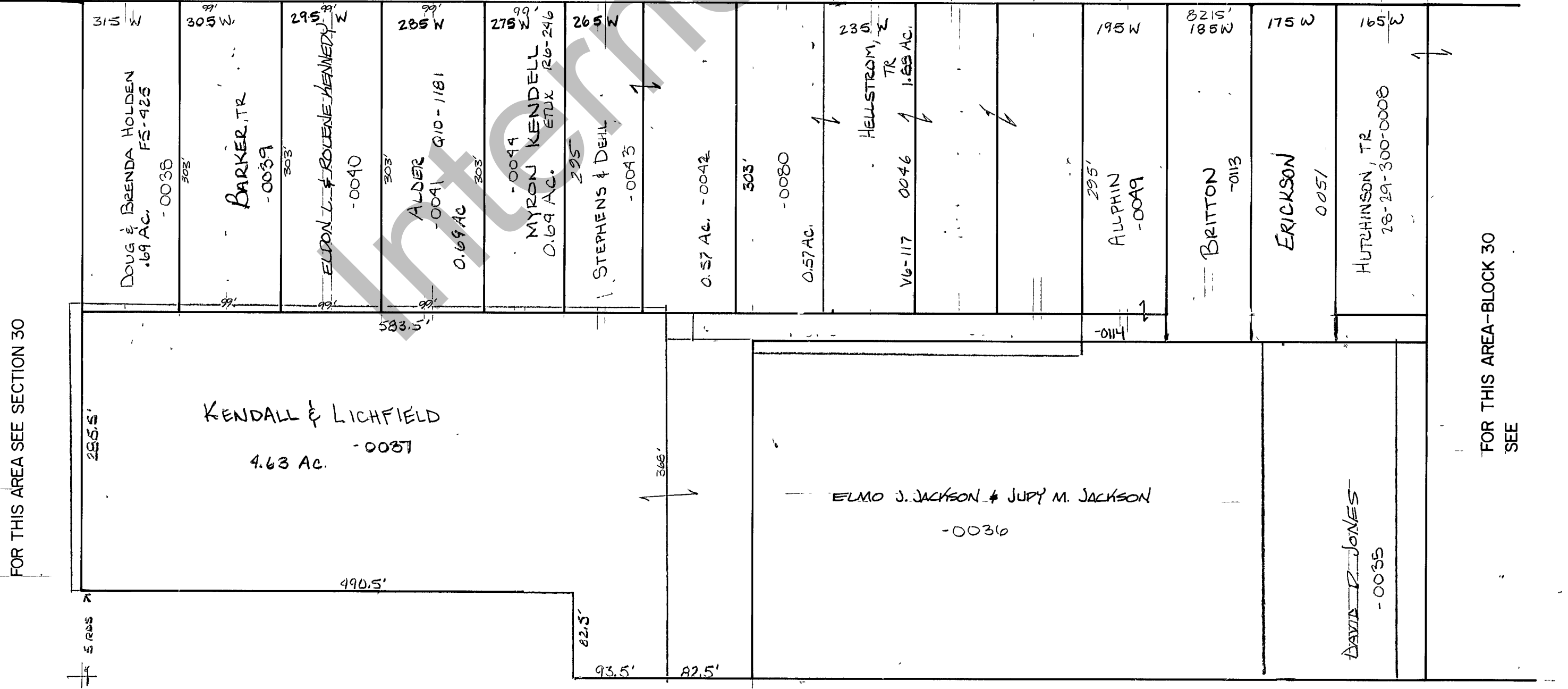
PART OF SEC. 30, T.11N., R.7E., S.L.B.&M.  
 RICH COUNTY

FOR THIS AREA SEE SECTION 30



FOR THIS AREA - BLOCK 31  
 SEE

CANYON STREET



FOR THIS AREA - BLOCK 30  
 SEE

THIS PLAT IS MADE SOLELY FOR THE PURPOSE OF ASSISTING IN LOCATING THE LAND, AND THE RECORDER ASSUMES NO LIABILITY FOR VARIATIONS, IF ANY, WITH AN ACTUAL SURVEY.

REVISIONS		

RANDOLPH CITY SURVEY

Section 30 T.11N. R.7E.	book	page
drawn by GP	date DEC 1978	scale 1" = 100'