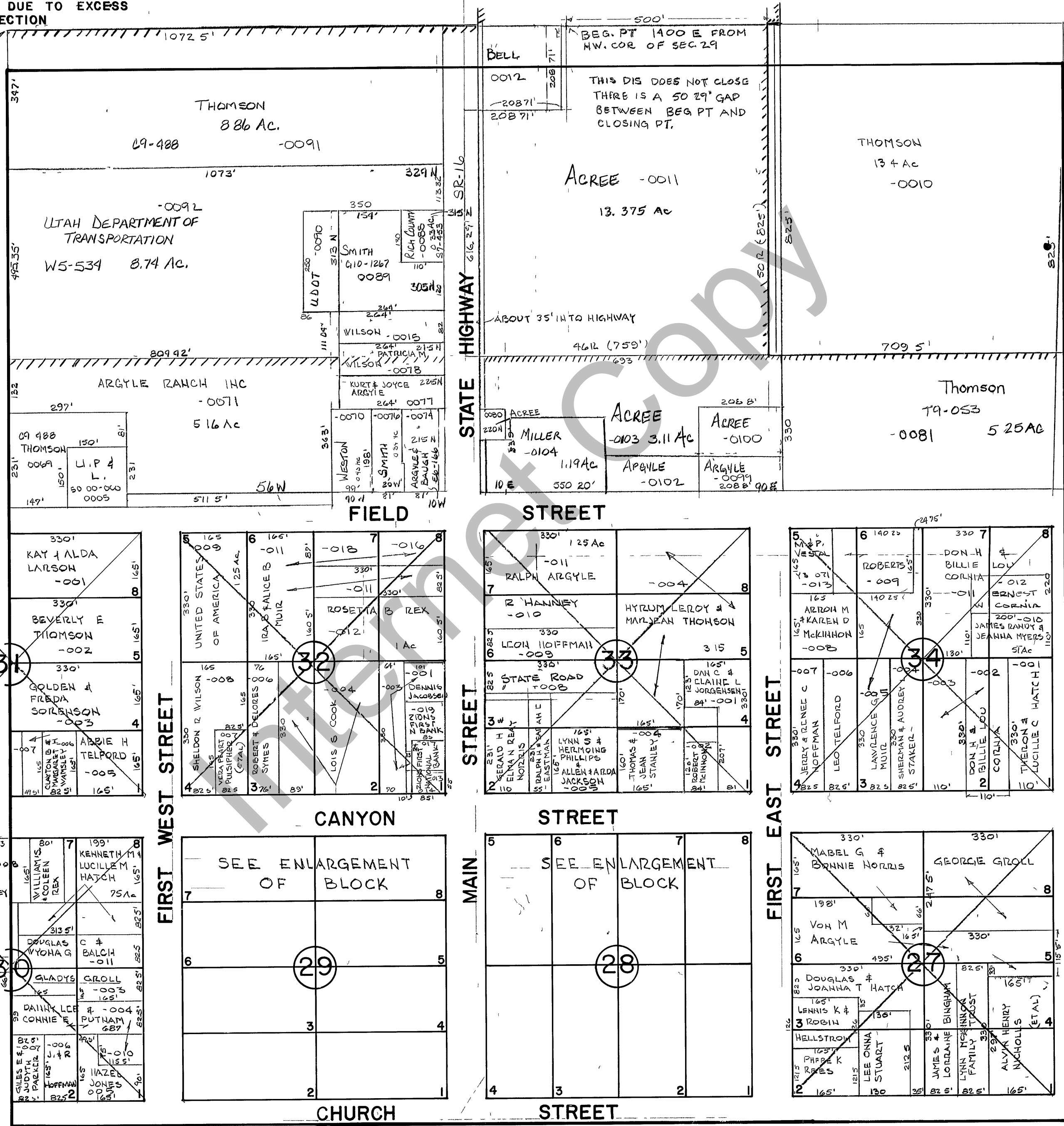


RICH COUNTY

NW 1/4 SECTION 29 T. 11 N. R. 7 E., S.L.B. & M.
 RANDOLPH CITY SURVEY

NOTE:
 ASSUMED NW CORNER OF
 SECTION 29 T 11 N R 7 E
 PROBABLY DUE TO EXCESS
 LAND IN SECTION



REVISIONS	

THIS PLAT IS MADE SOLELY FOR THE PURPOSE OF ASSISTING IN LOCATING THE LAND, AND THE RECORDER ASSUMES NO LIABILITY FOR VARIATIONS IF ANY, WITH AN ACTUAL SURVEY

NW 1/4 Section 29 T 11 N R 7 E		book	page
drawn by BHU	date 4/24/81	scale 1" = 200'	