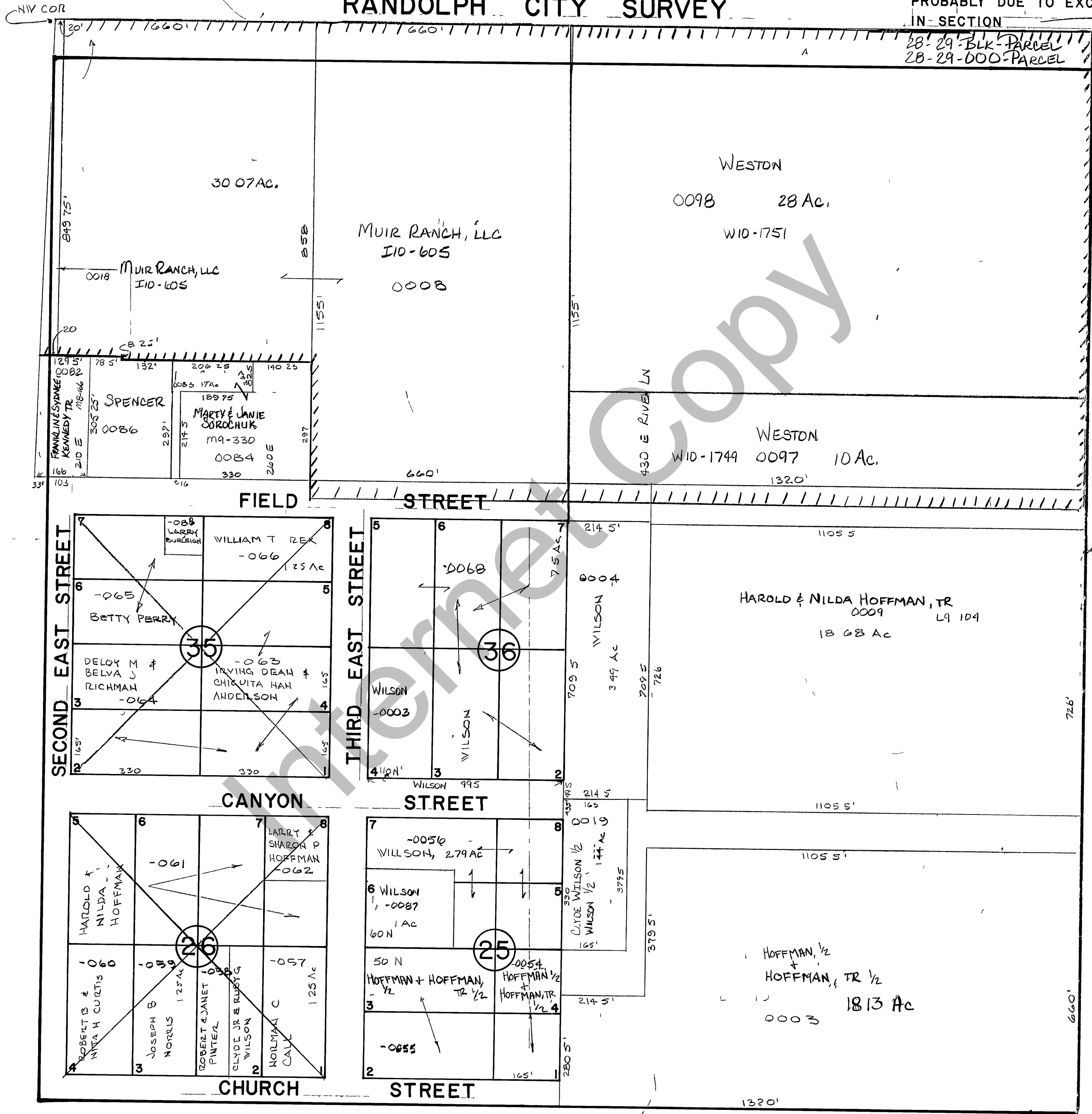


RICH COUNTY
 SCALE 1 INCH = 200 FEET
NE 1/4 SECTION 29 T. 11 N. R. 7 E., S.L.B. & M.
RANDOLPH CITY SURVEY

NOTE
 ASSUMED NE CORNER OF SECTION 29, T 11 N. R 7 E PROBABLY DUE TO EXCESS LAND IN SECTION



REVISIONS	

THIS PLAT IS MADE SOLELY FOR THE PURPOSE OF ASSISTING IN LOCATING THE LAND AND THE RECORDER AS SUMES NO LIABILITY FOR VARIATIONS, IF ANY, WITH AN ACTUAL SURVEY

NE 1/4 Section 29 T. 11 N. R. 7 E.	book	page
drawn by B.H.U.	date 3/19/21	scale 1" = 200'