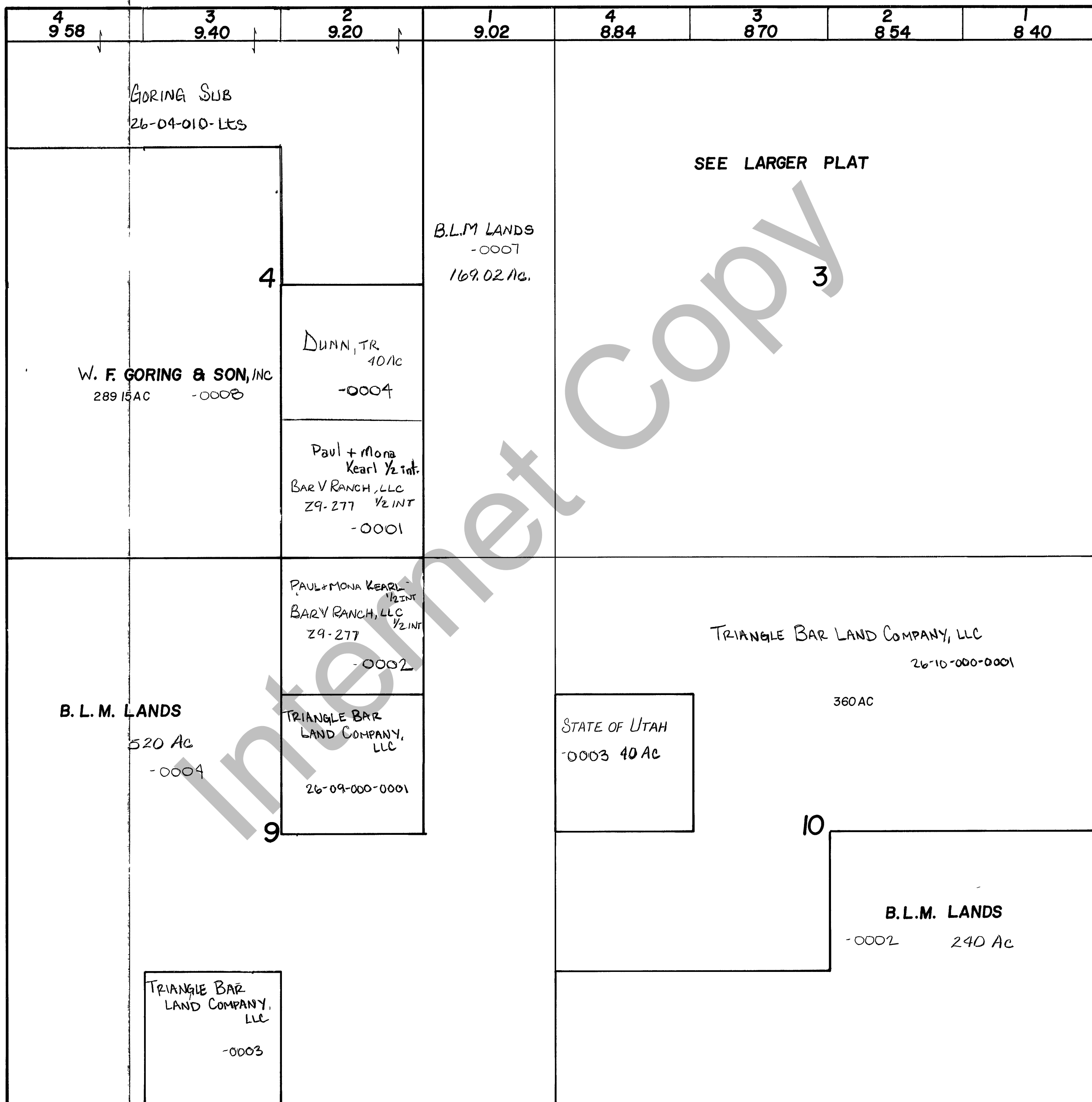


RICH COUNTY

SECTIONS T. 11 N.R. 5 E., S.L.B.&M. 3, 4, 9, 10

26-SEC. - 000 - Parcel



4 9.58	3 9.40	2 9.20	1 9.02	4 8.84	3 8.70	2 8.54	1 8.40
GORING SUB 26-04-010-LTS				SEE LARGER PLAT			
W. F. GORING & SON, INC 289.15 AC -0008				B.L.M LANDS -0007 169.02 AC.			
4				3			
DUNN, TR 40 AC -0004							
Paul + Mona Kearl 1/2 int. BAR V RANCH, LLC 29-277 1/2 INT -0001							
B. L. M. LANDS 520 AC -0004				TRIANGLE BAR LAND COMPANY, LLC 26-10-000-0001 360 AC			
9				10			
PAUL + MONA KEARL 1/2 INT BARY RANCH, LLC 29-277 -0002				STATE OF UTAH -0003 40 AC			
TRIANGLE BAR LAND COMPANY, LLC 26-09-000-0001				B. L. M. LANDS -0002 240 AC			
TRIANGLE BAR LAND COMPANY, LLC -0003							

REVISIONS		

THIS PLAT IS MADE SOLELY FOR THE PURPOSE OF ASSISTING IN LOCATING THE LAND, AND THE RECORDER ASSUMES NO LIABILITY FOR VARIATIONS, IF ANY, WITH AN ACTUAL SURVEY

43 Section 9 T. 11 N. R 5	book page
drawn by MVH date 11-80	scale 1"=800'