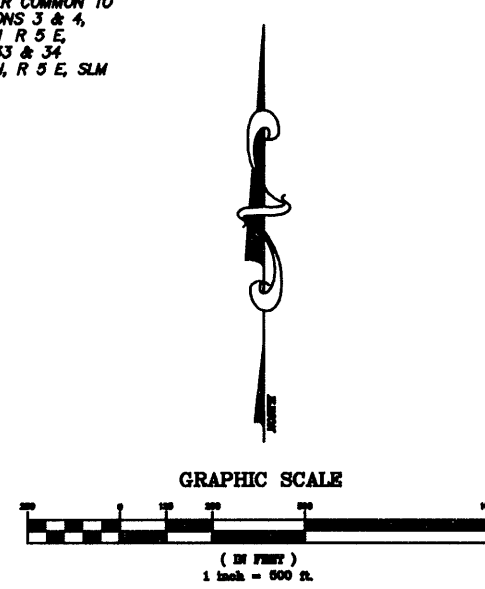
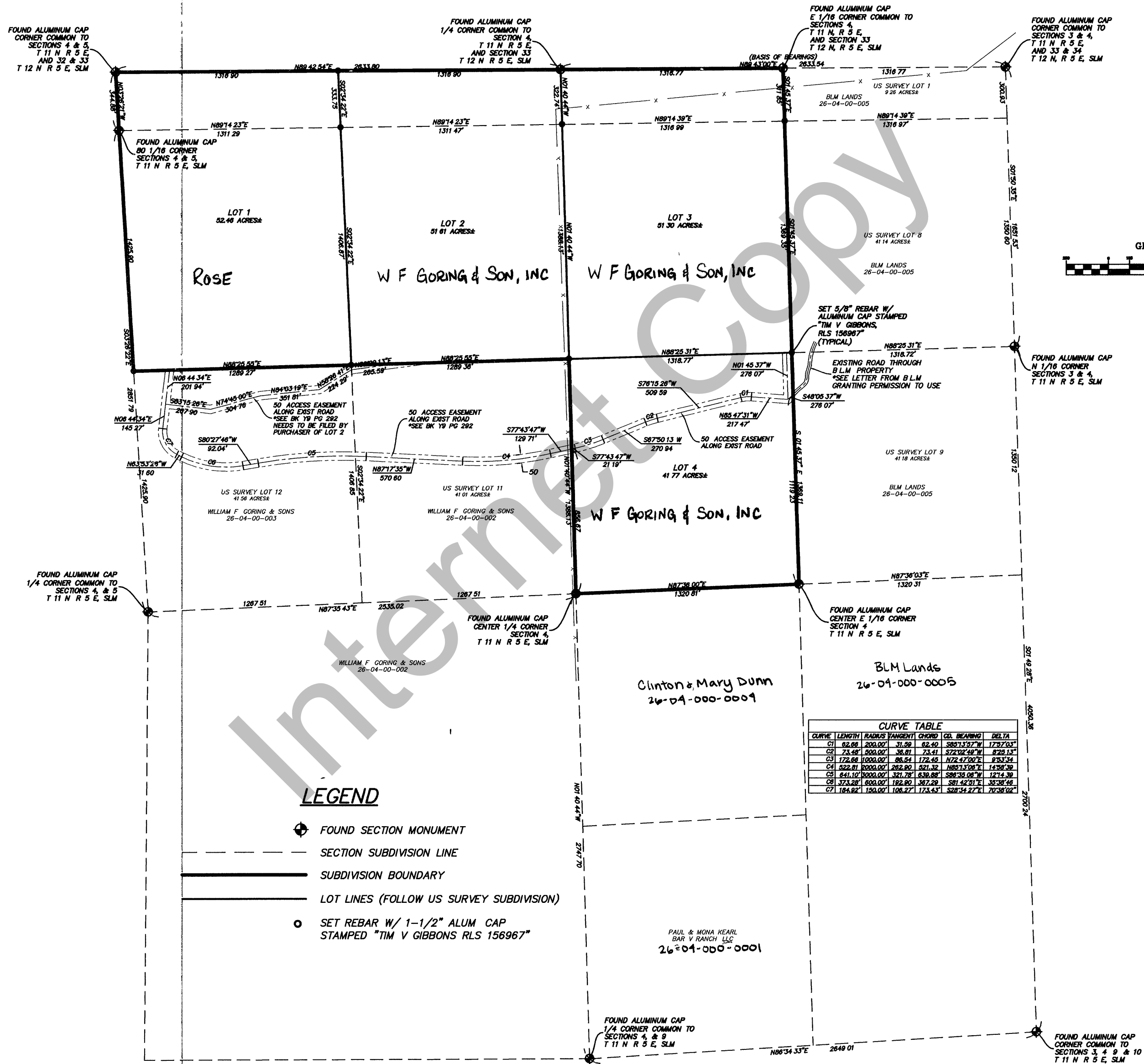


RICH COUNTY
GORING SUBDIVISION
 ALL OF LOTS 10, 2, 3, AND 4, SECTION 4,
 TOWNSHIP 11 NORTH, RANGE 5 EAST, SALT LAKE MERIDIAN
 RICH COUNTY, UTAH
 NOVEMBER 2005



LEGEND

- ⊕ FOUND SECTION MONUMENT
- - - SECTION SUBDIVISION LINE
- SUBDIVISION BOUNDARY
- LOT LINES (FOLLOW US SURVEY SUBDIVISION)
- SET REBAR W/ 1-1/2" ALUM CAP STAMPED "TIM V GIBBONS RLS 156967"

Clinton & Mary Dunn
 26-04-000-0009

BLM Lands
 26-04-000-0005

PAUL & MONA KEARL
 BAR V RANCH LLC
 26-04-000-0001

26 04-010-LES

NO	REVISION	DATE