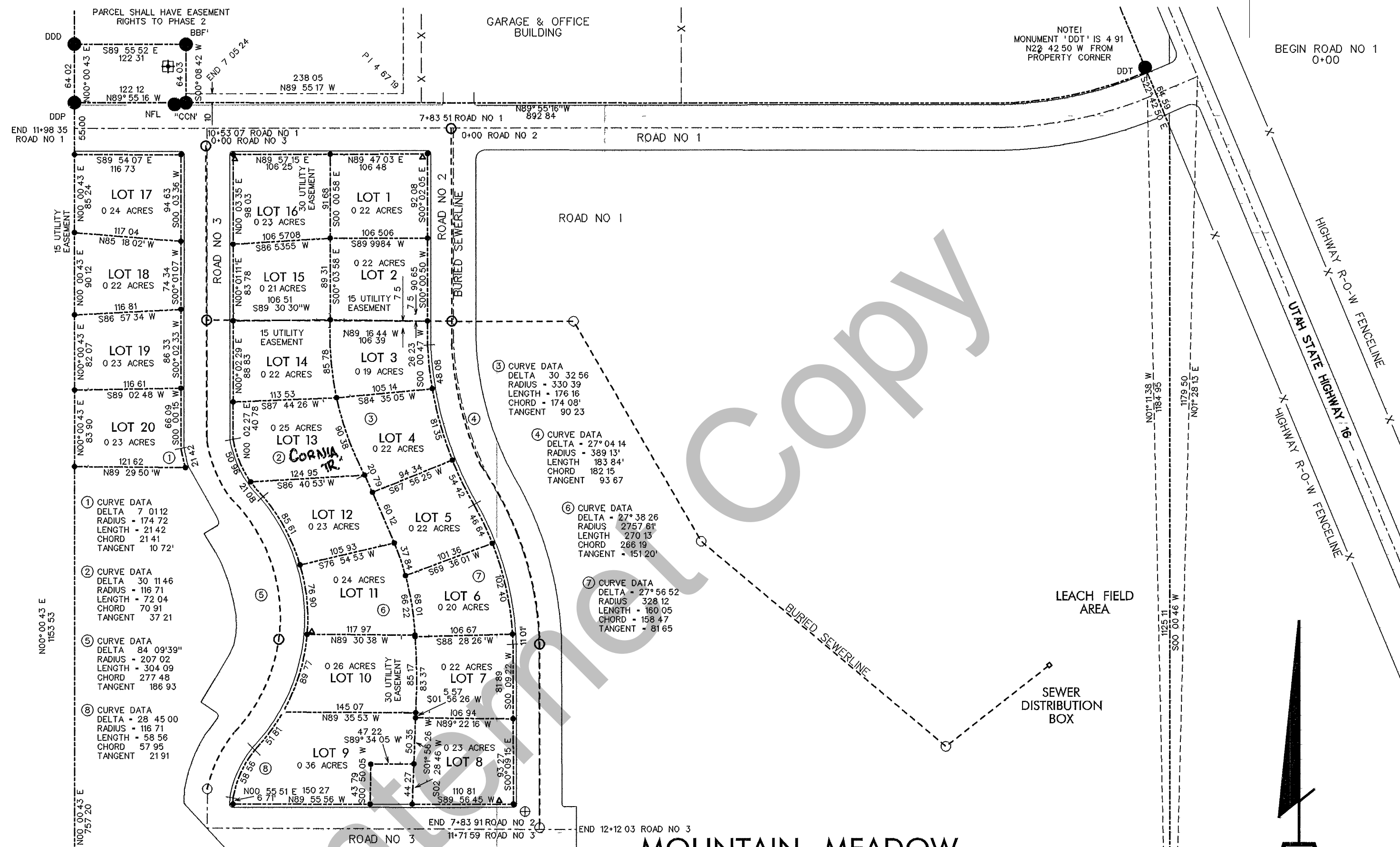


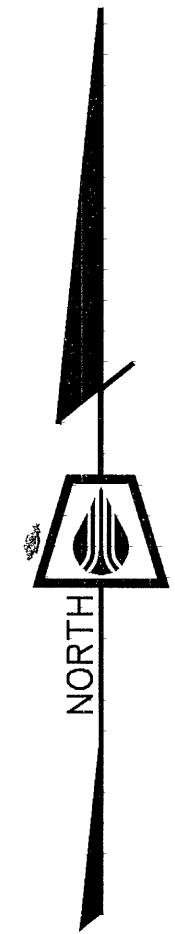
RICH COUNTY



MOUNTAIN MEADOW SUBDIVISION PHASE 2

TOTAL AREA PHASE 2
 31 78 ACRES
 TOTAL COMMON AREA
 27 14 ACRES
 TOTAL LOTTED AREA
 4 64 ACRES

TABULATIONS
 ROAD
 3194 29 FEET
 193 59 RODS
 0 61 MILES
 SEWERLINE
 2567 63 FEET
 155 61 RODS
 0 49 MILES
 WATERLINE EASEMENT FROM PHASE 1
 705 24 FEET
 42 74 RODS
 0 13 MILES



DRAWN 5/30/96 CRW
 SURVEYED 5/15/96 FH
QUESTAR PIPELINE COMPANY

REVISION		
NO	DESCRIPTION	BY/DATE

**MOUNTAIN MEADOW
 SUBDIVISION
 PHASE 2**

SECTION 20
 T 10 N, R 7 E, S 1 B & M
 RICH COUNTY, UTAH

BOOK _____ PAGE _____
 SCALE 1" = 100'