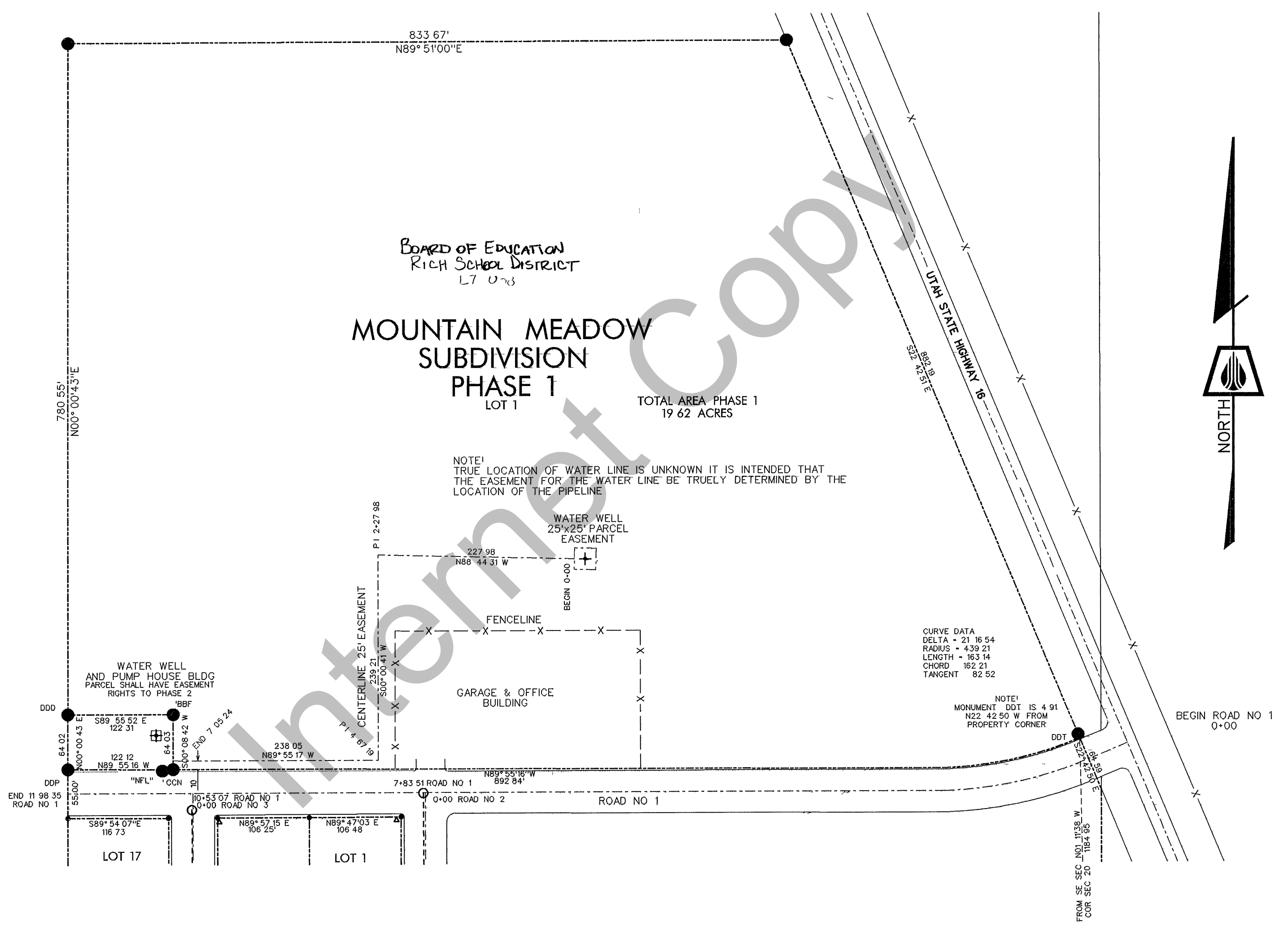


RICH COUNTY



DRAWN 5/30/96 CRW
 SURVEYED 5/15/96 FH



QUESTAR
 PIPELINE COMPANY

REVISION		
NO	DESCRIPTION	BY/DATE

MOUNTAIN MEADOW
 SUBDIVISION
 PHASE 1

SECTION 20
 T 10 N, R 7 E, SLB & M
 RICH COUNTY, UTAH

BOOK _____ PAGE _____
 SCALE 1" = 100'