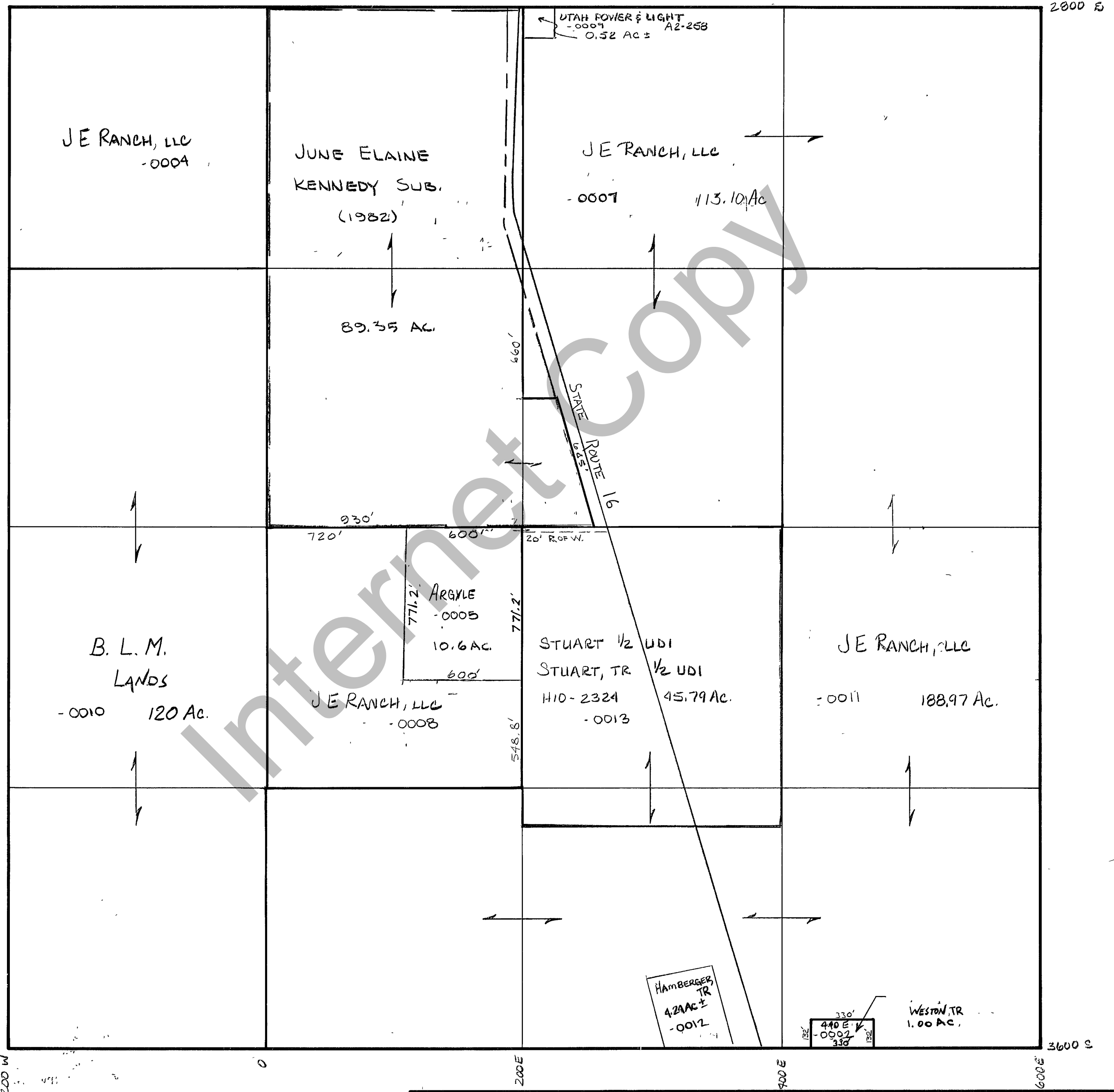


RICH COUNTY  
SECTION 17 , T. 10 N.R. 7 E., S.L.B.&M.

SERIAL NO.= 24-17-000-PARCEL



REVISIONS		

THIS PLAT IS MADE SOLELY FOR THE PURPOSE OF ASSISTING IN LOCATING THE LAND, AND THE RECORDER ASSUMES NO LIABILITY FOR VARIATIONS, IF ANY, WITH AN ACTUAL SURVEY.

Section 17 T. 10 N. R. 7 E book page \_\_\_\_\_  
 drawn by DW date 11-79 scale 1"=400'