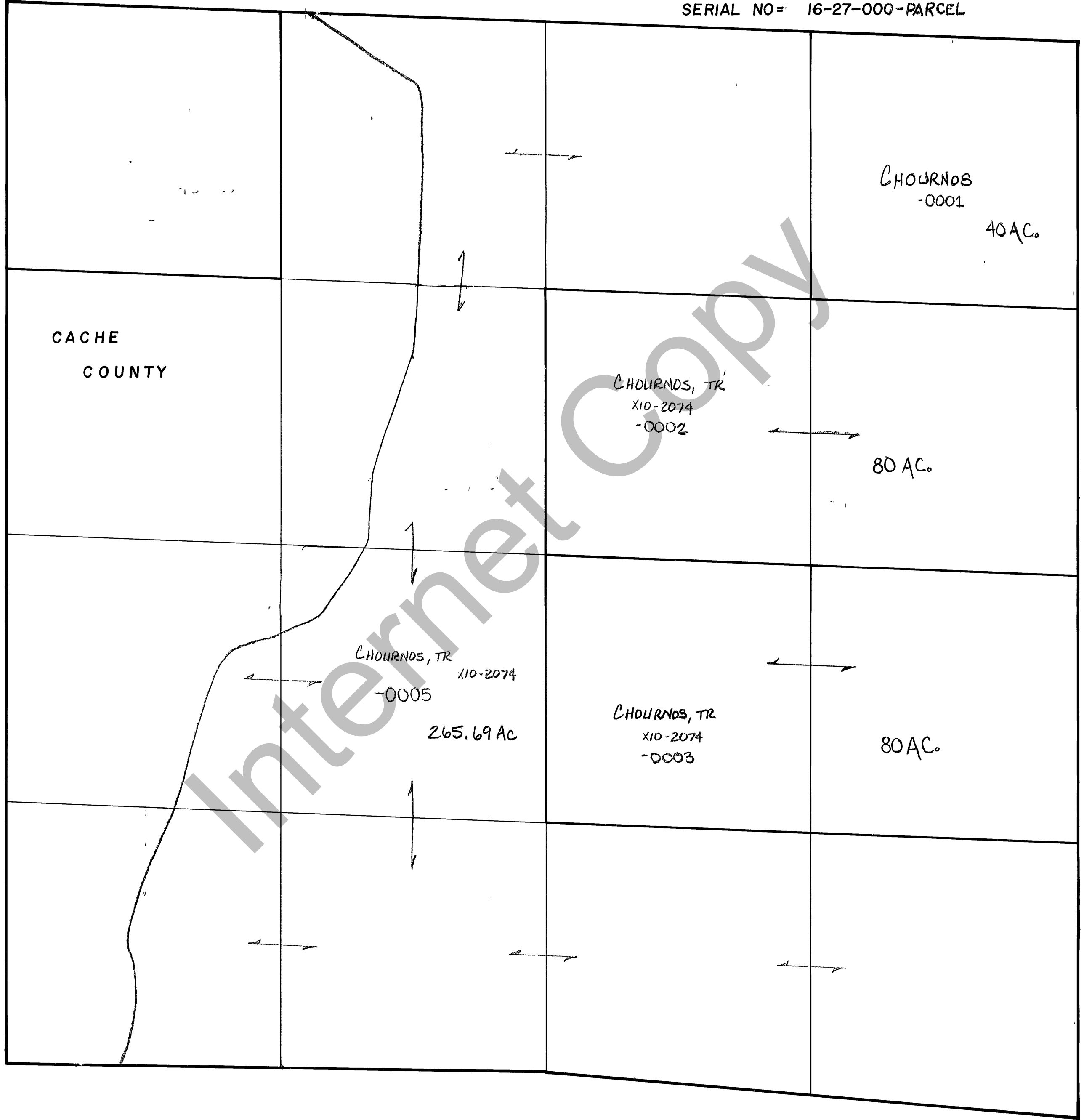


RICH COUNTY
 SECTION 27, T. 9 N. R. 4 E., S.L.B. & M.

SERIAL NO= 16-27-000-PARCEL



REVISIONS		

THIS PLAT IS MADE SOLELY FOR THE PURPOSE OF ASSISTING IN LOCATING THE LAND, AND THE RECORDER ASSUMES NO LIABILITY FOR VARIATIONS IF ANY, WITH AN ACTUAL SURVEY.