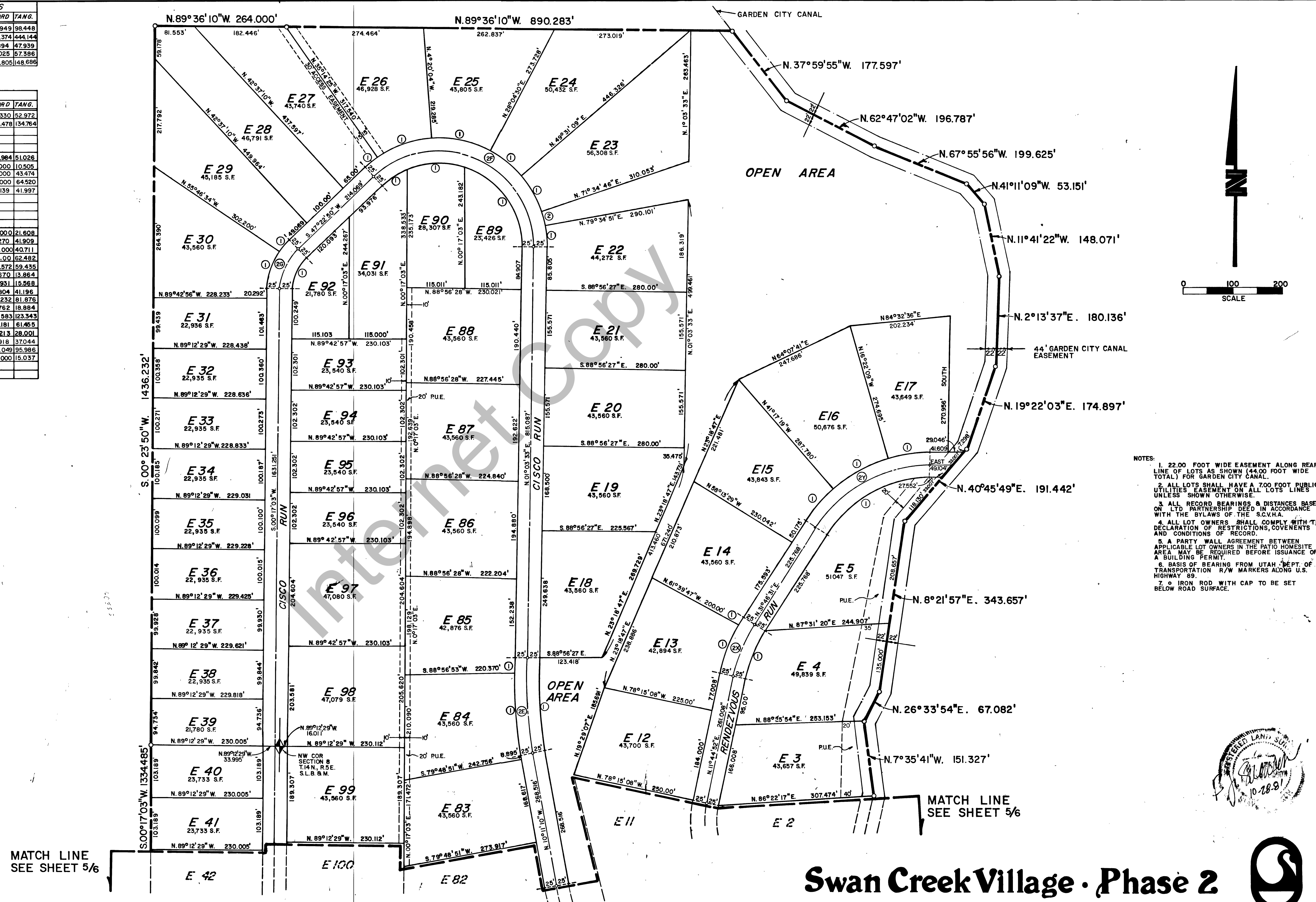


CURVE DATA-ROADS					
CURVE	DELTA	RADIUS	ARC	CHORD	TANG.
2E	11°14'42"	1000.00	196.263	195.949	98.448
2F	33°40'43"	190.00	443.296	349.374	444.144
2G	47°05'47"	110.00	90.418	87.894	47.339
2X	20°01'39"	325.00	113.602	113.025	57.386
2Y	58°13'30"	267.000	271.330	259.805	148.686

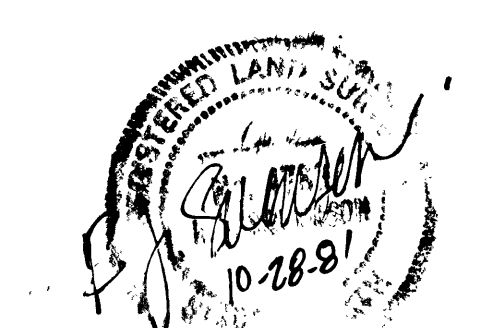
CURVE DATA-LOTS					
LOT	DELTA	RADIUS	ARC	CHORD	TANG.
E4-1	20°01'39"	300.00	104.863	104.330	52.972
E5-1	58°13'30"	242.000	245.924	235.478	134.764

E13-1	16°35'21"	350.00	101.338	100.984	51.026
E14-1	8°26'18"	350.00	21.003	21.000	10.505
E15-1	16°56'11"	292.000	86.314	86.000	43.474
E16-1	24°55'10"	292.000	126.999	126.000	64.520
E17-1	16°22'09"	292.000	83.423	83.139	41.997

E22-1	11°28'42"	215.000	43.072	43.000	21.608
E23-1	22°03'37"	215.00	82.790	82.270	41.909
E24-1	21°26'40"	215.00	80.469	80.000	40.711
E25-1	32°24'34"	215.00	121.615	120.000	62.482
E26-1	30°54'21"	215.00	115.973	114.572	59.435
E27-1	7°22'45"	215.00	27.690	27.670	13.864
E29-1	13°09'23"	135.000	30.999	30.931	15.568
E30-1	33°56'22"	135.000	79.968	79.804	41.196
E31-1	9°08'03"	1025.000	163.405	163.232	81.876
E32-1	2°06'39"	1025.000	37.764	37.762	18.884
E33-1	73°33'32"	165.000	211.834	197.583	123.343
E34-1	40°51'23"	165.000	117.658	115.181	61.465
E35-1	19°21'48"	165.000	55.474	55.213	28.001
E36-1	47°05'48"	165.000	69.869	67.918	37.044
OP AR-1	11°14'42"	875.000	191.356	191.049	95.986
OP AR-2	8°00'05"	215.000	30.024	30.000	15.037



- NOTES:
- 22.00 FOOT WIDE EASEMENT ALONG REAR LINE OF LOTS AS SHOWN (44.00 FOOT WIDE TOTAL) FOR GARDEN CITY CANAL.
  - ALL LOTS SHALL HAVE A 700 FOOT PUBLIC UTILITIES EASEMENT ON ALL LOTS LINES UNLESS SHOWN OTHERWISE.
  - ALL RECORD BEARINGS & DISTANCES BASED ON LTD PARTNERSHIP DEED IN ACCORDANCE WITH THE BYLAWS OF THE SCVLA.
  - ALL LOT OWNERS SHALL COMPLY WITH THE DECLARATION OF RESTRICTIONS, COVENANTS AND CONDITIONS OF RECORD.
  - A PARTY WALL AGREEMENT BETWEEN APPLICABLE LOT OWNERS IN THE PATIO HOMESITE AREA MAY BE REQUIRED BEFORE ISSUANCE OF A BUILDING PERMIT.
  - BASES OF BEARING FROM UTAH DEPT. OF TRANSPORTATION R/W MARKERS ALONG U.S. HIGHWAY 89.
  - IRON ROD WITH CAP TO BE SET BELOW ROAD SURFACE.



# Swan Creek Village - Phase 2

	<b>P/S ASSOCIATES, INC.</b> ENGINEERS AND SURVEYORS 307 WEST 200 SOUTH ST. SUITE 5002 SALT LAKE CITY, UTAH, 84101 PHN: (801) 532-7681 P/S NO. 56-09-10 9-15-80 J.B.	<b>PLANNING COMMISSION</b> APPROVED THIS 27 DAY OF August A.D. 1982 BY THE RICH COUNTY PLANNING COMMISSION. <i>D. Earl Bell</i> CHAIRMAN: RICH CNTY. PLANNING COMM.	<b>BOARD OF HEALTH</b> APPROVED THIS 27 DAY OF August A.D. 1982 BY THE BEAR RIVER DISTRICT HEALTH DEPT.	<b>ENGINEER'S CERTIFICATE</b> I HEREBY CERTIFY THAT THIS OFFICE HAS EXAMINED THIS PLAN AND IT IS CORRECT IN ACCORDANCE WITH INFORMATION ON FILE IN THIS OFFICE. DATE 10-27-82 RICH COUNTY ENGINEER	<b>APPROVAL AS TO FORM</b> APPROVED AS TO FORM THIS 2 DAY OF December A.D. 1982 <i>Richard D. Tomlin</i> COUNTY ATTORNEY	<b>COUNTY COMMISSION</b> PRESENTED TO THE BOARD OF COMMISSIONERS OF RICH COUNTY THIS 6 DAY OF December A.D. 1982 AT WHICH TIME THIS SUBDIVISION WAS APPROVED AND ACCEPTED. <i>James B. Quinn Louis Stewart</i> ATTEST: COUNTY CLERK COUNTY COMMISSION	<b>SHEET NO.</b> 6/6	<b>RECORDED</b> STATE OF UTAH, COUNTY OF RICH, RECORDED AND FILED AT THE REQUEST OF Swan Creek Village, Inc. DATE Dec. 09, 1982 TIME 2:27 PM BOOK 84 PAGE 204 \$295.00 <i>Debra Lee Jones</i> RICH COUNTY RECORDER
--	--	--	--	--	---	--	-------------------------	---