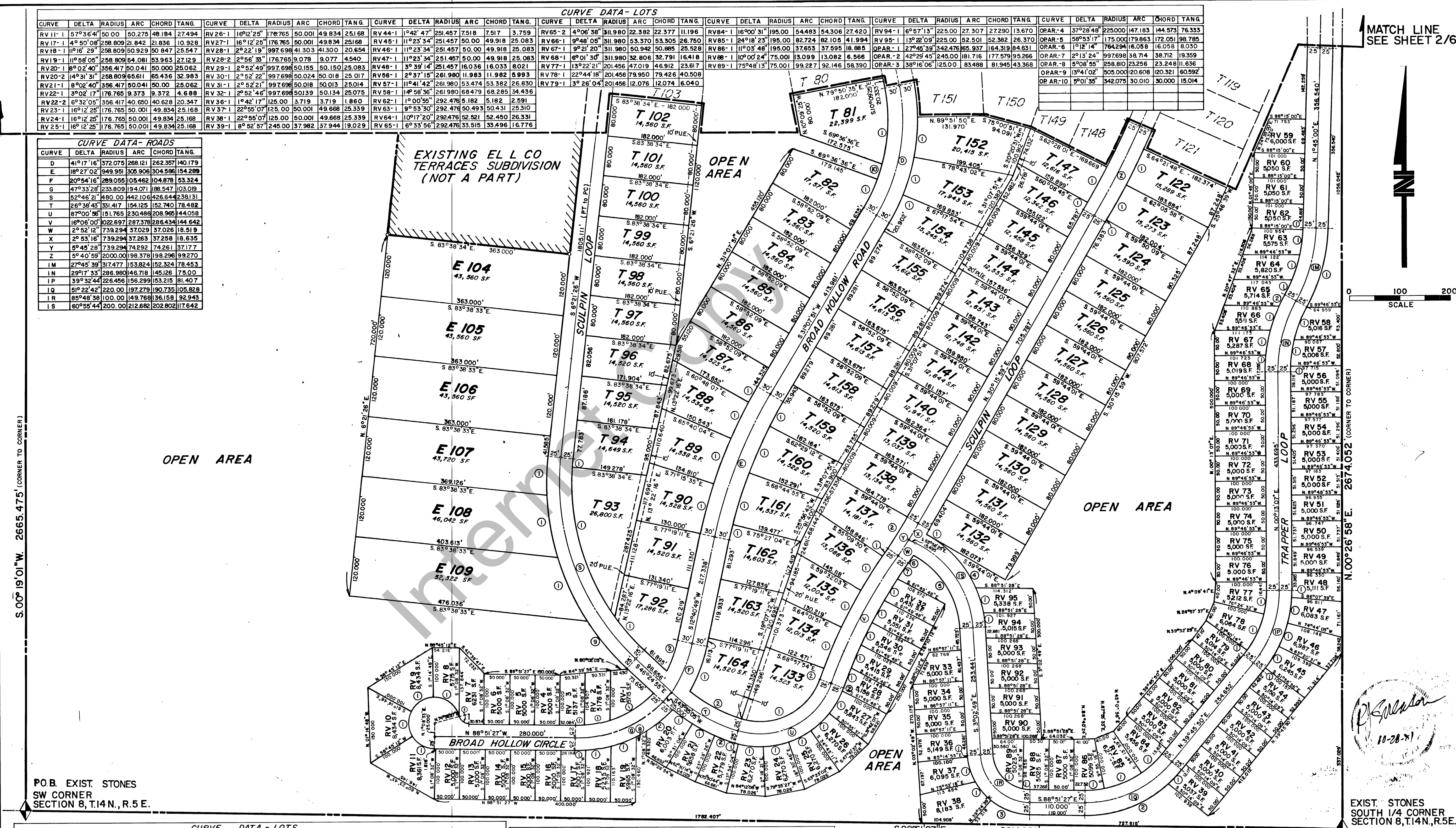


CURVE DATA - LOTS																																									
CURVE	DELTA	RADIUS	ARC	CHORD	TANG.	CURVE	DELTA	RADIUS	ARC	CHORD	TANG.	CURVE	DELTA	RADIUS	ARC	CHORD	TANG.	CURVE	DELTA	RADIUS	ARC	CHORD	TANG.																		
RV 11-1	57°36'41"	50.00	50.275	48.184	27.494	RV 26-1	16°12'25"	176.765	50.001	49.834	251.68	RV 44-1	1°42'47"	251.457	7516	7517	3.759	RV 65-2	4°06'38"	311.980	22.382	22.377	11.196	RV 84-1	16°00'31"	195.00	54.483	54.306	27.423	RV 94-1	6°57'13"	225.00	27.307	27.290	13.670	OPAR-4	37°28'48"	225.000	147.183	144.573	76.333
RV 17-1	4°50'08"	288.809	21.842	21.836	10.928	RV 27-1	16°12'25"	176.765	50.001	49.834	251.68	RV 45-1	1°23'34"	251.457	50.00	49.918	25.083	RV 66-1	9°46'05"	311.980	53.370	53.305	26.750	RV 85-1	24°18'23"	195.00	82.774	82.105	41.994	OPAR-5	58°53'17"	175.000	179.863	172.051	98.785						
RV 18-1	1°16'29"	288.809	50.929	50.847	25.647	RV 28-1	2°22'19"	197.696	41.303	41.300	20.654	RV 46-1	1°19'23'34"	251.457	50.00	49.918	25.083	RV 67-1	3°21'20"	311.980	50.942	50.865	25.526	RV 86-1	11°03'48"	195.00	37.653	37.595	18.883	OPAR-6	1°12'14"	764.294	16.058	16.058	8.030						
RV 19-1	1°16'29"	288.809	50.929	50.847	25.647	RV 29-1	2°56'33"	176.765	9.078	9.077	4.540	RV 47-1	1°19'23'34"	251.457	50.00	49.918	25.083	RV 68-1	6°01'32"	311.980	32.806	32.791	16.418	RV 87-1	10°00'24"	175.000	13.089	13.082	6.566	OPAR-7	2°13'24"	997.696	38.714	38.712	19.359						
RV 20-1	1°16'29"	288.809	50.929	50.847	25.647	RV 30-1	2°52'22"	197.696	50.024	50.018	25.017	RV 48-1	3°37'14"	251.457	16.036	16.033	8.021	RV 77-1	13°22'21"	201.456	47.019	46.912	23.617	OPAR-8	5°08'55"	258.810	23.256	23.248	11.636												
RV 21-1	8°02'40"	356.417	50.041	50.00	25.062	RV 31-1	2°52'21"	197.696	50.018	50.013	25.014	RV 49-1	1°00'55"	292.476	5.182	5.182	2.591	RV 78-1	22°44'18"	201.456	79.500	79.426	40.508	OPAR-9	13°41'02"	505.000	20.608	20.321	10.592												
RV 22-1	3°02'17"	176.765	9.373	9.372	4.688	RV 32-1	2°52'46"	197.696	50.039	50.034	25.035	RV 50-1	1°00'55"	292.476	5.182	5.182	2.591	RV 79-1	3°26'04"	201.456	12.076	12.074	6.040	OPAR-10	9°01'35"	342.075	30.010	30.000	15.014												
RV 23-1	16°12'25"	176.765	50.001	49.834	25.168	RV 33-1	1°42'17"	125.00	3.719	3.719	1.860	RV 51-1	1°00'55"	292.476	5.182	5.182	2.591																								
RV 24-1	16°12'25"	176.765	50.001	49.834	25.168	RV 34-1	22°55'07"	125.00	50.001	49.668	25.339	RV 52-1	1°00'55"	292.476	5.182	5.182	2.591																								
RV 25-1	16°12'25"	176.765	50.001	49.834	25.168	RV 35-1	8°52'57"	245.00	57.982	57.944	19.029	RV 53-1	6°33'56"	292.476	33.515	33.496	16.776																								

CURVE DATA - ROADS					
CURVE	DELTA	RADIUS	ARC	CHORD	TANG.
D	41°17'16"	372.075	268.121	262.357	140.179
E	18°27'02"	349.951	305.908	304.596	154.299
F	20°54'16"	289.055	105.462	104.878	53.324
G	47°33'28"	233.809	194.071	188.547	103.019
H	52°46'21"	480.00	442.106	426.644	238.131
I	26°38'43"	331.417	154.125	152.740	78.482
U	87°00'56"	151.765	230.486	208.960	44.058
V	16°06'00"	302.697	287.378	286.434	144.642
W	25°52'12"	739.294	370.219	370.218	181.519
X	25°53'16"	739.294	372.653	372.588	181.635
Y	5°45'28"	739.294	74.292	74.261	37.177
Z	5°40'59"	2000.00	198.378	198.296	99.270
IM	27°45'39"	317.477	153.824	152.324	78.453
IN	29°17'33"	286.980	146.718	145.126	75.00
IP	39°32'44"	226.456	156.299	153.215	81.407
IQ	51°22'42"	220.00	197.279	190.735	105.828
IR	85°48'38"	100.00	149.788	136.158	92.943
IS	60°55'44"	200.00	212.682	202.802	117.642



CURVE DATA - LOTS																													
CURVE	DELTA	RADIUS	ARC	CHORD	TANG.	CURVE	DELTA	RADIUS	ARC	CHORD	TANG.	CURVE	DELTA	RADIUS	ARC	CHORD	TANG.	CURVE	DELTA	RADIUS	ARC	CHORD	TANG.						
T 81	25°31'14"	342.075	152.366	151.110	77.468	E107	14°12'08"	805.000	125.177	124.857	62.911	RV 1-1	28°34'37"	208.810	104.146	103.070	53.180	RV 7-1	73°23'54"	20.00	25.821	25.905	14.907	RV 9-1	60°00'00"	50.00	52.380	50.00	28.868
T 82	10°44'27"	342.075	64.127	64.033	32.158	E108	14°12'08"	805.000	125.177	124.857	62.911	RV 2-1	14°03'32"	208.810	51.238	51.100	25.747	RV 8-1	75°47'15"	50.00	66.137	61.420	39.915	RV 10-1	60°00'00"	50.00	52.380	50.00	28.868
T 87	1°55'58"	979.951	33.055	33.054	16.529	E109	15°57'13"	505.000	140.615	140.161	70.765	RV 3-1	4°55'19"	208.810	17.938	17.932	8.974	T 159	3°37'03"	919.951	58.082	58.072	29.051	T 160	6°15'43"	919.951	100.844	100.840	50.322
T 88	4°51'30"	979.951	83.225	83.200	41.638	T 91	2°04'44"	455.000	16.510	16.509	8.256	T 13-1	1°06'40"	1047.696	20.315	20.315	10.158	T 146	0°24'44"	979.999	14.213	14.213	7.107	T 161	6°42'09"	919.951	107.618	107.557	53.870
T 89	5°35'30"	979.951	95.638	95.600	47.857	T 92	2°15'49"	2024.999	80.005	80.000	40.008	T 134	4°56'04"	1047.696	90.228	90.200	45.142	T 147	2°16'16"	979.999	80.005	80.000	40.008	T 162	11°25'08"	402.075	80.133	80.000	40.199
T 90	6°03'36"	979.951	103.648	103.600	51.873	T 93	2°15'49"	2024.999	80.005	80.000	40.008	T 135	4°29'47"	1047.696	82.201	82.200	41.132	T 152	11°25'08"	402.075	80.133	80.000	40.199	T 163	11°25'08"	402.075	80.133	80.000	40.199
T 92	11°13'27"	455.000	89.134	88.991	44.710	T 94	0°06'06"	2024.999	36.17	36.17	18.09	T 136	4°22'34"	1047.696	80.019	80.000	40.029	T 153	11°25'08"	402.075	80.133	80.000	40.199	T 164	11°25'08"	402.075	80.133	80.000	40.199
T 93	14°01'51"	259.065	63.437	63.280	31.873	T 95	0°47'40"	764.294	15.996	15.996	7.998	T 137	1°10'56"	1047.696	21.620	21.620	10.810	T 154	6°29'49"	402.075	59.191	59.099	29.629						

P/S ASSOCIATES, INC.
ENGINEERS AND SURVEYORS
307 WEST 200 SOUTH ST., SUITE 5002
SALT LAKE CITY, UTAH, 84101
PHN: (801) 532-7681
P/S NO. 56-09-10 9-15-80 J.B.

PLANNING COMMISSION
APPROVED THIS 30 DAY OF Dec A.D. 1982 BY THE RICH COUNTY PLANNING COMMISSION.
W. Earl Bill
CHAIRMAN: RICH CNTY. PLANNING COMM

BOARD OF HEALTH
APPROVED THIS 27 DAY OF Dec A.D. 1982 BY THE BEAR RIVER DISTRICT HEALTH DEPT.
Quel B. Hoyt

ENGINEER'S CERTIFICATE
I HEREBY CERTIFY THAT THIS OFFICE HAS EXAMINED THIS PLAN AND IT IS CORRECT IN ACCORDANCE WITH INFORMATION ON FILE IN THIS OFFICE.
Richard W. Lombard
DATE: RICH COUNTY ENGINEER

APPROVAL AS TO FORM
APPROVED AS TO FORM THIS 2 DAY OF December A.D. 1982
Richard W. Lombard
COUNTY ATTORNEY

COUNTY COMMISSION
PRESENTED TO THE BOARD OF COMMISSIONERS OF RICH COUNTY THIS 6 DAY OF December A.D. 1982 AT WHICH TIME THIS SUBDIVISION WAS APPROVED AND ACCEPTED.
James A. Stewart
ATTY: COUNTY CLERK COUNTY COMMISSION

SHEET NO.
3/6

RECORDED
STATE OF UTAH, COUNTY OF RICH, RECORDED AND FILED AT THE REQUEST OF Swan Creek Village, Inc.
DATE Dec. 09, 1982 TIME 2:21 PM BOOK 64 PAGE 204
FEE \$ 295
Debra Lee Jones
RICH COUNTY RECORDER

Swan Creek Village - Phase 2

