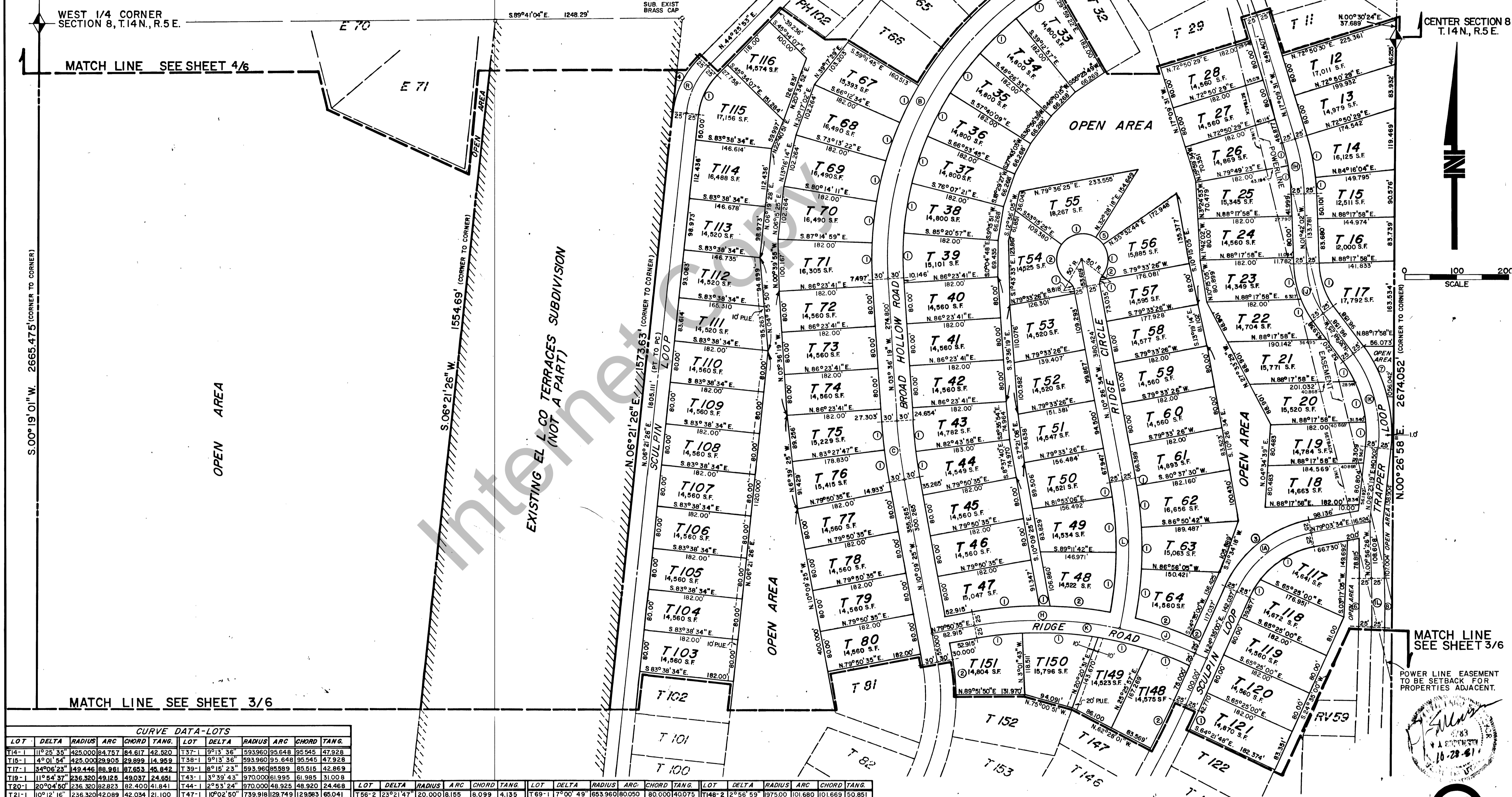


CURVE DATA - ROADS											
CURVE	DELTA	RADIUS	ARC	CHORD	TANG.	CURVE	DELTA	RADIUS	ARC	CHORD	TANG.
B	63°38'57"	623.960	692.786	657.746	366.934	R	38°04'27"	153.139	101.784	99.902	52.841
C	6°33'06"	1000.000	114.350	114.288	57.237	IA	54°28'34"	200.000	190.188	183.076	102.954
H	22°41'27"	714.918	283.128	281.281	143.444	IH	15°27'29"	400.000	107.917	107.590	54.288
J	12°02'59"	714.918	150.361	150.074	75.454	IJ	34°06'23"	174.447	103.843	102.316	53.511
K	34°44'25"	714.918	433.479	426.868	223.633	IK	42°11'44"	261.319	192.449	188.129	100.823
L	22°58'36"	712.264	285.630	283.719	144.760	IL	2°41'26"	2000.000	93.916	93.908	46.967

CURVE DATA - OPEN SPACE											
CURVE	DELTA	RADIUS	ARC	CHORD	TANG.	CURVE	DELTA	RADIUS	ARC	CHORD	TANG.
6	2°41'56"	1975.000	92.742	92.734	46.380						
7	42°11'43"	286.320	210.860	206.127	110.468						
8	2°41'56"	2025.000	95.090	95.081	47.554						



CURVE DATA - LOTS											
LOT	DELTA	RADIUS	ARC	CHORD	TANG.	LOT	DELTA	RADIUS	ARC	CHORD	TANG.
T14-1	11°25'35"	425.000	84.757	84.617	42.520	T37-1	9°13'36"	593.960	95.648	95.545	47.928
T15-1	4°01'54"	425.000	29.905	29.899	14.959	T38-1	9°13'36"	593.960	95.648	95.545	47.928
T17-1	34°06'23"	429.446	88.981	87.653	46.842	T39-1	8°16'23"	593.960	85.589	85.515	42.869
T19-1	11°54'37"	236.320	49.125	49.037	24.681	T43-1	5°39'43"	970.000	81.995	81.985	31.008
T20-1	20°04'50"	236.320	82.823	82.400	41.841	T44-1	2°53'24"	970.000	48.925	48.920	24.469
T21-1	10°12'16"	236.320	42.089	42.034	21.100	T47-1	10°02'50"	739.918	128.749	128.593	65.041
T22-1	14°06'21"	199.447	49.102	48.978	24.676	T48-1	9°40'50"	687.264	116.118	115.880	58.198
T23-1	20°00'03"	199.447	69.623	69.270	35.169	T48-2	9°05'47"	739.918	117.472	117.349	58.860
T25-1	8°28'36"	375.000	55.479	55.428	27.790	T49-1	8°55'12"	687.264	106.996	106.888	53.607
T26-1	8°58'54"	375.000	46.694	46.666	22.875	T50-1	2°19'40"	687.264	27.922	27.920	13.963
T33-1	9°13'36"	593.960	95.648	95.545	47.928	T54-1	49°59'41"	20.000	17.451	16.903	9.325
T34-1	9°13'36"	593.960	95.648	95.545	47.928	T54-2	97°10'51"	50.000	84.806	75.000	56.995
T35-1	9°13'36"	593.960	95.648	95.545	47.928	T55-1	85°43'43"	80.000	74.812	68.026	46.405
T36-1	9°13'36"	593.960	95.648	95.545	47.928	T56-1	174°00'23"	50.000	64.583	60.186	37.682
T38-1	9°13'36"	593.960	95.648	95.545	47.928	T56-2	17°00'49"	653.960	80.090	80.000	40.075
T39-1	9°13'36"	593.960	95.648	95.545	47.928	T148-1	8°57'35"	689.916	103.803	103.762	51.993

LOT	DELTA	RADIUS	ARC	CHORD	TANG.	LOT	DELTA	RADIUS	ARC	CHORD	TANG.
T66-2	23°21'47"	20.000	8.155	8.039	4.135	T69-1	7°00'49"	653.960	80.050	80.000	40.075
T67-1	26°37'54"	20.000	9.296	9.213	4.734	T70-1	7°00'49"	653.960	80.050	80.000	40.075
T68-1	10°04'04"	737.264	13.740	13.740	6.870	T71-1	6°21'20"	653.960	76.540	76.503	36.307
T62-1	6°13'13"	737.264	80.039	80.000	40.059	T75-1	2°55'54"	1030.000	52.703	52.697	26.357
T63-1	6°13'13"	737.264	80.039	80.000	40.059	T76-1	3°37'12"	1030.000	65.078	65.067	32.550
T64-1	7°33'25"	737.264	97.240	97.170	48.891	T115-1	38°04'27"	128.139	85.151	83.593	44.214
T64-2	6°35'46"	739.918	111.012	110.907	55.610	T117-1	40°40'47"	175.000	124.249	121.656	64.873
T67-1	7°00'49"	653.960	80.090	80.000	40.075	T118-1	13°47'48"	175.000	42.139	42.038	21.172
T68-1	6°13'13"	737.264	80.039	80.000	40.059	T119-1	13°32'56"	739.918	20.002	20.002	10.002
T69-1	7°00'49"	653.960	80.090	80.000	40.075	T120-1	10°01'15"	402.075	70.322	70.233	35.251
T70-1	7°00'49"	653.960	80.090	80.000	40.075	T121-1	10°03'12"	2024.999	37.230	37.230	18.616
T71-1	6°21'20"	653.960	76.540	76.503	36.307	T122-1	10°03'12"	2024.999	37.230	37.230	18.616
T72-1	6°21'20"	653.960	76.540	76.503	36.307	T123-1	10°03'12"	2024.999	37.230	37.230	18.616
T73-1	6°21'20"	653.960	76.540	76.503	36.307	T124-1	10°03'12"	2024.999	37.230	37.230	18.616
T74-1	6°21'20"	653.960	76.540	76.503	36.307	T125-1	10°03'12"	2024.999	37.230	37.230	18.616
T75-1	6°21'20"	653.960	76.540	76.503	36.307	T126-1	10°03'12"	2024.999	37.230	37.230	18.616
T76-1	6°21'20"	653.960	76.540	76.503	36.307	T127-1	10°03'12"	2024.999	37.230	37.230	18.616
T77-1	6°21'20"	653.960	76.540	76.503	36.307	T128-1	10°03'12"	2024.999	37.230	37.230	18.616
T78-1	6°21'20"	653.960	76.540	76.503	36.307	T129-1	10°03'12"	2024.999	37.230	37.230	18.616
T79-1	6°21'20"	653.960	76.540	76.503	36.307	T130-1	10°03'12"	2024.999	37.230	37.230	18.616
T80-1	6°21'20"	653.960	76.540	76.503	36.307	T131-1	10°03'12"	2024.999	37.230	37.230	18.616
T81-1	6°21'20"	653.960	76.540	76.503	36.307	T132-1	10°03'12"	2024.999	37.230	37.230	18.616
T82-1	6°21'20"	653.960	76.540	76.503	36.307	T133-1	10°03'12"	2024.999	37.230	37.230	18.616
T83-1	6°21'20"	653.960	76.540	76.503	36.307	T134-1	10°03'12"	2024.999	37.230	37.230	18.616
T84-1	6°21'20"	653.960	76.540	76.503	36.307	T135-1	10°03'12"	2024.999	37.230	37.230	18.616
T85-1	6°21'20"	653.960	76.540	76.503	36.307	T136-1	10°03'12"	2024.999	37.230	37.230	18.616
T86-1	6°21'20"	653.960	76.540	76.503	36.307	T137-1	10°03'12"	2024.999	37.230	37.230	18.616
T87-1	6°21'20"	653.960	76.540	76.503	36.307	T138-1	10°03'12"	2024.999	37.230	37.230	18.616
T88-1	6°21'20"	653.960	76.540	76.503	36.307	T139-1	10°03'12"	2024.999	37.230	37.230	18.616
T89-1	6°21'20"	653.960	76.540	76.503	36.307	T140-1	10°03'12"	2024.999	37.230	37.230	18.616
T90-1	6°21'20"	653.960	76.540	76.503	36.307	T141-1	10°03'12"	2024.999	37.230	37.230	18.616
T91-1	6°21'20"	653.960	76.540	76.503	36.307	T142-1	10°03'12"	2024.999	37.230	37.230	18.616
T92-1	6°21'20"	653.960	76.540	76.503	36.307	T143-1	10°03'12"	2024.999	37.230	37.230	18.616
T93-1	6°21'20"	653.960	76.540	76.503	36.307	T144-1	10°03'12"	2024.999	37.230	37.230	18.616
T94-1	6°21'20"	653.960	76.540	76.503	36.307	T145-1	10°03'12"	2024.999	37.230	37.230	18.616
T95-1	6°21'20"	653.960	76.540	76.503	36.307	T146-1	10°03'12"	2024.999	37.230	37.230	18.616
T96-1	6°21'20"	653.960	76.540	76.503	36.307	T147-1	10°03'12"	2024.999	37.230	37.230	18.616
T97-1	6°21'20"	653.960	76.540	76.503	36.307	T148-1	10°03'12"	2024.999	37.230	37.230	18.616
T98-1	6°21'20"	653.960	76.540	76.503	36.307	T149-1	10°03'12"	2024.999	37.230	37.230	18.616
T99-1	6°21'20"	653.960	76.540	76.503	36.307	T150-1	10°03'12"	2024.999	37.230	37.230	18.616
T100-1	6°21'20"	653.960	76.540	76.503	36.307	T151-1	10°03'12"	2024.999	37.230	37.230	18.616
T101-1	6°21'20"	653.960	76.540	76.503	36.307	T152-1	10°03'12"	2024.999	37.230	37.230	18.616
T102-1	6°21'20"	653.960	76.540	76.503	36.307	T153-1	10°03'12"	2024.999	37.230	37.230	18.616
T103-1	6°21'20"	653.960	76.540	76.503	36.307	T154-1	10°03'12"	2024.999	37.230	37.230	18.616
T104-1	6°21'20"	653.960	76.540	76.503	36.307	T155-1	10°03'12"	2024.999	37.230	37.230	18.616
T105-1	6°21'20"	653.960	76.540	76.503	36.307	T156-1	10°03'12"	2024.999	37.230	37.230	18.616
T106-1	6°21'20"	653.960	76.540	76.503	36.307	T157-1	10°03'12"	2024.999	37.230	37.230	18.616
T107-1	6°21'20"	653.960	76.540	76.503	36.307	T158-1	10°03'12"	2024.999	37.230	37.230	18.616
T108-1	6°21'20"	653.960	76.540	76.503	36.307	T159-1	10°03'12"	2024.999	37.230	37.230	18.616
T109-1	6°21'20"	653.960	76.540	76.503	36.307	T160-1	10°03'12"	2024.999	37.230	37.230	18.616
T110-1	6°21'20"	653.960	76.540	76.503	36.307	T161-1	10°03'12"	2024.999	37.230	37.230	18.616
T111-1	6°21'20"	653.960	76.540	76.503	36.307	T162-1	10°03'12"	2024.999	3		