

SNOWMEADOWS SUBDIVISION PHASE 2

A PART OF THE NW 1/4 OF SECTION 28, T.14N, R.5E, S.L.B. & M.
GARDEN CITY, RICH COUNTY, UTAH

SURVEYORS CERTIFICATE

I, D. Sorenson, DO HEREBY CERTIFY THAT I AM A REGISTERED LAND SURVEYOR AND THAT I HOLD CERTIFICATE NO. 4783, AS PRESCRIBED UNDER THE LAWS OF THE STATE OF UTAH. I FURTHER CERTIFY THAT BY AUTHORITY OF THE OWNERS, IN ACCORDANCE WITH ACCEPTABLE PROFESSIONAL STANDARDS USING AVAILABLE INFORMATION HAVE CAUSED TO BE MADE, UNDER MY DIRECTION, A SURVEY OF THE TRACT OF LAND SHOWN ON THIS PLAT AND DESCRIBED BELOW AND HAVE SUBDIVIDED SAID TRACT INTO LOTS, AND STREETS, HEREAFTER TO BE KNOWN AS "SNOWMEADOWS SUBDIVISION PHASE 2". THIS TRACT, TO THE BEST OF MY KNOWLEDGE, HAS BEEN CORRECTLY SURVEYED AND STAKED ON THE GROUND AS SHOWN ON THIS PLAT.

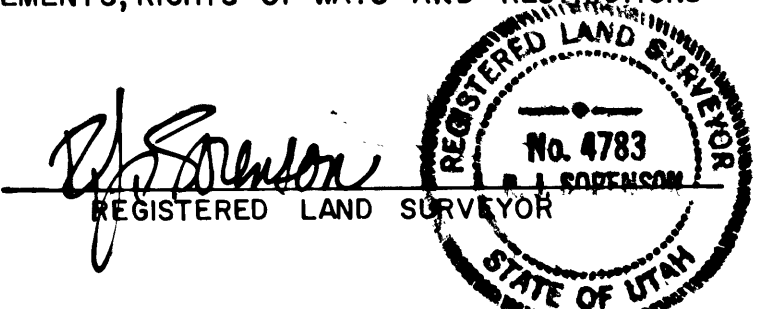
BOUNDARY DESCRIPTION

A TRACT OF LAND LOCATED IN THE NW QUARTER OF SECTION 28, T.14 N., R.5 E., S.L.B. & M., RICH COUNTY, UTAH, DESCRIBED AS FOLLOWS:
BEGINNING AT A POINT WHICH IS N. 0°36'44" E., 185.639 FEET FROM THE WEST 1/4 CORNER OF SECTION 28, T.14 N., R.5 E., S.L.B. & M. AND RUNNING THENCE S. 89°40'34" E., 1006.074 FEET TO THE WEST RIGHT-OF-WAY LINE OF STATE HIGHWAY NO. 30 WHICH IS A POINT ON A 5832.800 FOOT RADIUS CURVE TO THE RIGHT (RADIUS POINT BEARS S. 79°47'39" E.); THENCE NORTHEASTERLY ALONG THE ARC OF SAID CURVE 441.967 FEET (DELTA = 4°20'29"); THENCE N. 89°40'34" W., 346.165 FEET; THENCE N. 0°36'44" E., 36.000 FEET; THENCE N. 89°40'34" W., 749.998 FEET TO THE WEST LINE OF SECTION 28; THENCE S. 0°36'44" W., 468.127 FEET ALONG SAID WEST LINE, MORE OR LESS TO THE POINT OF BEGINNING.

CONTAINING 11.018 ACRES - LOTS

SUBJECT TO ANY AND ALL EASEMENTS, RIGHTS OF WAYS AND RESTRICTIONS OF RECORD.

DATE June 26, 1980



OWNERS DEDICATION

KNOW ALL MEN BY THESE PRESENTS THAT HODGES AND GAMMILL INC., AS ORGANIZED UNDER THE LAWS OF THE STATE OF UTAH & THE UNDERSIGNED OWNER OF THE ABOVE DESCRIBED TRACT OF LAND, HAVING CAUSED TO BE SUBDIVIDED INTO LOTS AND STREETS, HEREAFTER KNOWN AS "SNOWMEADOWS SUBDIVISION PHASE 2", DOES HEREBY DEDICATE FOR PERPETUAL PRIVATE USE SNOWMEADOWS SUBDIVISION HOMEOWNERS ASSOCIATION, ALL PRIVATE STREETS, PRIVATE EASEMENTS AND OPEN SPACE AREAS AS SHOWN HEREON.
IN WITNESS WHEREOF, WE, THE AUTHORIZED OFFICERS OF SAID CORPORATION HEREOF TO SET OUR HANDS THIS 26th DAY OF JULY, A.D., 1980.

James B. Gammill, PRESIDENT
Paul N. Hodges, VICE PRESIDENT
HODGES & GAMMILL, INC.
A UTAH CORPORATION

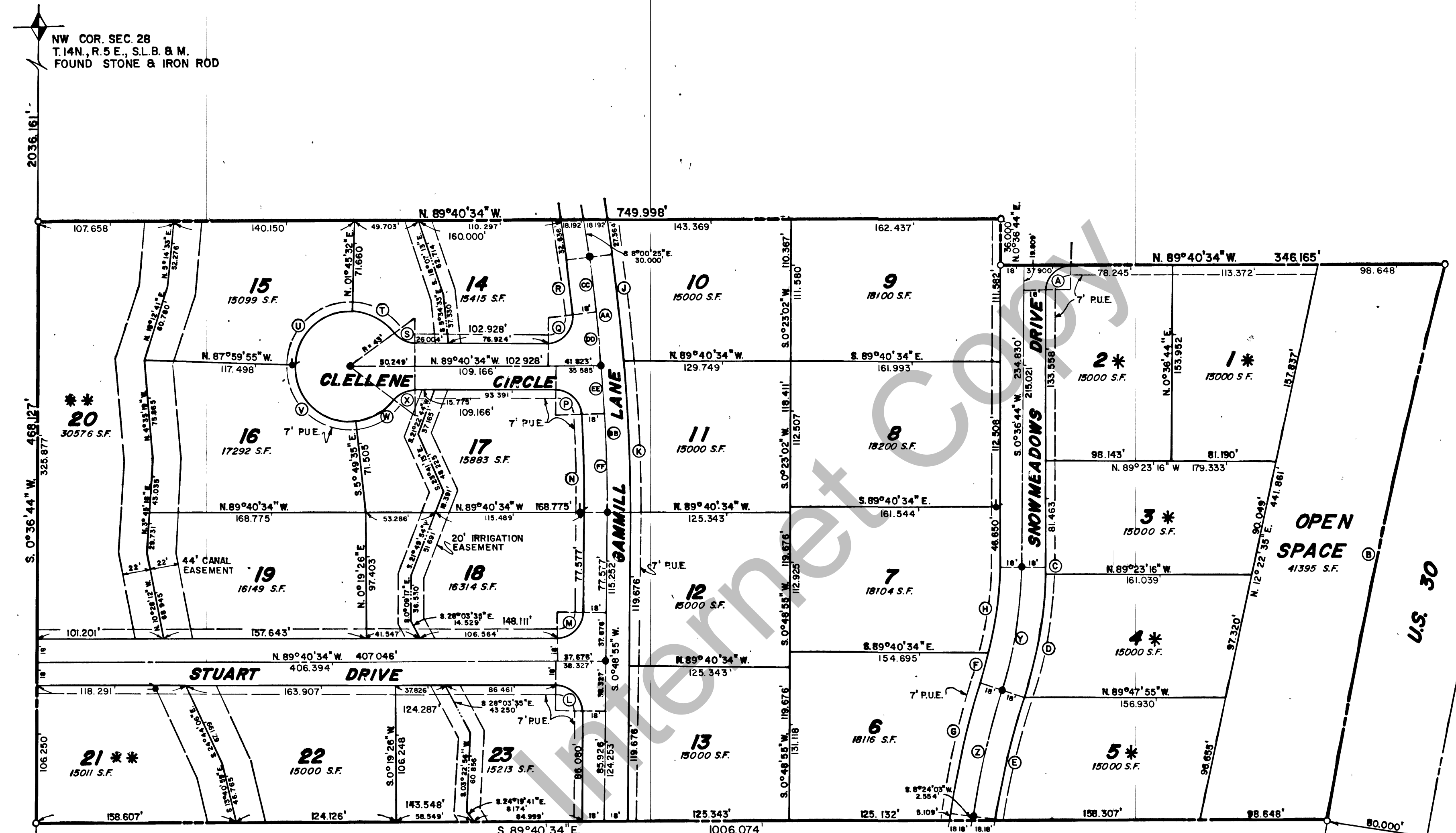
ACKNOWLEDGEMENT

STATE OF UTAH
COUNTY OF CACHE
ON THIS 26th DAY OF JULY, A.D., 1980, PERSONALLY APPEARED BEFORE ME THE UNDERSIGNED NOTARY, JAMES B. GAMMILL & PAUL N. HODGES, WHO BEING DULY SWORN, DID SAY THAT THEY ARE THE PRESIDENT & VICE PRESIDENT OF HODGES AND GAMMILL, INC., AND THAT THE FOREGOING INSTRUMENT WAS SIGNED ON BEHALF OF SAID CORPORATION BY AUTHORITY OF A RESOLUTION OF ITS BOARD OF DIRECTORS, AND THEY ACKNOWLEDGED TO ME THAT SAID CORPORATION DID THE SAME.

MY COMMISSION EXPIRES My Commission Expires Nov. 13, 1982

Jane Davis
NOTARY PUBLIC

RESIDING IN Logan, UT



NOTES:
 * FIRE HYDRANT LOCATIONS
 * IRON ROD TO BE SET WITH SUR-CAP AT 6 TO 8" BELOW GRADE
 * IRON RODS TO BE SET AT ALL LOT AND BOUNDARY CORNERS
 * 7" PUBLIC UTILITIES EASEMENT ALONG ALL FRONT PROPERTY LINES
 * THE FOLLOWING TWO NOTES SHALL APPLY AS INDICATED TO LOTS 1 THRU 5 AND LOTS 20 B 21 UNTIL SUCH TIME AS A REGIONAL SEWERAGE SYSTEM IS CONSTRUCTED OR A FEASIBLE SEWERAGE DISPOSAL SYSTEM IS DEVELOPED WHICH IS ACCEPTABLE AND APPROVED BY THE BEAR RIVER DISTRICT HEALTH DEPARTMENT AND THE UTAH STATE HEALTH DEPARTMENT.
 * LOTS 1 THRU 5 SHALL BE SUBJECT TO INDIVIDUAL PERCOLATION AND SOILS TESTS AND INDIVIDUAL DISPOSAL SYSTEM PLANS WHICH CONFORM TO MINIMUM UTAH STATE REGULATIONS PRIOR TO ISSUANCE OF BUILDING PERMIT.
 * NO SEPTIC SYSTEM ALLOWED OR BUILDING PERMITS TO BE ISSUED.
 ALL LOT OWNERS SHALL COMPLY WITH THE DECLARATION OF RESTRICTIONS, COVENANTS AND CONDITIONS OF RECORD IN ACCORDANCE WITH THE BYLAWS OF THE SNOWMEADOWS HOME OWNERS ASSOCIATION.

CURVE	DELTA	RADIUS	ARC	L.C.	TANGENT
A	89°40'34"	5832.800	31.35	29.210	19.900
B	100°36'44"	441.967	44.186	251.089	1.245
C	100°36'44"	346.165	84.008	87.676	48.337
D	100°36'44"	36.000	24.758	24.758	48.483
E	89°40'34"	346.165	84.008	26.917	15.471
F	89°40'34"	346.165	84.008	26.917	15.471
G	89°40'34"	346.165	84.008	26.917	15.471
H	89°40'34"	346.165	84.008	26.917	15.471
I	89°40'34"	346.165	84.008	26.917	15.471
J	89°40'34"	346.165	84.008	26.917	15.471
K	89°40'34"	346.165	84.008	26.917	15.471
L	89°40'34"	346.165	84.008	26.917	15.471
M	89°40'34"	346.165	84.008	26.917	15.471
N	89°40'34"	346.165	84.008	26.917	15.471
O	89°40'34"	346.165	84.008	26.917	15.471
P	89°40'34"	346.165	84.008	26.917	15.471
Q	89°40'34"	346.165	84.008	26.917	15.471
R	89°40'34"	346.165	84.008	26.917	15.471
S	89°40'34"	346.165	84.008	26.917	15.471
T	89°40'34"	346.165	84.008	26.917	15.471
U	89°40'34"	346.165	84.008	26.917	15.471
V	89°40'34"	346.165	84.008	26.917	15.471
W	89°40'34"	346.165	84.008	26.917	15.471
X	89°40'34"	346.165	84.008	26.917	15.471
Y	89°40'34"	346.165	84.008	26.917	15.471
Z	89°40'34"	346.165	84.008	26.917	15.471
AA	89°40'34"	346.165	84.008	26.917	15.471
BB	89°40'34"	346.165	84.008	26.917	15.471
CC	89°40'34"	346.165	84.008	26.917	15.471
DD	89°40'34"	346.165	84.008	26.917	15.471
EE	89°40'34"	346.165	84.008	26.917	15.471
FF	89°40'34"	346.165	84.008	26.917	15.471

<p>P/S ASSOCIATES, INC. ENGINEERS AND SURVEYORS 307 WEST 200 SOUTH, SUITE 5002 SALT LAKE CITY, UTAH PHONE: (801) 532-7681 P/S JOB NO.</p>	<p>CITY PLANNING COMMISSION APPROVED THIS <u>27</u> DAY OF <u>July</u>, A.D., 19<u>80</u> BY <u>[Signature]</u> CHAIRMAN: CITY PLANNING COMMISSION</p>	<p>BOARD OF HEALTH APPROVED THIS <u>27</u> DAY OF <u>July</u>, A.D., 19<u>80</u> BY <u>[Signature]</u> BEAR RIVER DISTRICT HEALTH DEPARTMENT</p>	<p>CITY ENGINEER I HEREBY CERTIFY THAT THIS OFFICE HAS EXAMINED THIS PLAT AND IT IS CORRECT IN ACCORDANCE WITH INFORMATION ON FILE IN THIS OFFICE. <u>6-26-80 George E. Pattem</u> DATE CITY ENGINEER</p>	<p>APPROVAL AS TO FORM APPROVED AS TO FORM THIS <u>3</u> DAY OF <u>July</u>, A.D. 19<u>80</u> <u>Mark W. Olsen</u> CITY ATTORNEY</p>	<p>TOWN BOARD APPROVAL PRESENTED TO THE BOARD OF TRUSTEES OF GARDEN CITY, UTAH ON THIS <u>26th</u> DAY OF <u>July</u>, A.D., 19<u>80</u> AT WHICH TIME THIS SUBDIVISION WAS APPROVED AND ACCEPTED. <u>[Signatures]</u> ATTEST: CITY CLERK BOARD PRESIDENT</p>	<p>RECORDED STATE OF UTAH, COUNTY OF RICH, RECORDED AND FILED AT THE REQUEST OF <u>Hodges and Gammill, Inc.</u> <u>Entry No. F 22,903</u> DATE <u>8/2/80</u> TIME <u>1:48</u> BOOK <u>03</u> PAGE <u>17</u> <u>[Signature]</u> RICH COUNTY RECORDER</p>
	<p>FEE \$22.50</p>					